



ASHTON

---



two seat lounge



single seat lounge



mobile conference chair / tablet

# ASHTON

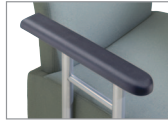
featured options:



arms / upholstered arm cap



wood arm cap



poly arm cap

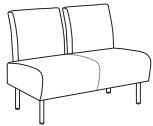


hand grip

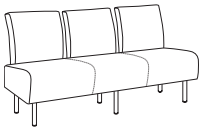
The Ashton is fully upholstered high resiliency foam over a hardwood multi-ply frame with metal legs



single seat lounge  
d 28" w 23" h 33"



two seat lounge  
d 28" w 44" h 33"



three seat lounge  
d 28" w 66" h 33"



mobile conference chair  
d 28" w 23" h 33"



mobile conference chair / tablet  
d 34" w 26" h 33"



conference chair / tablet  
d 34" w 26" h 33"



ottoman  
d 26" w 23" h 18"



mobile conference chair / hand grip option

## We're Green

Our wood products are produced from well managed forests, certified sources of recycled materials and water-based finishes.



Phase I and Phase II compliant. Products are manufactured using water-based adhesives.



ERG furniture contributes to LEED points.



ASHTON BENCH

---



# ASHTON BENCH



Ashton 1-seat bench



Ashton 2-seat bench

## DIMENSIONS

### Ashton 1-Seat Bench

Seat Length	22"
Seat Height	18"
Seat Depth	22"

### Ashton 2-Seat Bench

Seat Length	44"
Seat Height	18"
Seat Depth	22"

### Ashton 3-Seat Bench

Seat Length	66"
Seat Height	18"
Seat Depth	22"

## SPECIFICATIONS

- Origin: ERG Studio
- Frame features a Solid Hardwood/Multi-ply tongue and groove construction
- Seat and back fully upholstered over high resiliency foam
- No-sag springs installed on seats for comfort and durability
- Legs are made of 1 1/2" dia. 14 gauge steel tubing
- Four black polyvinyl gides factory installed
- Legs available in 24 standard powder coat paint colors!
- Coordinate with Ashton Lounge and Ashton Occasional Tables

## OPTIONS

- CA 133 Fire Retardant
- Metallic Chrome Finish
- Casters

## ON THE COVER

Ashton 3-seat bench