



DRAKE TABLE OF CONTENTS

Complete Line - At-A-Glance	2	Drake Training Table Special Shape Pricing	12
Drake Cafe Table Specifications	3	Drake Podium Pricing	13
Drake Cafe Table Finishes & Options	4	Drake Presentation Board Pricing	13
Drake Cafe Table Option Details	5	Drake Center Modesty Panel Pricing	14
Drake Cafe Table Pricing	6	Drake Conference Table Specifications	15
Drake Training Table Specifications	7	Drake Conference Table Finishes & Options	16
Drake Training Table Finishes & Options	8	Drake Conference Table Pricing	17
Drake Training Table Option Details	9	Drake 4-Column Table Specifications	18
New Urethane Edges	10	Drake 4-Column Table Pricing	19
Drake Training Table Pricing	11	Drake Wire Management Pricing	20

CAFE / TRAINING / CONFERENCE



CAFE TABLE WITH OPTIONAL POWER



TRAINING TABLE WITH OPTIONAL FLIP TOP AND CASTERS



INLINE NESTING WITH FLIP TOP AND CASTERS



Y-BASE CONFERENCE TABLE



TT-LEG CONFERENCE TABLE



4-COLUMN TABLE

PODIUM / PRESENTATION BOARD



ECONOMY MOBILE PODIUM



MOBILE PODIUM WITH MODESTY



MOBILE PRESENTATION WHITE BOARD

DRAKE CAFÉ TABLE

Drake offers a comprehensive line of cafe tables designed with the highest performance in mind. With a high-tech look and solid structural build, the Drake is a perfect fit for any dining space. The array of options and bases make Drake our most versatile, stylish and functional line yet!



DRAKE CAFÉ TABLE

ORDERING INFORMATION

- 1) Series Name
- 2) Model Number
- 3) Size
- 4) Quantity
- 5) Powder Coat Frame Color
- 6) Laminate Selection and No.
- 7) Edge Style Code and Color
- 9) Optional Items

DRAKE CAFÉ BASE SPECIFICATIONS

Drake X-Base

Table Height	Table height is 29" to 30" depending on table top specified. Bar Height table is 42".
Column	2.25" diameter 14 gauge steel tubing welded to top plate. Round Column Only.
Base	Diecast aluminum – 20", 26", 32" and 38" X-base spreads.
Plate	9.5" x 9.5" square 12" X 12" square
Glides	Adjustable poly glide with steel trim
Assembly	Top plate is welded to the vertical column and the vertical column is bolted to the horizontal base. No tie rod assembly. Base mounts to tabletop with ¼-20 x 1" machine screws into metal inserts in top.
Finish	Choice of standard powder coat colors – See "Colors & Finishes" brochure.

DRAKE CAFÉ BASE SPECIFICATIONS

Drake T-Leg or C-Leg

Table Height	Table height is 29" to 30" depending on table top specified.
Column	T-Leg: 2.25" dia. round steel tubing welded to top plate. C-Leg: 1.625" x 2.875" oval tubing welded to top plate
Base	Diecast aluminum – 20", 26" spreads
Plate	6" x 8" 12 gauge stamped steel 5" x 5" 12 gauge stamped steel (Flip-Top)
Glides	Adjustable poly glide with steel trim
Assembly	Top plate is welded to the vertical column and the vertical column is bolted to the horizontal feet. No tie rod assembly. Base mounts to tabletop with ¼-20 x 1" machine screws into metal inserts in top. Stretcher steel bars are used on tops 72" and longer.
Finish	Choice of standard powder coat colors – See "Colors & Finishes" brochure

TABLE TOP SPECIFICATIONS

Table Tops

Table top core is CARB Phase I & Phase II Compliant. Laminate, wood veneer and phenolic backing are glued with water based adhesives.

Flip-Top Mechanism

Durable all-steel construction with a spring-loaded release handle and a safety catch to maintain flipped-up position.



DRAKE CAFÉ TABLE
WITH DRAKE POWER
UNIT & COLUMN

FINISHES

Table Bases and Legs

Finished in your choice of standard powder coat colors.

Laminate/Veneer Selections

ERG offers over 1000 standard laminate choices from Nevamar, Wilsonart, Formica and Pionite. Wood veneer is available in transparent stain colors - custom stain matching available.

Edge Selections:

ERG offers a wide variety of table top edge materials including PVC, wood, aluminum and resin. Square tables using PVC **T-MOLD** edge will have a 2" radius on all corners.

OPTIONS

- CODE: FLIP-D - Flip-Top (Drake T-Legs)
- CODE: FLIP-X - Flip-Top per X-base
- CODE: FTCW - Flip-Top Crossbar with Wire Management (Drake)
- CODE: CASD - Locking Casters - Black (Drake)
- CODE: CAS-W - Locking Casters - White
- CODE: DCL - C-Leg instead of T-Leg
- CODE: DOV - Oval Column
- CODE: DPD - Pencil Drawer
- CODE: DPC - Column with Power Plate
- CODE: DPU-A (S or B) - Cove Mini 2-Power in Silver or Black
- CODE: DPU-B (S or B) - Cove Mini 1-Power / 2-USB in Silver or Black
- CODE: CIN - Inline Nesting Legs
- CODE: ASB - Anti-Sag Bar for Tables Under 72"
- CODE: STH - Special Table Height (any table height other than 29" or bar height)
- CODE: ULW - Ultra Lightweight Top
- CODE: RAD - 3" Radius Corners for 3MM Edge
- CODE: FTBH - Flip Top Support Bar For Rectangular Bar Height Tables.
(Maximum table top size 30x72)



X-BASE FLIP TOP MECHANISM



GLIDE DETAIL



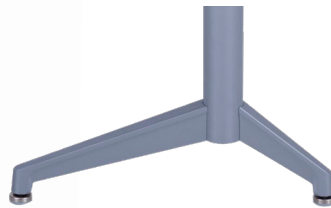
X-BASE FLIP TOP WITH CASTERS



3" LOCKING CASTER - BLACK



3" LOCKING CASTER - WHITE



C-LEG



T-LEG (STANDARD)



1.625" X 2.875" OVAL COLUMN
(T-LEG OR C-LEG ONLY)



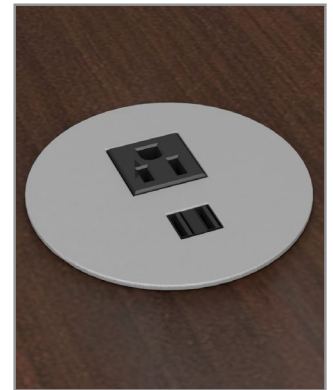
2.25" DIA. ROUND COLUMN
(STANDARD)



DRAKE X-BASE COLUMN WITH POWER PLATE



DPU-AS: COVE MINI ROUND SILVER
(2-POWER OUTLETS)



DPU-BS: COVE MINI ROUND SILVER
(1-POWER / 2-USB OUTLETS)

MODEL / DESCRIPTION / LIST PRICING

DRAKE | CAFÉ | ROUND

Model Number	Table Top Size	Shpg. Wght.	Base Spread	LAMINATE TOP ASSORTED EDGES							VENEER TOP	
				GRP 1	GRP 2	GRP 3	GRP 4	GRP 5	GRP 6	GRP 7	GRP 8	GRP 9
DR30D	30" Dia.	43	26"- X	\$642	\$655	\$749	\$828	\$989	\$1122	\$1282	\$1721	\$1925
DR36D	36" Dia.	53	32"- X	\$716	\$732	\$845	\$942	\$1136	\$1297	\$1490	\$1950	\$2148
DR42D	42" Dia.	72	38"- X	\$882	\$904	\$1051	\$1176	\$1428	\$1638	\$1890	\$2429	\$2648
DR48D	48" Dia.	103	38"- X	\$971	\$996	\$1174	\$1327	\$1632	\$1886	\$2191	\$2725	\$2916

DRAKE | CAFÉ | SQUARE

Model Number	Table Top Size	Shpg. Wght.	Base Spread	LAMINATE TOP ASSORTED EDGES							VENEER TOP	
				GRP 1	GRP 2	GRP 3	GRP 4	GRP 5	GRP 6	GRP 7	GRP 8	GRP 9
DR2430S	24x30 Sq.	49	26"- X	\$619	\$631	\$717	\$790	\$936	\$1058	\$1204	\$1646	\$1856
DR30S	30" Sq.	54	26"- X	\$642	\$655	\$749	\$828	\$989	\$1122	\$1282	\$1721	\$1925
DR36S	36" Sq.	67	32"- X	\$726	\$742	\$859	\$958	\$1158	\$1323	\$1523	\$1982	\$2178
DR42S	42" Sq.	90	38"- X	\$882	\$904	\$1051	\$1176	\$1428	\$1638	\$1890	\$2429	\$2648

DRAKE | CAFÉ | RECTANGLE

Model Number	Table Top Size	Shpg. Wght.	Base Spread	LAMINATE TOP ASSORTED EDGES							VENEER TOP	
				GRP 1	GRP 2	GRP 3	GRP 4	GRP 5	GRP 6	GRP 7	GRP 8	GRP 9
DR2448	24x48 Sq.	70	2-20"- T	\$722	\$737	\$847	\$942	\$1130	\$1287	\$1476	\$1952	\$2164
DR2460	24x60 Sq.	79	2-20"- T	\$759	\$776	\$899	\$1005	\$1215	\$1391	\$1602	\$2076	\$2277
DR3048	30x48 Sq.	79	2-26"- T	\$763	\$780	\$905	\$1012	\$1225	\$1403	\$1616	\$2091	\$2289
DR3060	30x60 Sq.	90	2-26"- T	\$808	\$828	\$968	\$1088	\$1329	\$1529	\$1769	\$2242	\$2425

DRAKE | CAFÉ | BAR HEIGHT | ROUND/SQUARE

Model Number	Table Top Size	Shpg. Wght.	Base Spread	LAMINATE TOP ASSORTED EDGES							VENEER TOP	
				GRP 1	GRP 2	GRP 3	GRP 4	GRP 5	GRP 6	GRP 7	GRP 8	GRP 9
DRH24D	24" Dia.	40	20"- X	\$724	\$734	\$804	\$864	\$985	\$1086	\$1207	\$1825	\$2165
DRH30D	30" Dia.	50	26"- X	\$788	\$801	\$895	\$974	\$1135	\$1268	\$1428	\$2044	\$2361
DRH36D	36" Dia.	63	32"- X	\$863	\$879	\$992	\$1089	\$1282	\$1443	\$1637	\$2273	\$2585
DRH30S	30" Sq.	54	32"- X	\$829	\$844	\$943	\$1028	\$1198	\$1340	\$1510	\$2155	\$2486
DRH36S	36" Sq.	67	32"- X	\$898	\$915	\$1031	\$1130	\$1330	\$1495	\$1695	\$2361	\$2691

OPTIONS

Add upcharge to list price and code to model number

FLIP-X	X-Base Flip-Top	\$125
FLIP-D	T-Leg Flip Top (Drake) - 2 T-Legs	\$340
CASD	Casters - Black (Drake)	\$20 each
CAS-W	Casters - White	\$30 each
DCL	C-Leg instead of T-Leg	\$60 per table
DOV	Oval Column (C- or T-Leg Only)*	\$48 per table
DPC	Column with Power Plate	\$160 per base
DPU-AB	Cove Mini 2-Power Black (COV-SM-R-2-B-108)	\$320
DPU-AS	Cove Mini 2-Power Silver (COV-SM-R-2-S-108)	\$320
DPU-BB	Cove Mini Power/USB Black (COV-SM-R-1U-B-108)	\$453

DPU-BS	Cove Mini Power/USB Silver (COV-SM-R-1U-S-108)	\$453
CIN	Inline Nesting Legs	\$65 per table
ASB	Anti-Sag Bar for Tables Under 72"	\$80
STH	Special Table Height (other than 29")	\$150 per base
GD	Ganging per table	\$95
ULW	Ultra Lightweight Top	\$190
RAD	3" Radius Corners for 3MM Edge	\$200 per table
FTBH	All T-base bar height tables with flip top	\$300
FTCW	Flip Top Crossbar wth Wire Management	\$75

Note: FTBH option is required with STH option when ordering rectangle flip-top tables over 29" table height.

DRAKE TRAINING TABLE

Drake offers a comprehensive line of training tables designed with the highest performance in mind. With a high-tech look and solid structural build, the Drake is a perfect fit for any training space. The array of options available make Drake our most versatile, stylish and functional line yet!



DRAKE TRAINING TABLE WITH WHITE CASTERS AND FLIP-TOP

ORDERING INFORMATION

- | | |
|----------------------------|---|
| 1) Series Name | 6) Laminate Selection and No. |
| 2) Model Number | 7) Edge Style Code and Color |
| 3) Size | 8) Center Panel Laminate
(Teacher Desk/Podium Modesty) |
| 4) Quantity | 9) Optional Items |
| 5) Powder Coat Frame Color | |

DRAKE TRAINING BASE SPECIFICATIONS

Drake T Base

- | | |
|---------------------|---|
| Table Height | Table height is 29" to 30" depending on table top specified. |
| Column | 2.25" diameter 14 gauge steel tubing welded to top plate. |
| Base | Diecast aluminum tubing – 14", 20", 26" and 32" spreads |
| Plate | 6" x 8" square 12 gauge stamped steel
5" x 5" 12 gauge stamped steel (Flip-Top) |
| Glides | Adjustable poly glide with steel trim |
| Assembly | Top plate is welded to the vertical column and the vertical column is bolted to the feet. No tie rod assembly. Base mounts to tabletop with ¼-20 x 1" machine screws into metal inserts in top. Stretcher steel bars are used on tops 72" and longer. |
| Finish | Choice of standard powder coat colors – See "Colors & Finishes" brochure |

TABLE TOP SPECIFICATIONS

Table Tops

Table top core is CARB Phase I & Phase II Compliant. Laminate, wood veneer and phenolic backing are glued with water based adhesives.

Ultra-Lightweight Table Tops

Ultra-lightweight tables have an exceptionally strong manufactured MDF top made from 100% recovered and recycled wood fiber with at least 25% post-industrial recycled fiber; the balance consisting of recovered waste fiber. Ultra-light tables are 18% lighter than standard tables.

Flip-Top Mechanism

Aluminum die-cast top plate and aluminum housing with single handle cable release.



HEXAGON CLASSROOM TABLE
WITH BRIO FLIP CHAIRS

- TABLE ACCESSORIES – Modesty Panels, Bridges, Grommets, Wire Management, Power & Communication Options, Table Dollies – See accessories online under 'Products' tab.



DRAKE TRAINING TABLE
WITH KNIFE-EDGE TOP

FINISHES

Table Bases and Legs

Finished in your choice of standard powder coat colors. Finishes listed at beginning of price list. For colors refer to "Colors & Finishes" brochure. For actual color samples, please call Customer Service.

Laminate/Veneer Selections

ERG offers over 1000 standard laminate choices from Nevamar, Wilsonart, Formica and Pionite. Wood veneer is available in transparent stain colors - custom stain matching available.

Edge Selections:

ERG offers a wide variety of table top edge materials including PVC, wood, aluminum and resin/urethane.

Special Edge Note: When ganging or butting tables together, ERG recommends using 3MM flat edge or flat wood edge. Square tables using PVC **T-MOLD** edge will have a 2" radius on all corners.



GLIDE DETAIL

OPTIONS

- CODE: FLIP-D - Flip-Top (Drake)
- CODE: FTCW - Flip-Top Crossbar with Wire Management (Drake)
- CODE: ASB - Anti-Sag bar for Tables Under 72"
- CODE: STH - Special Table Height (any table height other than 29")
- CODE: ULW - Ultra-lightweight table top
- CODE: CASD - 3" Locking Casters - Black
- CODE: CAS-W - 3" Locking Casters - White
- CODE: DCL - C-Leg instead of T-Leg
- CODE: DOV - Oval Column
- CODE: DPD - Pencil Drawer
- CODE: GD - Ganging per table
- CODE: CIN - Inline Nesting
- CODE: RAD - 3" Radius Corners for 3MM Edge
- CODE: FTBH - Flip top support bar for rectangular bar height tables.
(Maximum table top size 30x72)
- TABLE ACCESSORIES - Modesty Panels, Bridges, Grommets, Wire Management, Power & Communication Options, Table Dollies - See accessories online under 'Products' tab.

Note: When ordering standard modesty panel, table and panel must have 3MM edge.



FLIP TOP



EASY INLINE NESTING



3" LOCKING CASTER - BLACK



3" LOCKING CASTER - WHITE



C-LEG



T-LEG (STANDARD)



1.625" X 2.875" OVAL COLUMN

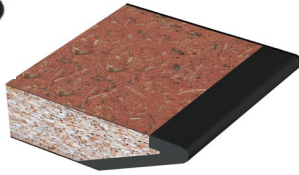


2.25" DIA. ROUND COLUMN
(STANDARD)

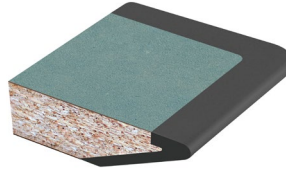


PENCIL DRAWER

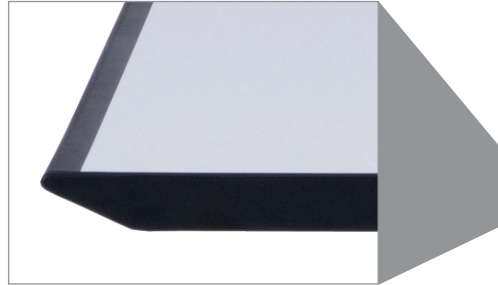
NEW URETHANE KNIFE EDGES



EDGE 6-K
SINGLE EDGE: URETHANE KNIFE
REMAINING THREE EDGES: 3MM PVC



EDGE 6-M
ALL FOUR EDGES: URETHANE KNIFE



EDGE 6-K DETAIL



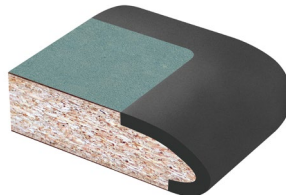
DRAKE C-LEG TRAINING TABLE
WITH URETHANE KNIFE EDGE 6-K



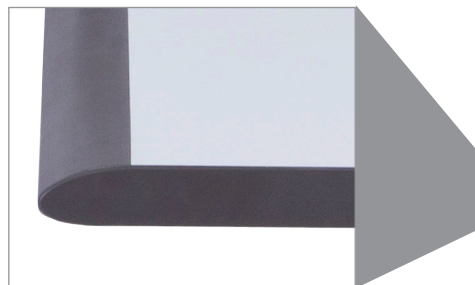
NEW URETHANE COMFORT EDGES



EDGE 6-L
SINGLE EDGE: URETHANE COMFORT
REMAINING THREE EDGES: 3MM PVC



EDGE 6-N
ALL FOUR EDGES: URETHANE COMFORT



EDGE 6-L DETAIL



DRAKE T-LEG TRAINING TABLE WITH
URETHANE COMFORT EDGE 6-L



MODEL / DESCRIPTION / LIST PRICING

DRAKE | RECTANGLE

Model Number	Table Top Size	Shpg. Wght.	Base Spread	LAMINATE TOP ASSORTED EDGES								VENEER TOP	
				GRP 1	GRP 2	GRP 3	GRP 4	GRP 5	GRP 6	GRP 7	GRP 8	GRP 9	
DR1836	18 X 36	54	2-14"- T	\$634	\$645	\$725	\$792	\$929	\$1042	\$1178	\$1658	\$1900	
DR1848	18 X 48	61	2-14"- T	\$664	\$676	\$766	\$843	\$996	\$1124	\$1277	\$1756	\$1988	
DR1860	18 X 60	68	2-14"- T	\$693	\$707	\$807	\$893	\$1064	\$1207	\$1378	\$1855	\$2078	
DR1872	18 X 72	75	2-14"- T	\$814	\$829	\$940	\$1034	\$1223	\$1380	\$1570	\$2155	\$2438	
DR1884	18 X 84	81	2-14"- T	\$862	\$881	\$1007	\$1116	\$1334	\$1516	\$1734	\$2318	\$2585	
DR1896	18 X 96	88	2-14"- T	\$892	\$911	\$1049	\$1166	\$1402	\$1599	\$1834	\$2418	\$2675	
DR2436	24 X 36	61	2-20"- T	\$685	\$699	\$796	\$879	\$1044	\$1183	\$1349	\$1827	\$2051	
DR2448	24 X 48	70	2-20"- T	\$722	\$737	\$847	\$942	\$1130	\$1287	\$1476	\$1952	\$2164	
DR2460	24 X 60	79	2-20"- T	\$759	\$776	\$899	\$1005	\$1215	\$1391	\$1602	\$2076	\$2277	
DR2472	24 X 72	88	2-20"- T	\$887	\$907	\$1043	\$1160	\$1393	\$1587	\$1820	\$2403	\$2662	
DR2484	24 X 84	97	2-20"- T	\$944	\$966	\$1122	\$1256	\$1522	\$1744	\$2011	\$2592	\$2832	
DR2496	24 X 96	106	2-20"- T	\$981	\$1005	\$1174	\$1319	\$1608	\$1849	\$2137	\$2717	\$2944	
DR3036	30 X 36	68	2-26"- T	\$718	\$734	\$843	\$935	\$1122	\$1277	\$1463	\$1940	\$2153	
DR3048	30 X 48	79	2-26"- T	\$763	\$780	\$905	\$1012	\$1225	\$1403	\$1616	\$2091	\$2289	
DR3060	30 X 60	90	2-26"- T	\$808	\$828	\$968	\$1088	\$1329	\$1529	\$1769	\$2242	\$2425	
DR3072	30 X 72	102	2-26"- T	\$944	\$967	\$1123	\$1257	\$1524	\$1746	\$2013	\$2594	\$2834	
DR3084	30 X 84	113	2-26"- T	\$1008	\$1034	\$1212	\$1366	\$1671	\$1926	\$2231	\$2810	\$3028	
DR3096	30 X 96	124	2-26"- T	\$1054	\$1081	\$1275	\$1442	\$1775	\$2051	\$2385	\$2962	\$3164	
DR3648	36 X 48	88	2-32"- T	\$814	\$834	\$977	\$1099	\$1342	\$1546	\$1790	\$2262	\$2444	
DR3660	36 X 60	102	2-32"- T	\$867	\$889	\$1051	\$1188	\$1464	\$1693	\$1969	\$2439	\$2603	
DR3672	36 X 72	115	2-32"- T	\$1012	\$1037	\$1215	\$1369	\$1676	\$1933	\$2240	\$2818	\$3036	
DR3684	36 X 84	129	2-32"- T	\$1083	\$1112	\$1317	\$1491	\$1842	\$2134	\$2484	\$3060	\$3253	
DR3696	36 X 96	142	2-32"- T	\$1136	\$1167	\$1391	\$1582	\$1963	\$2281	\$2664	\$3237	\$3413	

TABLE ACCESSORIES – Modesty Panels, Bridges, Grommets, Wire Management, Power & Data Options, Table Dollies
– see Table Accessories online:

http://www.erginternational.com/training_table_accessories.php

OPTIONS

Add upcharge to list price and code to model number

FLIP-D	T-Leg Flip Top (Drake)	\$340 per table
CASD	Locking Casters - Black (Drake)	\$20 each
CAS-W	Locking Casters - White	\$30 each
DCL	C-Leg instead of T-Leg	\$60 per table
DOV	Oval Column (C- or T-Leg Only)*	\$48 per table
DPD	Pencil Drawer	\$310
CIN	Inline Nesting Legs	\$65 per table

ASB	Anti-Sag bar for Tables Under 72"	\$80
STH	Special Table Height (other than 29")	\$150 per leg
GD	Ganging per table	\$95
ULW	Ultra Lightweight Top	\$190
RAD	3" Radius Corners for 3MM Edge	\$200 per table
FTBH	All T-base bar height tables with flip top	\$300
FTCW	Flip Top Crossbar wth Wire Management	\$75

Note: FTBH option is required with STH option when ordering rectangle flip-top tables over 29" table height.

MODEL / DESCRIPTION / LIST PRICING

DRAKE | TRAPEZOID



TRAPEZOID



LEG
PLACEMENT

Model Number	Table Top Size	Shpg. Wght.	Base Spread	LAMINATE TOP ASSORTED EDGES							VENEER TOP	
				GRP 1	GRP 2	GRP 3	GRP 4	GRP 5	GRP 6	GRP 7	GRP 8	GRP 9
DRT2448	24 X 48	70	2-20"- T	\$851	\$873	\$1029	\$1162	\$1428	\$1649	\$1916	\$2387	\$2556
DRT2460	24 X 60	79	2-20"- T	\$932	\$958	\$1141	\$1298	\$1612	\$1875	\$2189	\$2657	\$2799
DRT3060	30 X 60	90	2-26"- T	\$973	\$1002	\$1200	\$1369	\$1709	\$1993	\$2332	\$2798	\$2926
DRT3672	36 X 72	115	2-26"- T	\$1170	\$1202	\$1438	\$1638	\$2040	\$2376	\$2777	\$3350	\$3514

DRAKE | SECTIONAL | HALF ROUND



HALF ROUND



LEG
PLACEMENT

Model Number	Table Top Size	Shpg. Wght.	Base Spread	LAMINATE TOP ASSORTED EDGES							VENEER TOP	
				GRP 1	GRP 2	GRP 3	GRP 4	GRP 5	GRP 6	GRP 7	GRP 8	GRP 9
DRHR2448	24 X 48	70	2-20"- T	\$966	\$994	\$1189	\$1357	\$1693	\$1972	\$2308	\$2774	\$2904
DRHR3060	30 X 60	90	2-20"- T	\$1045	\$1077	\$1300	\$1492	\$1875	\$2193	\$2576	\$3040	\$3144
DRHR3672	36 X 72	115	2-26"- T	\$1242	\$1279	\$1538	\$1760	\$2206	\$2577	\$3023	\$3592	\$3731

DRAKE | COMMUNITY TABLE - 6-SIDED w/3 C-LEGS



HEXAGON



LEG
PLACEMENT

Model Number	Table Top Size	Shpg. Wght.	Base Spread	LAMINATE TOP ASSORTED EDGES							VENEER TOP	
				GRP 1	GRP 2	GRP 3	GRP 4	GRP 5	GRP 6	GRP 7	GRP 8	GRP 9
DR6S	54 x 60	148	3-20"- C	\$1855	\$1887	\$2109	\$2301	\$2682	\$3001	\$3383	\$4819	\$5556



6-SIDED CLASSROOM TABLE
WITH 3 C-LEGS

OPTIONS

Add upcharge to list price and code to model number

FLIP-D	T-Leg Flip Top (Drake)	\$340 per table
CASD	Locking Casters - Black (Drake)	\$20 each
CAS-W	Locking Casters - White	\$30 each
DCL	C-Leg instead of T-Leg	\$60 per table
DOV	Oval Column (C- or T-Leg Only)*	\$48 per table
DPD	Pencil Drawer	\$310
CIN	Inline Nesting Legs	\$65 per table

ASB	Anti-Sag Bar for tables under 72"	\$80
STH	Special Table Height (other than 29")	\$150 per leg
GD	Ganging per table	\$95
ULW	Ultra Lightweight Top	\$190
RAD	3" Radius Corners for 3MM Edge	\$200 per table
FTBH	All T-base bar height tables with flip top	\$300
FTCW	Flip Top Crossbar wth Wire Management	\$75

Note: FTBH option is required with STH option when ordering rectangle flip-top tables over 29" table height.

MODEL / DESCRIPTION / LIST PRICING

DRAKE | INSET MODESTY PANELS
(Requires oval column option - DOV)

TEACHER DESK COMBO CONSISTS OF A STANDARD T-LEG OR C-LEG TABLE WITH 1.25" TOP. TO INCLUDE THE CENTER MODESTY PANEL, THE OPTIONAL OVAL COLUMN MUST BE ORDERED FOR THE LEGS. TO SPECIFY, PLEASE SPECIFY THE FOLLOWING WHEN ORDERING:

- TOP LAMINATE
- 3MM EDGE COLOR
- MODESTY LAMINATE (FRONT/BACK)
- POWDER COAT FRAME FINISH



Model Number	Table Top Size	LIST PRICE
		DMP36
DMP42	42" width top	\$275
DMP48	48" width top	\$328
DMP60	60" width top	\$353
DMP72	72" width top	\$402
DMP84	84" width top	\$471
DMP96	96" width top	\$487

Note: For standard modesty panel pricing, please see the modesty panel pricing under accessories.

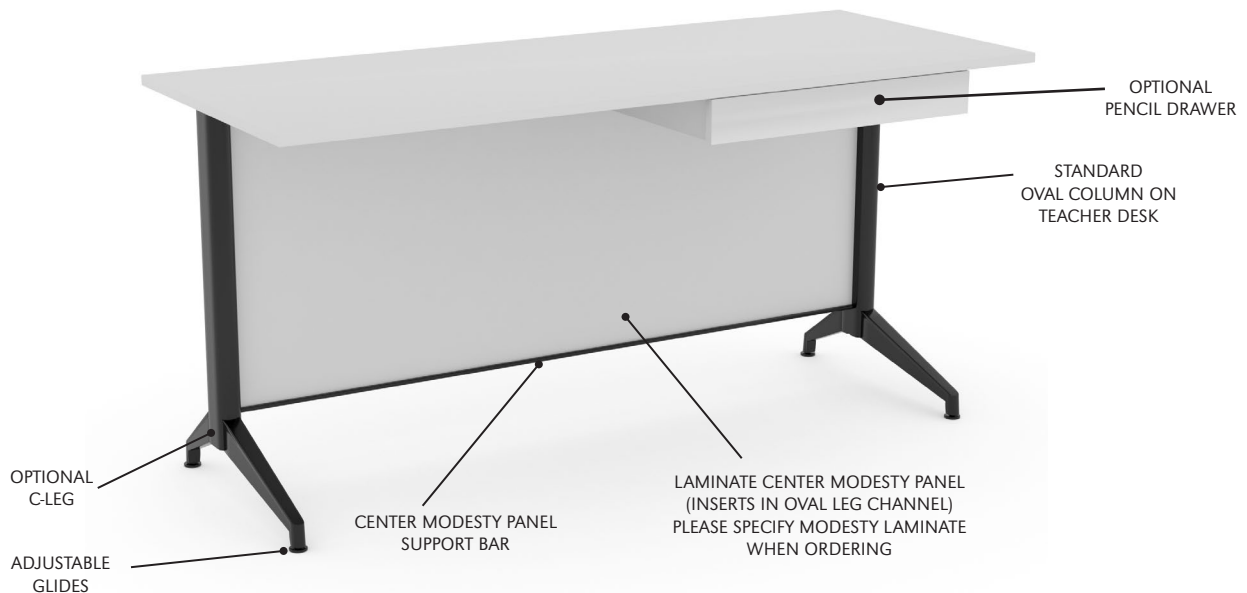
DRAKE | PENCIL DRAWER
DPD Optional Pencil Drawer

OPTIONAL PENCIL DRAWER CAN BE PLACED RIGHT, LEFT OR CENTER OF DESK. PLEASE SPECIFY LAMINATE AND PLACEMENT WHEN ORDERING.



DIMENSIONS	OVERALL	LIST
Drawer Width:	22"	\$310
Drawer Height:	3.25"	
Drawer Depth:	16"	

Note: Teacher Desk is shipped K-D with assembly instructions.



MODEL / DESCRIPTION / LIST PRICING



ANGLED TOP PROFILE

DRPDS Economy Podium \$1150 list

- Includes Black Casters
- Standard Round Column
- Angled 3/4" Top with 3MM PVC Edge (2-B)

PLEASE SPECIFY THE FOLLOWING WHEN ORDERING:

- TOP LAMINATE
- 3MM EDGE COLOR
- POWDER COAT BASE FINISH

DIMENSIONS	Overall
X-Base Spread:	23" x 23"
Overall Depth:	24"
Overall Width:	28"
Overall Height:	44"
Table Depth:	18"
Table Width:	28"
Table Height (Front):	39"



PODIUM WITH
OPTIONAL WHITE
LOCKING CASTERS

DRPD Podium - Standard \$1619 list

- Includes Whiteboard Modesty and Black Casters
- Standard with Oval Column
- 3/4" White Laminate Top with 3MM PVC Edge (2-B)

DRPD-L Podium - Optional Laminate Choice \$1935 list

- Your Modesty Material Selection and Black Casters
- Standard with Oval Column
- 3/4" Laminate Top (your choice) with 3MM PVC Edge (2-B)

PLEASE SPECIFY THE FOLLOWING WHEN ORDERING PODIUM:

- TOP LAMINATE
- 3MM EDGE COLOR
- MODESTY LAMINATES (FRONT/BACK)
- POWDER COAT BASE FINISH

DIMENSIONS	Overall
Base Spread:	22.5"
Overall Width:	28"
Overall Height:	38"
Table Depth:	18"
Table Width:	28"
Table Height:	38"



PRESENTATION BOARD
WITH OPTIONAL WHITE
LOCKING CASTERS

DRWB White Board Presentation Stand \$2692 list

- Standard with Oval Column and Black Casters
- Standard with Whiteboard (Front/Back)

PLEASE SPECIFY THE FOLLOWING WHEN ORDERING:

- POWDER COAT BASE FINISH

DIMENSIONS	Overall
Base Spread:	27"
Overall Width:	45"
Overall Height:	77"
Whiteboard Width:	42"
Whiteboard Height:	47"

OPTIONS

Add upcharge to list price and code to model number

CAS-W	Locking Casters (White)	\$10 each
-------	-------------------------	-----------

DRAKE CONFERENCE TABLE

Drake conference tables are designed with the highest performance in mind. With a high-tech look and solid structural build, the Drake is a perfect fit for any meeting space.



CONFERENCE TABLE WITH Y-BASE AND OPTIONAL OVAL TOP

Note: Y-leg base pricing includes floor crossbar.

ORDER INFORMATION

- 1) Series Name
- 2) Model Number
- 3) Size
- 4) Quantity
- 5) Powder Coat Frame Color
- 6) Laminate Selection and No.
- 7) Edge Style Code and Color
- 8) Optional Items

DRAKE CONFERENCE SPECIFICATIONS

Conference Base

- Table Height** Table height is 29" to 30" depending on table top specified.
- Column** 2.25" diameter 14 gauge steel tubing welded to top plate.
- Base** Diecast aluminum – 36" and 47" TT-Legs and 28" and 34" Y-Base
- Plate** Y-Base: 12" x 12" square 12 gauge stamped steel
TT-Base: (2)6" x 8" 12 gauge stamped steel
- Glides** Adjustable poly glide with steel trim
- Assembly** Top plate is welded to the vertical column and the vertical column is bolted to the horizontal base and crossbar (on Y-base).
No tie rod assembly. Base mounts to tabletop with 1/4-20 x 1" machine screws into metal inserts in top. Stretcher steel bars are used on tops 72" and longer.
- Finish** Choice of standard powder coat colors – See "Colors & Finishes" brochure

Table Tops

Table top core is CARB Phase I & Phase II Compliant. Laminate, wood veneer and phenolic backing are glued with water based adhesives.

Edge Selections

ERG offers a wide variety of table top edge materials including PVC, wood and laminate.



CONFERENCE TABLE WITH
TT-LEGS

FINISHES

Table Bases and Legs

Finished in your choice of standard powder coat colors. Finishes listed at beginning of price list. For colors refer to "Colors & Finishes" brochure. For actual color samples, please call Customer Service.

Laminate/Veneer Selections

ERG offers over 1000 standard laminate choices from Nevamar, Wilsonart, Formica and Pionite. Wood veneer is available in transparent stain colors - custom stain matching available.

OPTIONS

- CODE: STH - Special Table Height (any table height other than 29")
- CODE: GD - Ganging per table
- CODE: CRT - Racetrack table top
- CODE: COT - Oval table top
- CODE: CBT - Boat table top
- CODE: CAT - Almost Rectangle table top
- CODE: RAD - 3" Radius Corners for 3MM Edge
- TABLE ACCESSORIES - Modesty Panels, Bridges, Grommets, Wire Management, Power & Communication Options, Table Dollies - See accessories online under 'Products' tab.

OPTIONAL CONFERENCE TABLE SHAPES



RACETRACK TOP
CODE: CRT



OVAL TOP
CODE: COT



BOAT TOP
CODE: CBT



ALMOST RECTANGLE TOP
CODE: CAT

Note: Base Spreads may differ on Racetrack and Oval tops - please call factory for detailed specifications.

MODEL / DESCRIPTION / LIST PRICING

DRAKE | CONFERENCE | RECTANGLE TT-BASE

RECTANGLE

Model Number	Table Top Size	Shpg. Wght.	Base Spread	LAMINATE TOP ASSORTED EDGES								VENEER TOP	
				GRP 1	GRP 2	GRP 3	GRP 4	GRP 5	GRP 6	GRP 7	GRP 8	GRP 9	
DR4272	42 X 72	129	2-36TT	\$2024	\$2068	\$2370	\$2629	\$3148	\$3580	\$4097	\$5457	\$6071	
DR4284	42 X 84	144	2-36TT	\$2109	\$2155	\$2479	\$2757	\$3310	\$3772	\$4327	\$5713	\$6325	
DR4296	42 X 96	160	2-36TT	\$2169	\$2219	\$2564	\$2859	\$3450	\$3943	\$4533	\$5915	\$6508	
DR4872	48 X 72	142	2-36TT	\$2074	\$2120	\$2439	\$2714	\$3262	\$3719	\$4267	\$5623	\$6222	
DR4884	48 X 84	160	2-36TT	\$2311	\$2360	\$2703	\$2998	\$3587	\$4078	\$4667	\$6222	\$6928	
DR4896	48 X 96	178	2-36TT	\$2378	\$2432	\$2799	\$3114	\$3744	\$4270	\$4900	\$6452	\$7135	
DR48108*	48 X 108	196	3-36TT	\$2543	\$2599	\$2991	\$3327	\$3997	\$4556	\$5228	\$6892	\$7628	
DR48120*	48 X 120	214	3-36TT	\$2612	\$2671	\$3086	\$3442	\$4155	\$4748	\$5460	\$7122	\$7834	
DR48144*	48 X 144	250	3-36TT	\$3084	\$3150	\$3613	\$4010	\$4805	\$5466	\$6261	\$8320	\$9248	
DR6096	60 X 96	214	2-47TT	\$2701	\$2760	\$3174	\$3528	\$4237	\$4828	\$5536	\$7313	\$8102	
DR60108*	60 X 108	237	3-47TT	\$2833	\$2896	\$3340	\$3719	\$4478	\$5110	\$5870	\$7701	\$8499	
DR60120*	60 X 120	259	3-47TT	\$2989	\$3056	\$3528	\$3934	\$4743	\$5417	\$6226	\$8141	\$8967	
DR60144*	60 X 144	304	3-47TT	\$3612	\$3689	\$4219	\$4674	\$5584	\$6343	\$7253	\$9708	\$10832	

* Asterisk after model number indicates 2 piece tops with center seam for tables over 96" and longer

DRAKE | CONFERENCE | RECTANGLE Y-BASE

RECTANGLE

Model Number	Table Top Size	Shpg. Wght.	Base Spread	LAMINATE TOP ASSORTED EDGES								VENEER TOP	
				GRP 1	GRP 2	GRP 3	GRP 4	GRP 5	GRP 6	GRP 7	GRP 8	GRP 9	
DRY3672	36 X 72	115	2-28Y	\$1529	\$1554	\$1733	\$1887	\$2194	\$2450	\$2758	\$3957	\$4578	
DRY3684	36 X 84	129	2-28Y	\$1601	\$1630	\$1834	\$2009	\$2360	\$2652	\$3002	\$4199	\$4796	
DRY3696	36 X 96	142	2-28Y	\$1654	\$1685	\$1909	\$2099	\$2481	\$2799	\$3182	\$4376	\$4955	
DRY4272	42 X 72	129	2-34Y	\$2130	\$2173	\$2475	\$2735	\$3253	\$3685	\$4203	\$5688	\$6385	
DRY4284	42 X 84	144	2-34Y	\$2191	\$2237	\$2560	\$2837	\$3392	\$3854	\$4409	\$5891	\$6568	
DRY4296	42 X 96	160	2-34Y	\$2251	\$2300	\$2645	\$2941	\$3532	\$4024	\$4615	\$6095	\$6751	
DRY4872	48 X 72	142	2-34Y	\$2180	\$2226	\$2545	\$2820	\$3367	\$3825	\$4372	\$5855	\$6536	
DRY4884	48 X 84	160	2-34Y	\$2417	\$2466	\$2809	\$3103	\$3693	\$4183	\$4773	\$6454	\$7243	
DRY4896	48 X 96	178	2-34Y	\$2484	\$2536	\$2905	\$3220	\$3850	\$4375	\$5005	\$6684	\$7449	

Note: Y-leg base pricing includes floor crossbar.

OPTIONS

Add upcharge to list price and code to model number

GD	Ganging per table	\$95
CRT	Racetrack table top	add 20%
COT	Oval table top	add 20%
CBT	Boat table top	add 25%

CAT	Almost Rectangle table top	add 25%
STH	Special Table Height - any height other than 29"	\$350
RAD	3" Radius Corners for 3MM Edge	\$200 per table

Note: Base Spreads may differ on Racetrack and Oval tops - please call factory for detailed specifications.



DRAKE 4-COLUMN BASE

ORDERING INFORMATION

- | | |
|----------------------------|-------------------------------|
| 1) Series Name | 6) Laminate Selection and No. |
| 2) Model Number | 7) Edge Style Code and Color |
| 3) Size | 9) Optional Items |
| 4) Quantity | |
| 5) Powder Coat Frame Color | |

TABLE TOP SPECIFICATIONS

Table Tops

Table top core is CARB Phase I & Phase II Compliant. Laminate, wood veneer and phenolic backing are glued with water based adhesives.

DRAKE CAFÉ BASE SPECIFICATIONS

Drake 4-Column Base

Table Height	Table height is 29" to 30" depending on table top specified.
Columns	2.25" round 14 gauge steel tubing.
Base	Diecast aluminum – 48" and 54" base spreads.
Plate	6" x 6" square per column
Glides	Adjustable poly glide with steel trim
Assembly	Top plate is welded to the vertical columns and the vertical columns are bolted to the horizontal foot. No tie rod assembly. Base mounts to tabletop with ¼-20 x 1" machine screws into metal inserts in top.
Finish	Choice of standard powder coat colors – See "Color Selections" brochure.

FINISHES

Table Bases and Legs

Finished in your choice of standard powder coat colors. Finishes listed at beginning of price list. For colors refer to "Colors & Finishes" brochure. For actual color samples, please call Customer Service.

Laminate/Veneer Selections

ERG offers over 1000 standard laminate choices from Nevamar, Wilsonart, Formica and Pionite. Wood veneer is available in transparent stain colors - custom stain matching available.

Edge Selections:

ERG offers a wide variety of table top edge materials including PVC, wood, aluminum and resin/urethane.
Special Edge Note: When ganging or butting tables together, ERG recommends using 3MM flat edge or flat wood edge. Square tables using PVC **T-MOLD** edge will have a 2" radius on all corners.

OPTIONS

- CODE: STH - Special Table Height (any table height other than 29")
- CODE: ULW - Ultra Lightweight Top
- CODE: RAD - 3" Radius Corners for 3MM Edge

MODEL / DESCRIPTION / LIST PRICING

DRAKE | 4 COLUMN | ROUND | FIXED/STATIONARY BASE



Model Number	Table Top Size	Shpg. Wght.	Base Spread	LAMINATE TOP ASSORTED EDGES							VENEER TOP	
				GRP 1	GRP 2	GRP 3	GRP 4	GRP 5	GRP 6	GRP 7	GRP 8	GRP 9
DR54D*	54" Dia.	101	48"-4COL	\$1655	\$1685	\$1897	\$2079	\$2441	\$2744	\$3105	\$4343	\$4958
DR60D*	60" Dia.	118	48"-4COL	\$1749	\$1784	\$2028	\$2239	\$2659	\$3007	\$3427	\$4660	\$5244

DRAKE | 4 COLUMN | SQUARE | FIXED/STATIONARY BASE



Model Number	Table Top Size	Shpg. Wght.	Base Spread	LAMINATE TOP ASSORTED EDGES							VENEER TOP	
				GRP 1	GRP 2	GRP 3	GRP 4	GRP 5	GRP 6	GRP 7	GRP 8	GRP 9
DR48S*	48" Sq.	107	54"-4COL	\$1639	\$1669	\$1875	\$2051	\$2405	\$2699	\$3052	\$4288	\$4909



OPTIONS

Add upcharge to list price and code to model number

STH	Special Table Height (other than 29")	\$200 per base
RAD	3" Radius Corners for 3MM Edge	\$200 per table

ULW	Ultra Lightweight Top	\$190
-----	-----------------------	-------