

# FABRIC INFORMATION

## ERG TERMINOLOGY

COM: Customer's Own Material  
COL: Customer's Own Leather

MB: Moisture Barrier  
FR: Fire Retardant

2FO: Two Fabric Option  
3FO: Two Fabric Option

### GRADED IN FABRICS

ERG offers graded in fabrics from the following textile companies: DesignTex, Knoll, Mayer, Momentum and more. Please visit ERG's website under the heading TEXTILES/FINISHES to find graded-in fabrics in pdf format along with a link to each vendor's website. For additional information call the manufacturer with their Toll-Free number provided. For COV and COL (Customer's Own Vinyl or Leather) please use Grade 3 List price.

### MOISTURE BARRIER:

ERG International offers an optional moisture barrier to seats only on all seating products. The barrier is applied over the foam and under the fabric. Please specify "MB" option with product model number and add corresponding list price per seat.

### FIRE RESISTANCE:

Due to the vast choice of fabrics with varying degrees of flame retardancy, we suggest you consult the published technical data of the fabric supplier.

ERG International assumes no responsibility for the flame retardancy of any fabric.

California Technical Bulletin #117 relates to fabrics as well as resilient filling materials (i.e. foam and dacron), all ERG International products conform to this standard.

Certain jurisdictions require the use of additional fire retardants such as the regulation known as California Technical Bulletin #133. ERG International provides compliance with this standard by application of a fire barrier material. Labels indicating fire retardancy compliance can be placed on the underside of all seating products when required. Please specify "FR" option with product model. The cost is \$90 List per yard of fabric required for the unit specified, or as noted.

### TWO (OR MORE) FABRIC OPTION:

When two or more fabrics are used on one unit add appropriate option Code to the model number and the price will be the grade average.

**Example A:** fabric 1 is Grade 7 and fabric 2 is Grade 5 - the entire unit will be calculated at Grade 6 pricing plus the option price.

**Example B:** fabric 1 is COM and fabric 2 is Grade 6 - the entire unit will be calculated at Grade 3 pricing plus the option price.

### FABRIC TESTING

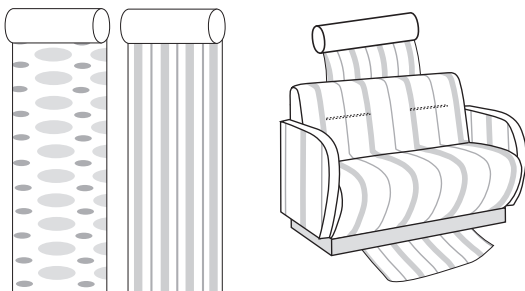
Due to the complexity of upholstering some products, some may require that fabric testing must be complete before your order is processed. Please refer to individual product price lists when specifying.

### FABRIC DIRECTION

Specify which illustration shows how fabric is to be applied to furniture.

#### OFF THE BOLT (NON-RAILROAD)

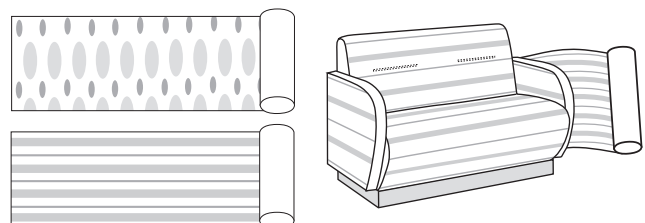
Off The Bolt fabrics require seaming of fabric on one-piece cushions greater than 48".



#### RAILROAD

Railroad fabrics allow tailoring of one-piece backs or seat cushions of sofas without seams.

OR



# COM SPECIFICATIONS

## COM SPECIFICATIONS

ERG International is not responsible for appearance, behavior, color accuracy, durability, performance, or weaving of COM materials. All responsibility for COM shipments is between the purchaser and the textile source. Customers are solely responsible for making sure the COM complies with all applicable codes and regulations. ERG International reserves the right to reject fabrics or leathers we deem unsuitable for upholstery. When this occurs, the customer will be notified in writing with an explanation of the problem. ERG International cannot be held responsible for any unsatisfactory results in the application of a COM/COL and a written release from the customer may be required before the order is processed. ERG International cannot be held responsible for tailoring variances that result from the application of a particular textile or leather.

## COM YARDAGE

All yardage requirements listed in the price list are based upon 54 plain non-directional material. Additional yardage will be required for repeats or fabric less than 54 wide.

## APPROVED COM ORDERING PROCEDURES

The fabric table below will give you approximate additional yardage requirements for repeats of 6" vertical or horizontal. Anything over should be submitted for calculation by ERG.

	54" Wide	53"-51" Wide	50"-48" Wide	47"-45" Wide	44"-36" Wide
Plain Fabric	0%	15%	30%	45%	60%
2" - 10" Repeat	10%	20%	35%	50%	65%
11" - 20" Repeat	15%	25%	40%	55%	70%
21" - 25" Repeat	20%	30%	45%	60%	75%
26" - 30" Repeat	25%	35%	50%	65%	80%
31" - 35" Repeat	30%	40%	55%	70%	85%
36" - 40" Repeat	35%	45%	60%	75%	90%
41" - 45" Repeat	40%	50%	65%	80%	95%

All stripes will be applied vertically unless specified otherwise. Patterned fabrics will be applied at our discretion unless special instructions are included with the order.

The C.O.M. yardage required is for one chair. Yardage requirements may be reduced when ordering multiple quantities. Please e-mail Customer Service for yardage calculations on multiple quantities.

In the absence of instructions, we will apply the fabric pattern according to our best judgement. We reserve the right to railroad fabric whenever possible to avoid seams in large upholstered areas and/or single cushion units.

For Customer's Own Leather (COL),

Leather footage requirements listed in the price list refer to usable leather footage that meets the standards described above. Calf hides must be at least 30 square feet of clean usable matching hides. When specifying calf hides, add 15% to COL requirements shown in the price list.

All COL will be priced at Grade 3 List Pricing.

## SHIPPING INSTRUCTIONS:

Instruct the supplier to mark the outside of the COM/COL package with the following information:

- A) Your Company's Name.
- B) Your Purchase Order Number given to ERG
- C) The supplier's Name, COM/COL Name, number and amount of yardage shipped.
- D) The ERG model number to which the COM/COL is to be applied.
- E) If the COM/COL has a pattern, it must be stated whether the direction you want is horizontal or vertical. All patterns will be applied vertically unless marked to the contrary.

Ship the packaged COM/COL prepaid:

ERG International  
361 N. Bernoulli Circle  
Oxnard, CA 93030.

Please Note: Sidemark package with your P.O. number, Model Number or Order Number.