



**NAPOLI TABLE OF CONTENTS**

Napoli Banquettes .....	2
Napoli Café and Bar Height Tables .....	7

**NAPOLI SERIES**

The Napoli Banquette series has several standard upholstery designs and includes a table series. Seats and backs can be upholstered with matching fabrics, or choose an optional two tone or vinyl and fabric combination to match any color scheme.



**ORDERING INFORMATION**

- 1) Series Name
- 2) Model Number
- 3) Size
- 4) Quantity
- 5) Fabric Grade & Number
- 6) Contrasting Fabrics
- 7) Back Fabric Design Options
- 8) Plinth Base Finish
- 9) Optional Items

**NAPOLI BANQUETTE SPECIFICATIONS**

**Upholstery**

Seat and back are covered in choice of fabric, vinyl, crypton, leather or COM. All foam is fully bonded to frame. Seat cushions are 5" graded high resiliency (H.R.) block foam with back 2.5" (H.R.) foam. Seats and backs are covered entirely with special bonded polyester fiber to protect final upholstery. ERG uses only water based glues and adhesives in our upholstery process.

**Frame Construction**

Frame assembly is constructed of multi-ply hardwood, with tongue and groove construction. No sag-springs are installed in seat & back along with interlocking helicoil springs to prevent sagging and provide additional lower back and seat support.

**Plinth Base**

The plinth base is available in a choice of laminate or unfinished so that you can add your own cove base or carpet.

**Anchoring**

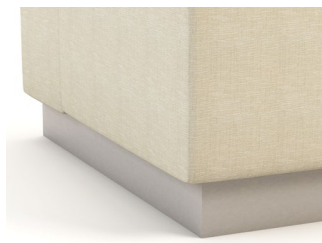
Napoli dining benches are easy to anchor to the floor. Floor mount instructions can be provided by customer service. Hardware for anchoring bench to the floor is not included.

**Note:**

Please allow extra fabric for repeat design.



STANDARD BANQUETTE COMES WITH A FLUSH PLINTH BASE ON SIDES FOR GANGING, AND RECESSED FRONT.



OPTIONAL RECESSED PLINTH BASE AVAILABLE, ON ONE OR TWO SIDES.

**COLORS / FINISHES**

**Back Designs**

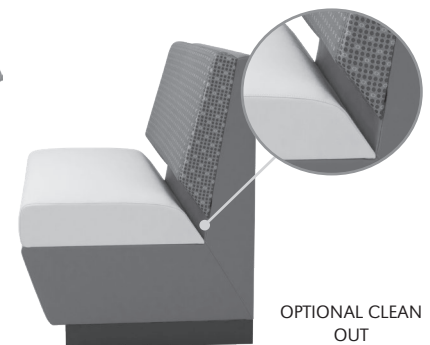
Split and V-designs for the back are included in the list price.

**OPTIONS**

- CODE: FR - CAL 133 (TB 133) Fire Retardant
- CODE: MB -Moisture Barrier (up to 60" overall width)
- CODE: MB60 -Moisture Barrier (over 60" overall width)
- CODE: MBB -Moisture Barrier (up to 60" overall width Back-to-Back)
- CODE: MBB60 -Moisture Barrier (over 60" overall width Back-to-Back)
- CODE: 2FO - Two Fabric Option
- CODE: 3FO - Three Fabric Option
- CODE: 4FO - Four Fabric Option
- CODE: USS - Under Seat Fully Lined Storage
- CODE: CO - Clean Out (overall width up to 50")
- CODE: CO1 - Clean Out (overall width over 50")
- CODE: UFB - Unfinished Plinth Base
- CODE: RB1 - Recessed Plinth Base (1 Side only)
- CODE: RB2 - Recessed Plinth Base (2 Sides)



OPTIONAL UNDER SEAT FULLY LINED STORAGE



OPTIONAL CLEAN OUT

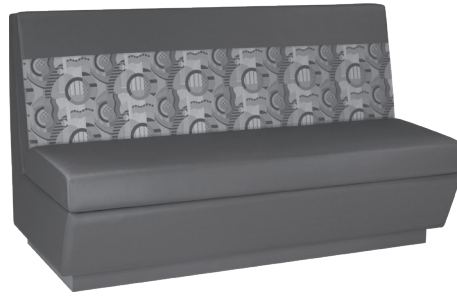
SOFT SEATING	WEIGHT LIMIT
1 Seat	500 lbs.
2 Seat	1000 lbs.
3 Seat	1500 lbs.

① STANDARD DESIGN BACK



48" wide bench with Standard design and optional contrasting fabrics

② SPLIT DESIGN BACK



48" wide bench with Split design and optional contrasting fabrics

③ V-DESIGN BACK



48" wide bench with optional contrasting fabrics in V-design

**Three Back Designs**

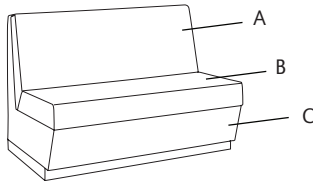
There are three back designs available for Napoli Banquettes. Please specify: Standard Back Design, Split Fabric Design or V-Back Design.

**Ordering Contrasting Fabrics**

Due to back design options it is necessary to include a sketch/layout with your order to specify which fabric is to be used on each area of the Banquette. Use the callouts shown to define fabric areas in your sketch. Please specify a back design, Standard, Split Fabric Design or V-Design. (V-Design is available on straight configured seating only.)

**COM YARDAGE FOR NAPOLI BANQUETTE DESIGNS**

Standard Back Design

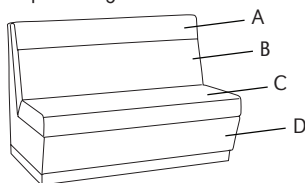


**Standard Back Design**

Model	Total	A - Back	B - Seat	C - Frame
360 - 48" Wide Straight	5.5 yards	1.75 yards	1.75 yards	3 yards
362 - 60" Wide Straight	7 yards	2.25 yards	2.25 yards	3.5 yards
365 - 72" Wide Straight	9 yards	2.5 yards	2.5 yards	4 yards

Please allow extra fabric for repeat design

Split Design Back

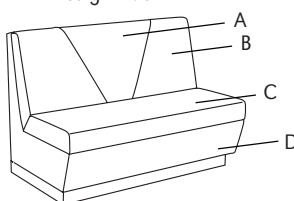


**Split Design Back**

Model	Total	A - Split Back	B - Split Back	C - Seat	D - Frame
360 - 48" Wide Straight	7 yards	1.5 yards	1.5 yards	1.75 yards	3 yards
362 - 60" Wide Straight	10 yards	2 yards	2.5 yards	2.25 yards	3.5 yards
365 - 72" Wide Straight	12 yards	2.5 yards	3 yards	3 yards	4 yards

Please allow extra fabric for repeat design

V-Design Back



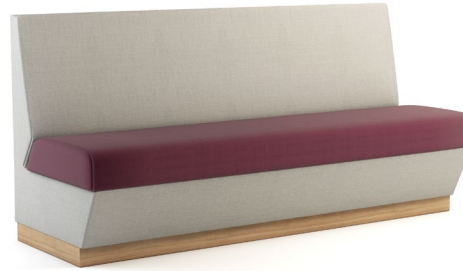
**V-Design Back\***

Model	Total	A - V-Back	B - V-Back	C - Seat	D - Frame
360 - 48" Wide	6 yards	1 yard	1 yard	1.5 yards	2.5 yards
362 - 60" Wide	8.5 yards	1 yard	2 yards	2.5 yards	3 yards
365 - 72" Wide	10 yards	1 yard	2.5 yards	3 yards	3.5 yards

Please allow extra fabric for repeat design

\*V-Design is available on straight configured seating only.

DIMENSIONS	48" Wide Banquette	60" Wide Banquette	72" Wide Banquette
Seat Depth:	18.5"	18.5"	18.5"
Seat Height:	18"	18"	18"
Overall Depth:	27.5"	27.5"	27.5"
Overall Width:	48"	60"	72"
Overall Height:	35"	35"	35"
Qty./Wt.:	1 ea./150 lbs.	1 ea./180 lbs.	1 ea./220 lbs.



NAPOLI STRAIGHT BANQUETTE  
WITH TWO FABRIC OPTION

**MODEL / DESCRIPTION / LIST PRICING**



**360**    48" Wide Banquette    COM Yardage: Total: 6.5 Yds. / Bottom Frame: 3 Yds. / Back: 1.75 Yds. / Seat: 1.75 Yds.

COM	GR1	GR2	GR3	GR4	GR5	GR6	GR7	GR8	GR9	GR10	LEA
\$2252	\$2410	\$2506	\$2606	\$2711	\$2819	\$2932	\$3049	\$3171	\$3297	\$3429	\$4054

**362**    60" Wide Banquette    COM Yardage: Total: 8 Yds. / Bottom Frame: 3.5 Yds. / Back: 2.25 Yds. / Seat: 2.25 Yds.

COM	GR1	GR2	GR3	GR4	GR5	GR6	GR7	GR8	GR9	GR10	LEA
\$3325	\$3557	\$3699	\$3848	\$4001	\$4162	\$4327	\$4501	\$4680	\$4868	\$5063	\$5984

**365**    72" Wide Banquette    COM Yardage: Total: 9 Yds. / Bottom Frame: 4 Yds. / Back: 2.5 Yds. / Seat: 2.5 Yds.

COM	GR1	GR2	GR3	GR4	GR5	GR6	GR7	GR8	GR9	GR10	LEA
\$4468	\$4781	\$4973	\$5171	\$5378	\$5593	\$5817	\$6050	\$6291	\$6543	\$6805	\$8043

**OPTIONS**

Add upcharge to list price and code to model number

FR	CAL 133 (TB 133) Fire Retardant per yard	\$90/yd.
MB	Moisture Barrier - up to 60" width	\$125 each
MB60	Moisture Barrier - over 60" width	\$200 each
2FO	Two Fabric Option	\$98
3FO	Three Fabric Option	\$148
4FO	Four Fabric Option	\$215

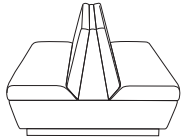
USS	Under Seat Fully Lined Storage	\$450
CO	Clean Out (overall width up to 50")	\$250
CO1	Clean Out (overall width over 50")	\$385
UFB	Unfinished Plinth Base	Deduct \$80
RB1	Recessed Base, 1 side	\$110
RB2	Recessed Base, 2 sides	\$220

DIMENSIONS	48" Wide B2B Banquette	60" Wide B2B Banquette	72" Wide B2B Banquette
Seat Depth:	18.5"	18.5"	18.5"
Seat Height:	18"	18"	18"
Overall Depth:	54"	54"	54"
Overall Width:	48"	60"	72"
Overall Height:	35"	35"	35"
Qty./Wt.:	1 ea./300 lbs.	1 ea./350 lbs.	1 ea./400 lbs.



NAPOLI BACK-TO-BACK BANQUETTE  
WITH CLEAN OUT OPTION

**MODEL / DESCRIPTION / LIST PRICING**



**362-B2B** 48" Back-to-Back Banquette COM Yardage: Total: 11 Yds. / Bottom Frame: 3 Yds. / Back: 4 Yds. / Seat: 4 Yds.

COM	GR1	GR2	GR3	GR4	GR5	GR6	GR7	GR8	GR9	GR10	LEA
\$4278	\$4577	\$4760	\$4951	\$5149	\$5355	\$5569	\$5792	\$6023	\$6264	\$6515	\$7700

**362-B2B** 60" Back-to-Back Banquette COM Yardage: Total: 12.5 Yds. / Bottom Frame: 3.5 Yds. / Back: 4.5 Yds. / Seat: 4.5 Yds.

COM	GR1	GR2	GR3	GR4	GR5	GR6	GR7	GR8	GR9	GR10	LEA
\$6315	\$6758	\$7028	\$7310	\$7602	\$7906	\$8222	\$8551	\$8892	\$9249	\$9618	\$11368

**365-B2B** 72" Back-to-Back Banquette COM Yardage: Total: 14 Yds. / Bottom Frame: 4 Yds. / Back: 5 Yds. / Seat: 5 Yds.

COM	GR1	GR2	GR3	GR4	GR5	GR6	GR7	GR8	GR9	GR10	LEA
\$8490	\$9084	\$9448	\$9826	\$10219	\$10628	\$11053	\$11495	\$11955	\$12433	\$12931	\$15283

**OPTIONS**

Add upcharge to list price and code to model number

FR	CAL 133 (TB 133) Fire Retardant per yard	\$90/yd.
MB	Moisture Barrier - up to 60" width	\$125 each
MB60	Moisture Barrier - over 60" width	\$200 each
MBB	Moisture Barrier - up to 60" width (Back-to-Back)	\$250 each
MBB60	Moisture Barrier - over 60" width (Back-to-Back)	\$400 each
2FO	Two Fabric Option	\$98
3FO	Three Fabric Option	\$148

4FO	Four Fabric Option	\$215
USS	Under Seat Fully Lined Storage	\$450
CO	Clean Out (overall width up to 50")	\$250
CO1	Clean Out (overall width over 50")	\$385
UFB	Unfinished Plinth Base	Deduct \$80
RB1	Recessed Base, 1 side	\$110
RB2	Recessed Base, 2 sides	\$220

**PRIVACY PANELS ONLY**

DIMENSIONS	48" Wide Privacy Panel	60" Wide Privacy Panel	72" Wide Privacy Panel
Panel Depth:	1"	1"	1"
Panel Width:	48"	60"	72"
Panel Height:	48"	48"	48"

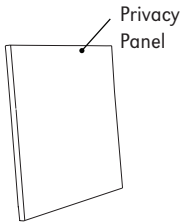


NAPOLI BANQUETTE  
WITH PRIVACY PANEL



1/2" THICK ACRYLIC  
PRIVACY PANELS AVAILABLE

**MODEL / DESCRIPTION / LIST PRICING**



**360P 48" Wide Privacy Panel**

COM Yardage: Total: 3 Yds. (Please allow extra fabric for repeat design.)

COM	GR1	GR2	GR3	GR4	GR5	GR6	GR7	GR8	GR9	GR10	LEA
\$948	\$1015	\$1055	\$1098	\$1141	\$1187	\$1234	\$1283	\$1334	\$1389	\$1443	\$1706
LAMINATE			VENEER			ACRYLIC					
\$929			\$1827			CALL					

**362P 60" Wide Privacy Panel**

COM Yardage: Total: 4 Yds. (Please allow extra fabric for repeat design.)

COM	GR1	GR2	GR3	GR4	GR5	GR6	GR7	GR8	GR9	GR10	LEA
\$1250	\$1339	\$1391	\$1448	\$1505	\$1565	\$1627	\$1693	\$1760	\$1831	\$1904	\$2251
LAMINATE			VENEER			ACRYLIC					
\$1214			\$2350			CALL					

**365P 72" Wide Privacy Panel**

COM Yardage: Total: 5 Yds. (Please allow extra fabric for repeat design.)

COM	GR1	GR2	GR3	GR4	GR5	GR6	GR7	GR8	GR9	GR10	LEA
\$1531	\$1638	\$1704	\$1772	\$1843	\$1916	\$1993	\$2073	\$2156	\$2242	\$2330	\$2756
LAMINATE			VENEER			ACRYLIC					
\$1477			\$2759			CALL					

**Note:** For laminate privacy panels, 3MM PVC or laminate self edges are available.

**NAPOLI**

Napoli Series is an ERG special economically priced offering from ERG. Bases include X-base, T-base and Floor mount.



NAPOLI SQUARE



NAPOLI RECTANGLE

**ORDERING INFORMATION**

- |                            |                               |
|----------------------------|-------------------------------|
| 1) Series Name             | 6) Laminate Selection and No. |
| 2) Model Number            | 7) Edge Style Code and Color  |
| 3) Size                    | 8) Wood Species               |
| 4) Quantity                | 9) Wood Stain Color           |
| 5) Powder Coat Base Finish | 10) Optional Items            |

**NAPOLI SPECIFICATIONS**

**Napoli Base**

- Table Height** Table height is 29" to 30" depending on table top specified. Bar Height table is 42".
- Column** 3" round 14 gauge steel tubing welded to base and top plate.
- Base** The Napoli Base has a 22", 26", 32" or 38" X-base spread or 22" T-legs made of formed steel.
- Floor Mount** The Floor Mounted Base is made of 6" base spread diameter cast iron, with an 8" steel cover. Optional cover locking screw available.
- Plate** 10" x 10" square • 12" X 12" square  
14" X 14" square • 24" x 24" square
- Glides** Adjustable zinc rubber cushion glides
- Assembly** Base mounts to top with 1/4"- 20 machine screws into metal inserts - NO WOOD SCREWS ARE USED.

**FINISHES**

**Table Bases and Legs**

Finished in standard powder coat colors.

**Laminate/Veneer Selections**

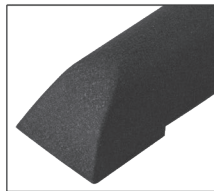
ERG offers over 1000 standard laminate choices from Nevamar, Wilsonart, Formica and Pionite. Wood veneer is available in transparent stain colors - custom stain matching available.

**Special Edge Note**

Square tables using PVC T-MOLD edge will have a 2" radius on all corners. When ganging or butting tables together, ERG recommends using 3MM flat edge or flat wood edge.

**OPTIONS**

- CODE: STH - Special Table Height, for any table height other than 29" or Bar Height.
- CODE: RP - Painted Foot Ring for Bar Height
- CODE: LCS - Locking Cover Screw for floor mount
- CODE: GD - Ganging
- CODE: ULW - Ultra Lightweight Top
- CODE: RAD - 3" Radius Corners for 3MM Edge



NAPOLI FOOT DETAIL  
BLACK TEXTURE FINISH



**MODEL / DESCRIPTION / LIST PRICING**

**NAPOLI | CAFÉ | ROUND**

● ROUND	Model Number	Table Top Size	Shpg. Wght.	Base Spread	LAMINATE TOP ASSORTED EDGES							VENEER TOP	
					GRP 1	GRP 2	GRP 3	GRP 4	GRP 5	GRP 6	GRP 7	GRP 8	GRP 9
					NP24D	24" Dia.	38	22" - X	\$445	\$456	\$529	\$592	\$717
NP30D	30" Dia.	55	22" - X	\$487	\$501	\$598	\$682	\$849	\$988	\$1154	\$1395	\$1465	
NP36D	36" Dia.	88	30" - X	\$611	\$628	\$746	\$846	\$1049	\$1216	\$1418	\$1734	\$1837	
NP42D	42" Dia.	100	36" - X	\$838	\$860	\$1013	\$1143	\$1406	\$1626	\$1887	\$2351	\$2516	
NP48D	48" Dia.	110	36" - X	\$930	\$956	\$1141	\$1301	\$1619	\$1884	\$2202	\$2660	\$2795	

**NAPOLI | CAFÉ | SQUARE**

■ SQUARE	Model Number	Table Top Size	Shpg. Wght.	Base Spread	LAMINATE TOP ASSORTED EDGES							VENEER TOP	
					GRP 1	GRP 2	GRP 3	GRP 4	GRP 5	GRP 6	GRP 7	GRP 8	GRP 9
					NP24S	24" Sq.	48	22" - X	\$443	\$453	\$530	\$595	\$725
NP2430S	24x30 Sq.	53	22" - X	\$480	\$493	\$581	\$657	\$809	\$936	\$1090	\$1349	\$1439	
NP30S	30" Sq.	69	22" - X	\$477	\$495	\$590	\$673	\$839	\$978	\$1143	\$1373	\$1436	
NP36S	36" Sq.	111	30" - X	\$621	\$638	\$760	\$863	\$1071	\$1244	\$1452	\$1767	\$1867	
NP42S	42" Sq.	125	36" - X	\$847	\$870	\$1022	\$1154	\$1417	\$1635	\$1899	\$2373	\$2545	

**NAPOLI | CAFÉ | RECTANGLE**

■ RECTANGLE	Model Number	Table Top Size	Shpg. Wght.	Base Spread	LAMINATE TOP ASSORTED EDGES							VENEER TOP	
					GRP 1	GRP 2	GRP 3	GRP 4	GRP 5	GRP 6	GRP 7	GRP 8	GRP 9
					NP2448	24x48 Sq.	70	22"x30" - X	\$779	\$798	\$919	\$1025	\$1234
NP2460	24x60 Sq.	79	2-22" - T	\$818	\$838	\$974	\$1091	\$1323	\$1517	\$1752	\$2251	\$2456	
NP2472	24x72 Sq.	90	2-22" - T	\$853	\$874	\$1024	\$1151	\$1405	\$1618	\$1873	\$2371	\$2563	
NP3048	30x48 Sq.	79	2-22" - T	\$815	\$834	\$969	\$1083	\$1317	\$1510	\$1740	\$2240	\$2446	
NP3060	30x60 Sq.	90	2-22" - T	\$869	\$892	\$1045	\$1177	\$1441	\$1662	\$1925	\$2423	\$2611	
NPT3072	30x72 Sq.	102	2-22" - T	\$916	\$941	\$1111	\$1257	\$1549	\$1791	\$2083	\$2580	\$2750	

**NAPOLI | BAR HEIGHT**

● ROUND	Model Number	Table Top Size	Shpg. Wght.	Base Spread	LAMINATE TOP ASSORTED EDGES							VENEER TOP	
					GRP 1	GRP 2	GRP 3	GRP 4	GRP 5	GRP 6	GRP 7	GRP 8	GRP 9
					NPH24D	24" Dia.	63	22" - X	\$628	\$639	\$713	\$776	\$901
NPH30D	30" Dia.	73	30" - X	\$670	\$685	\$782	\$865	\$1032	\$1170	\$1336	\$1797	\$2011	
NPH36D	36" Dia.	86	36" - X	\$772	\$787	\$906	\$1006	\$1209	\$1376	\$1578	\$2085	\$2312	

**OPTIONS**

Add upcharge to list price and code to model number

STH	Special Table Height, other than 29" or bar height	\$150 per base	ULW	Ultra Lightweight Top	\$190
RP	Painted Footring for Bar Height	\$110	RAD	3" Radius Corners for 3MM Edge	\$200 per table
GD	Ganging per table	\$95			