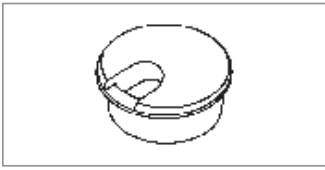


TABLE GROMMETS / WIRE MANAGEMENT



Round Table Grommet

- 2 piece unit: cap and liner
- 1.75" inside diameter
- 2" overall diameter

MODEL

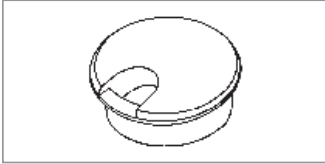
GR01-B **Black Finish**

LIST PRICE

\$51

GR01-S **Silver Finish**

\$51



Round Table Grommet

- 2 piece unit: cap and liner
- 2.5" inside diameter
- 3" overall diameter

MODEL

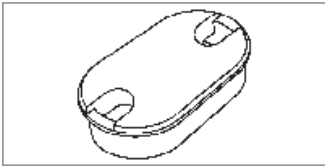
GR02-B **Black Finish**

LIST PRICE

\$63

GR02-S **Silver Finish**

\$63



Oval Table Grommet

- 2 piece unit: cap and liner
- 3.75" x 1.75" inside opening
- 4" x 2" overall

MODEL

GR03-B **Black Finish**

LIST PRICE

\$86

GR03-S **Silver Finish**

\$86



Access Hole

- For power/data daisy chain
- Available on laminate and upholstered units
- 1.75" diameter opening

MODEL

Laminate

AH

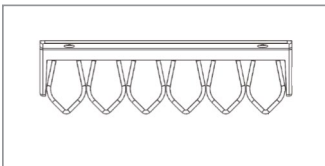
LIST PRICE

\$51

Upholstered

AH-U

\$51



6-Loop Wire Management

- under table cable grips
- six loops to organize wires
- black or silver finish

MODEL

Black Finish

GRIP6-B

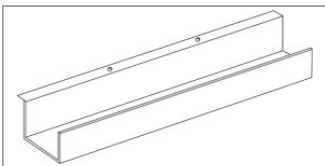
LIST PRICE

\$63 (set of 2)

Silver Finish

GRIP6-AL

\$63 (set of 2)



Wire Management Trough

- under table metal trough
- field installed

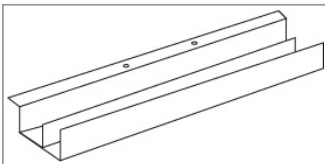
MODEL

Black Finish

MMTO1

LIST PRICE

\$109 per table



Split Channel Wire Management Trough

- under table metal trough
- two channels to separate voice/data
- field installed

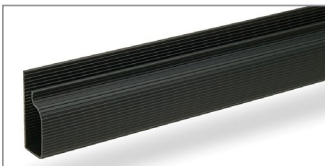
MODEL

Black Finish

MMTO2

LIST PRICE

\$155 per table



Cable Channel

- highly effective plastic channel
- field installed with included tape
- 3 lengths available

MODEL

Black Finish

JCAB2 (2ft.)

JCAB3 (3ft.)

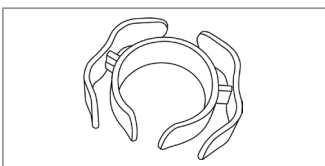
JCAB4 (4ft.)

LIST PRICE

\$41

\$62

\$82



Cable Clip

- snap on table leg installation
- no hardware required
- easily adjustable and customizable

MODEL

Black Finish

CBL2

LIST PRICE

\$26 (set of 2)

TABLE LEG WIRE MANAGEMENT



<p>Plastic Stick On Snap Sleeve (Rectangular Metal Leg)</p> <p>features:</p> <ul style="list-style-type: none"> • 24" or 36" snap sleeve wire concealment • front panel snaps shut with invisible hinge • textured edges protect against fingerprints 	<table border="0"> <tr> <td>MODEL</td> <td style="text-align: right;">LIST PRICE</td> </tr> <tr> <td>Black Matte</td> <td></td> </tr> <tr> <td>LWM2-04-B (24")</td> <td style="text-align: right;">\$38</td> </tr> <tr> <td>LWM3-04-B (36")</td> <td style="text-align: right;">\$48</td> </tr> <tr> <td>Gray</td> <td></td> </tr> <tr> <td>LWM2-04-G (24")</td> <td style="text-align: right;">\$38</td> </tr> <tr> <td>LWM3-04-G (36")</td> <td style="text-align: right;">\$48</td> </tr> </table>	MODEL	LIST PRICE	Black Matte		LWM2-04-B (24")	\$38	LWM3-04-B (36")	\$48	Gray		LWM2-04-G (24")	\$38	LWM3-04-G (36")	\$48
MODEL	LIST PRICE														
Black Matte															
LWM2-04-B (24")	\$38														
LWM3-04-B (36")	\$48														
Gray															
LWM2-04-G (24")	\$38														
LWM3-04-G (36")	\$48														



<p>Plastic Stick On Sleeve</p> <p>features:</p> <ul style="list-style-type: none"> • 22" sleeve • attaches with adhesive strips • separate channels for power/data • available on 2" or 3" diameter columns 	<table border="0"> <tr> <td>MODEL</td> <td style="text-align: right;">LIST PRICE</td> </tr> <tr> <td>Black</td> <td></td> </tr> <tr> <td>LWM-01-B</td> <td style="text-align: right;">\$63</td> </tr> <tr> <td>Silver</td> <td></td> </tr> <tr> <td>LWM-01-S</td> <td style="text-align: right;">\$63</td> </tr> </table>	MODEL	LIST PRICE	Black		LWM-01-B	\$63	Silver		LWM-01-S	\$63
MODEL	LIST PRICE										
Black											
LWM-01-B	\$63										
Silver											
LWM-01-S	\$63										



<p>Aluminum Snap On Sleeve</p> <p>features:</p> <ul style="list-style-type: none"> • 22" snap on sleeve • separate channels for power/data • available on 2" or 3" diameter columns 	<table border="0"> <tr> <td>MODEL</td> <td style="text-align: right;">LIST PRICE</td> </tr> <tr> <td>Color Matched Finish</td> <td></td> </tr> <tr> <td>LWM-02</td> <td style="text-align: right;">\$74</td> </tr> </table>	MODEL	LIST PRICE	Color Matched Finish		LWM-02	\$74
MODEL	LIST PRICE						
Color Matched Finish							
LWM-02	\$74						



<p>Built-in Hinge Door</p> <p>features:</p> <ul style="list-style-type: none"> • door integrated into table leg • all wires contained inside the table leg • available on Brandon models only 	<table border="0"> <tr> <td>MODEL</td> <td style="text-align: right;">LIST PRICE</td> </tr> <tr> <td>Color Matched Finish</td> <td></td> </tr> <tr> <td>LWM-03</td> <td style="text-align: right;">\$143</td> </tr> </table>	MODEL	LIST PRICE	Color Matched Finish		LWM-03	\$143
MODEL	LIST PRICE						
Color Matched Finish							
LWM-03	\$143						



<p>Power Leg</p> <p>features:</p> <ul style="list-style-type: none"> • access holes integrated into table leg • all wires contained inside the table leg • available on Arccos and Strata models only 	<table border="0"> <tr> <td>MODEL</td> <td style="text-align: right;">LIST PRICE</td> </tr> <tr> <td>Black Finish Ring</td> <td></td> </tr> <tr> <td>P-LEG</td> <td style="text-align: right;">\$132</td> </tr> </table>	MODEL	LIST PRICE	Black Finish Ring		P-LEG	\$132
MODEL	LIST PRICE						
Black Finish Ring							
P-LEG	\$132						

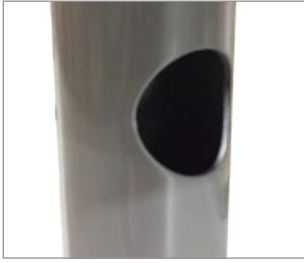


<p>Modified Top Plate and Column</p> <p>features:</p> <ul style="list-style-type: none"> • allows power in a center column table • all wires contained inside the table leg • grommet at base of column • Villa and Cove (up to COV-2U) will fit - please call factory to confirm table and power/data choice 	<table border="0"> <tr> <td>MODEL</td> <td style="text-align: right;">LIST PRICE</td> </tr> <tr> <td>Color Matched Finish</td> <td></td> </tr> <tr> <td>MTP (up to 42" dia. top)</td> <td style="text-align: right;">\$315</td> </tr> <tr> <td>MTP-L (over 42" dia. top)</td> <td style="text-align: right;">\$463</td> </tr> </table>	MODEL	LIST PRICE	Color Matched Finish		MTP (up to 42" dia. top)	\$315	MTP-L (over 42" dia. top)	\$463
MODEL	LIST PRICE								
Color Matched Finish									
MTP (up to 42" dia. top)	\$315								
MTP-L (over 42" dia. top)	\$463								



<p>Snake</p> <p>features:</p> <ul style="list-style-type: none"> • used for stationary or adjustable height • adjusts up to 51" • completely hides and protects all wiring • available in Black or Silver 	<table border="0"> <tr> <td>MODEL</td> <td style="text-align: right;">LIST PRICE</td> </tr> <tr> <td>Black:</td> <td></td> </tr> <tr> <td>SNAKE-BL</td> <td style="text-align: right;">\$159</td> </tr> <tr> <td>Silver:</td> <td></td> </tr> <tr> <td>SNAKE-S</td> <td style="text-align: right;">\$159</td> </tr> </table>	MODEL	LIST PRICE	Black:		SNAKE-BL	\$159	Silver:		SNAKE-S	\$159
MODEL	LIST PRICE										
Black:											
SNAKE-BL	\$159										
Silver:											
SNAKE-S	\$159										

DRAKE TABLE LEG WIRE MANAGEMENT



Located on each column of Drake tables, the wire access hole allows cords and cables from table top power/data units to travel down the inside of the column toward the floor. Available on all Drake table bases with a round or oval column.

	<p>X-Base wire management</p> <p>features:</p> <ul style="list-style-type: none"> • 1.5" diameter access hole • hole located at top of column 	<p>MODEL DMH01</p>	<p>LIST PRICE \$71 per table</p>
	<p>T-Leg / C-Leg wire management</p> <p>features:</p> <ul style="list-style-type: none"> • 1.5" diameter access hole • hole located at top of each column • access hole on both columns 	<p>MODEL DMH02</p>	<p>LIST PRICE \$142 per table</p>
	<p>4-Column wire management</p> <p>features:</p> <ul style="list-style-type: none"> • 1.5" diameter access hole • hole located at top of each column • access hole on all four columns 	<p>MODEL DMH03</p>	<p>LIST PRICE \$283 per table</p>
	<p>Y-Base wire management</p> <p>features:</p> <ul style="list-style-type: none"> • 1.5" diameter access hole • hole located at top of each column • access hole on both columns 	<p>MODEL DMH04</p>	<p>LIST PRICE \$142 per table</p>
	<p>TT-Leg wire management</p> <p>features:</p> <ul style="list-style-type: none"> • 1.5" diameter access hole • hole located at top of each column • access hole on both columns 	<p>MODEL DMH05</p>	<p>LIST PRICE \$142 per leg</p>