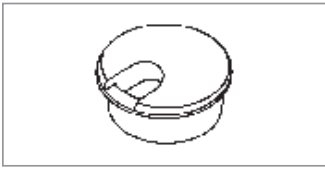


**TABLE GROMMETS / WIRE MANAGEMENT**



**Round Table Grommet**

- 2 piece unit: cap and liner
- 1.75" inside diameter
- 2" overall diameter

**MODEL**

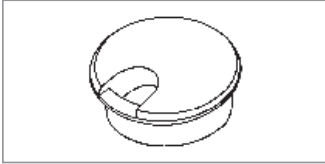
GR01-B **Black Finish**

**LIST PRICE**

\$51

GR01-S **Silver Finish**

\$51



**Round Table Grommet**

- 2 piece unit: cap and liner
- 2.5" inside diameter
- 3" overall diameter

**MODEL**

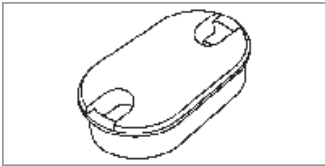
GR02-B **Black Finish**

**LIST PRICE**

\$63

GR02-S **Silver Finish**

\$63



**Oval Table Grommet**

- 2 piece unit: cap and liner
- 3.75" x 1.75" inside opening
- 4" x 2" overall

**MODEL**

GR03-B **Black Finish**

**LIST PRICE**

\$86

GR03-S **Silver Finish**

\$86



**Access Hole**

- For power/data daisy chain
- Available on laminate and upholstered units
- 1.75" diameter opening
- grommet insert (grommet cap if hole exposed)

**MODEL**

**Laminate**

AH-L

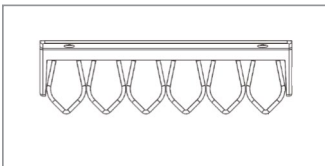
**LIST PRICE**

\$51

**Upholstered**

AH-U

\$51



**6-Loop Wire Management**

- under table cable grips
- six loops to organize wires
- black or silver finish

**MODEL**

**Black Finish**

GRIP6-B

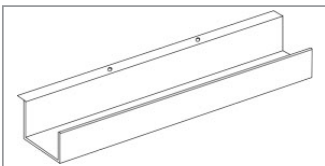
**LIST PRICE**

\$63 (set of 2)

**Silver Finish**

GRIP6-AL

\$63 (set of 2)



**Wire Management Trough**

- under table metal trough
- field installed

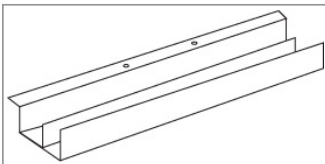
**MODEL**

**Black Finish**

MMTO1

**LIST PRICE**

\$109 per table



**Split Channel Wire Management Trough**

- under table metal trough
- two channels to separate voice/data
- field installed

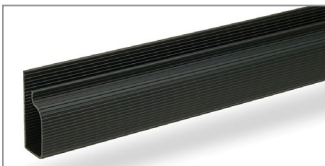
**MODEL**

**Black Finish**

MMTO2

**LIST PRICE**

\$155 per table



**Cable Channel**

- highly effective plastic channel
- field installed with included tape
- 3 lengths available

**MODEL**

**Black Finish**

JCAB2 (2ft.)

JCAB3 (3ft.)

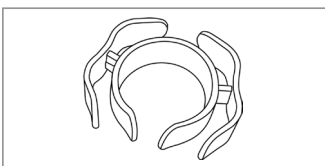
JCAB4 (4ft.)

**LIST PRICE**

\$41

\$62

\$82



**Cable Clip**

- snap on table leg installation
- no hardware required
- easily adjustable and customizable

**MODEL**

**Black Finish**

CBL2

**LIST PRICE**

\$26 (set of 2)

**TABLE LEG WIRE MANAGEMENT**



**Plastic Stick On Snap Sleeve (Rectangular Metal Leg)**

features:

- 24" or 36" snap sleeve wire concealment
- front panel snaps shut with invisible hinge
- textured edges protect against fingerprints

**MODEL**

- Black Matte**  
LWM2-04-B (24")  
LWM3-04-B (36")
- Gray**  
LWM2-04-G (24")  
LWM3-04-G (36")

**LIST PRICE**

- \$38  
\$48  
\$38  
\$48



**Plastic Stick On Sleeve**

features:

- 22" sleeve
- attaches with adhesive strips
- separate channels for power/data
- available on 2" or 3" diameter columns

**MODEL**

- Black**  
LWM-01-B
- Silver**  
LWM-01-S

**LIST PRICE**

- \$63  
\$63



**Aluminum Snap On Sleeve**

features:

- 22" snap on sleeve
- separate channels for power/data
- available on 2" or 3" diameter columns

**MODEL**

- Color Matched Finish**  
LWM-02

**LIST PRICE**

- \$74



**Power Leg**

features:

- access holes integrated into table leg
- all wires contained inside the table leg
- available on Arccos and Strata models only

**MODEL**

- Black Finish Ring**  
P-LEG

**LIST PRICE**

- \$132



**Modified Top Plate and Column**

features:

- allows power in a center column table
- all wires contained inside the table leg
- grommet at base of column
- available on most models
- please call factory to confirm

**MODEL**

- Color Matched Finish**  
MTP (up to 42" D top)  
MTP-L (over 42" D top)

**LIST PRICE**

- \$315  
\$463



**Snake**

features:

- used for stationary or adjustable height
- adjusts up to 51"
- completely hides and protects all wiring
- available in Black or Silver

**MODEL**

- Black:**  
SNAKE-BL
- Silver:**  
SNAKE-S

**LIST PRICE**

- \$159  
\$159