

T-LEG BEAM SEATING

T-Leg beam seating features 1" x 2" arched rectangular steel tube bases with 2" elliptical steel columns attached to a steel beam. Your choice of several ERG seat styles and optional tables to fit your space.



THREE SEAT BEAM WITH WEBBY SEATS AND
UPHOLSTERED SEAT INSERTS



T-LEG DETAIL

ORDERING INFORMATION

To Order Please Specify:

- | | |
|------------------------------------|---------------------------------|
| 1) Series Name | 8) Upholstery |
| 2) Model Number | 9) Wood Seat Stain Color |
| 3) Quantity | 10) Table Choice |
| 4) Frame Color | 11) Laminate Selection / Number |
| 5) Layout of Seats / Arms / Tables | 12) PVC Convex Table Edge Color |
| 6) Number of Seats | 13) Any Accessories or Options |
| 7) Seat Choice | |



BEAM SEATING GENERAL SPECIFICATIONS

Frame Construction

The Beam frame is fabricated with 1" x 2" arched rectangular steel tube bases and 2" elliptical steel tube columns attached to a steel beam. The beam and legs are sand blasted and then powder coated for maximum paint adhesion.

Finish

Standard powder coat colors available.

Choice of Seats

Choose from several ERG seat styles, featuring hundreds of material and upholstery combinations.

Optional Table Tops

Laminate table top is 1.25" thick high density particle board with a PVC. Your choice of over 1000 standard laminates from brands like Nevamar, Wilsonart, Formica and Pionite.

Note

Beam seating frames are free standing. Floor mount legs are optional.

COLORS / FINISHES

Frame Finish Colors:

Standard powder coat colors available.

Wood Seat Stain Colors:

All transparent wood stain colors available.

OPTIONS

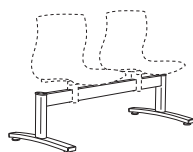
- CODE: FS/CL - Free Standing Interconnecting Legs
- CODE: BBC - Back To Back Connector Bar
- CODE: FR - CAL 133 (TB 133) Flame Retardant
- CODE: MBC - Moisture Barrier Chair
- CODE: ENG - Laser Engraving
- CODE: TT - Two Tone Wood Stains
- CODE: RB -Reverse Bubble Back Cutout - Benton
- CODE: UB - Upright Bubble Back Cutout - Benton
- CODE: VB - Vertical Bubble Back Cutout - Benton
- CODE: SQ -Square Hole Cutout Design - Dekko
- CODE: RD - Round Hole Cutout Design - Dekko
- CODE: RECT - Rectilinear Hole Cutout Design - Dekko
- CODE: AC2 - Nylon T-Arms - All Seats
- CODE: OT/S -Online Table - Square
- CODE: OT/R -Online Table - Round
- CODE: OT/E -Online Table - Rounded End
- CODE: OT/90 -Online Table - 90° Corner
- CODE: OT/D -Online Table - Double End

DIMENSIONS	2 Seat Beam	3 Seat Beam	4 Seat Beam
Overall Depth:	24"	24"	24"
Overall Width:	50"	70"	90"
Table Height:	17"	17"	17"
Weight per carton:	68 lb.	88 lb.	108 lb.



THREE SEAT BEAM WITH WEBBY SEATS

MODEL / DESCRIPTION / LIST PRICING FRAME ONLY (ADD SEAT/ARM OPTIONS TO LIST PRICE)

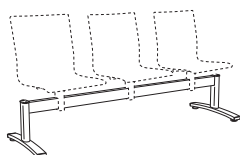


Two seat Beam frame

4202

Steel beam with arched steel tube base and column

Two Seat beam frame
\$1720

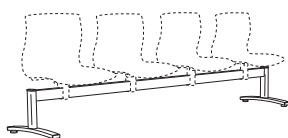


Three seat Beam frame

4203

Steel beam with arched steel tube base and column

Three Seat beam frame
\$2071



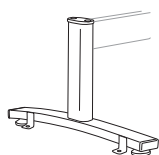
Four seat Beam frame

4204

Steel beam with arched steel tube base and column

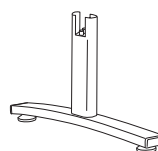
Four Seat beam frame
\$2353

FRAME OPTIONS / LIST PRICING (ADD TO FRAME LIST PRICE)



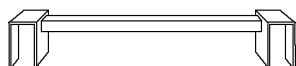
FML - Floor Mount

2 legs / 2 tabs per leg
\$262



FS/CL - Free-Standing Interconnecting Legs

per leg
\$351



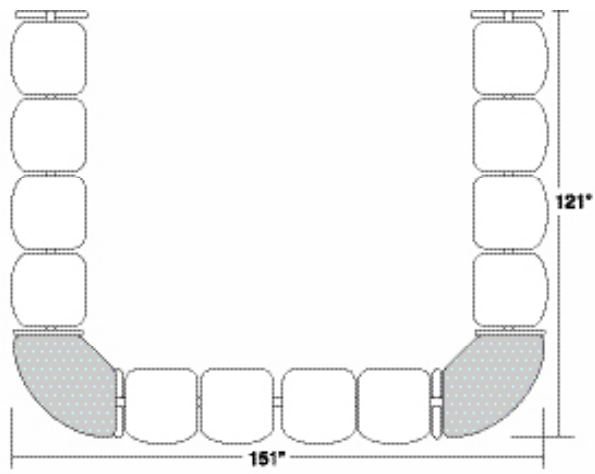
BBC - Back To Back Connector Bar

each
\$302

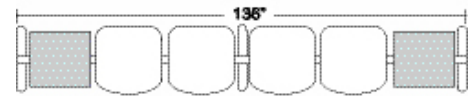
Note:

If the initial order specs adjoining two beams together, FS/CL will be substituted for one of the standard legs at no charge.

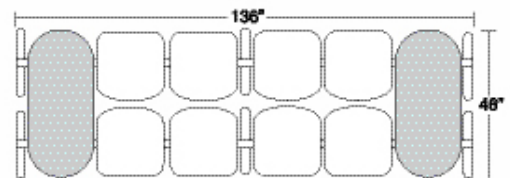
When ordering parts for reconfiguring an existing space, price is \$351 list per leg.



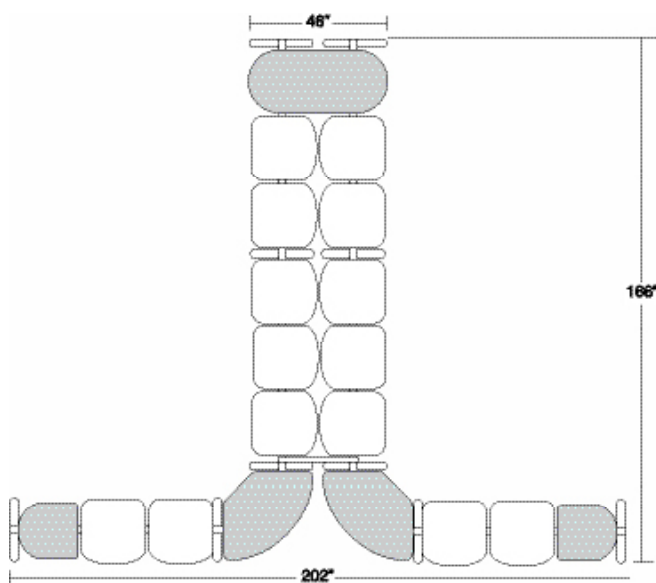
U SHAPE CONFIGURATION



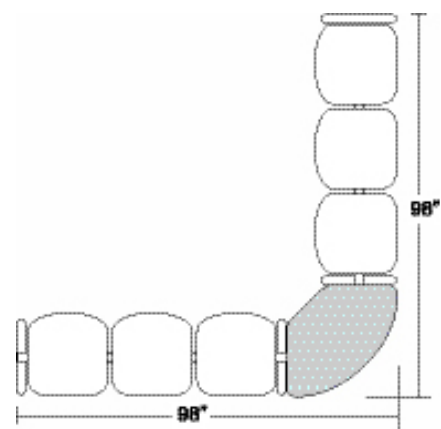
STRAIGHT LINE CONFIGURATION WITH ON-LINE TABLES



BACK TO BACK CONFIGURATION

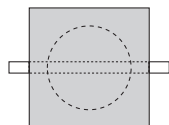


CORNER CONFIGURATION



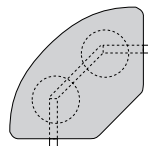
OUTSIDE FACING CORNER CONFIGURATION

ONLINE TABLE OPTIONS / LIST PRICING (ADD TO FRAME LIST PRICE)



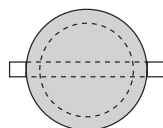
OT/S - Online Table - Square

18" x 18"
\$652



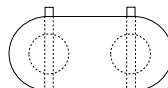
OT/90 - Online Table - 90° Corner

29" x 29"
\$1959



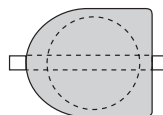
OT/R - Online Table - Round

18" diameter
\$652



OT/D - Online Table - Double End

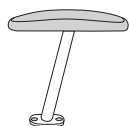
18" x 46"
\$1683



OT/E - Online Table - Rounded End

18" diameter
\$652

ARM OPTIONS / LIST PRICING (ADD TO FRAME LIST PRICE)



AC2 - Nylon T-Arm - All Seats

per arm
\$234

SEAT OPTIONS / LIST PRICING PER SEAT (ADD TO FRAME LIST PRICE)

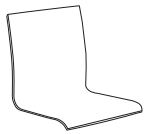
DEMI/B Benton Demi Back

 Multi-Ply Hardwood Shell
 \$512

DEMI/SIB Benton Demi Back / Upholstered Seat Insert

COM Yardage: 0.5 Yds. / seat

COM	GR1	GR2	GR3	GR4	GR5	GR6	GR7	GR8	GR9	GR10	LEA
\$618	\$661	\$688	\$714	\$743	\$773	\$806	\$837	\$870	\$905	\$941	\$1113


DKO/B Dekko

 Multi-Ply Hardwood Shell
 \$373

DKO/SIB Dekko / Upholstered Seat Insert

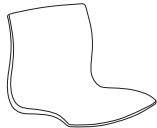
COM Yardage: 0.5 Yds. / seat

COM	GR1	GR2	GR3	GR4	GR5	GR6	GR7	GR8	GR9	GR10	LEA
\$590	\$631	\$657	\$684	\$710	\$739	\$769	\$798	\$831	\$864	\$898	\$1062

DKO/SB Dekko / Upholstered Seat and Back Inserts

COM Yardage: 1.5 Yds. / seat

COM	GR1	GR2	GR3	GR4	GR5	GR6	GR7	GR8	GR9	GR10	LEA
\$695	\$743	\$774	\$806	\$837	\$870	\$906	\$941	\$979	\$1020	\$1061	\$1252


WBY/B Webby Nylon

 100% Nylon Plastic Shell
 \$373
 Please See The Colors and Finishes Guide For All Available Shell Colors

WBY/SIB Webby / Upholstered Seat Insert

COM Yardage: 0.75 Yds. / seat

COM	GR1	GR2	GR3	GR4	GR5	GR6	GR7	GR8	GR9	GR10	LEA
\$477	\$511	\$531	\$553	\$576	\$597	\$621	\$647	\$672	\$699	\$728	\$861

WBY/SB Webby / Upholstered Seat and Back Inserts

COM Yardage: 1.5 Yds. / seat

COM	GR1	GR2	GR3	GR4	GR5	GR6	GR7	GR8	GR9	GR10	LEA
\$583	\$624	\$648	\$675	\$703	\$730	\$759	\$791	\$822	\$853	\$888	\$1049

OPTIONS

Add upcharge to list price and code to model number

FR	CAL 133 (TB 133) Fire Retardant	\$101	/ yard
MBC	Moisture Barrier Chair	\$72	
ENG	Laser Engraving Design*	\$95	/ seat
TT	Two Tone Wood Stains - Benton / Dekko	\$85	/ seat
RB	Reverse Bubble Cutout - Benton	\$85	/ seat

UB	Upright Bubble Cutout - Benton	\$85	/ seat
VB	Vertical Bubble Cutout - Benton	\$85	/ seat
SQ	Square Hole Cutout - Dekko	\$85	/ seat
RD	Round Hole Cutout - Dekko	\$85	/ seat
RECT	Rectilinear Hole Cutout - Dekko	\$85	/ seat

*One time setup fee of \$260. Minimum 12 chairs (of same design and series)