



X-BASE CAFÉ TABLE



X-BASE BAR HEIGHT TABLE WITH
POWDER COATED FOOT-RING

ORDERING INFORMATION

- | | |
|-----------------|-------------------------------|
| 1) Series Name | 6) Laminate Selection and No. |
| 2) Model Number | 7) Edge Style Code and Color |
| 3) Size | 8) Wood Species |
| 4) Quantity | 9) Wood Stain Color |
| 5) Frame Color | 10) Optional Items |

TURNER CAFÉ BASE SPECIFICATIONS

Turner X Base

- Table Height** Table height is 29" to 30" depending on table top specified. Bar Height table is 42".
- Column** 3" round 14 gauge steel tubing (X-base)
2" round 14 gauge steel tubing (T-base)
- Base** 1" x 2" 14 gauge steel straight rectangular tubing – 22", 26" or 32" spreads with metal welded end caps.
- Plate** 10" x 10" square • 12" X 12" square
14" X 14" square
- Glides** Manually adjustable zinc glides
- Assembly** Top plate is welded to the vertical column and the vertical column is welded to the horizontal base. No tie rod assembly. Base mounts to tabletop with ¼-20 x 1" machine screws into metal inserts in top.
- Finish** Choice of standard powder coat colors – See "Color Selections" brochure.

Flip-Top Mechanism

Aluminum die-cast top plate and aluminum housing with single handle cable release.

TABLE TOP SPECIFICATIONS

Table Tops

Table top core is CARB Phase I & Phase II Compliant. Laminate, wood veneer and phenolic backing are glued with water based adhesives.

FINISHES

Laminate/Veneer Selections

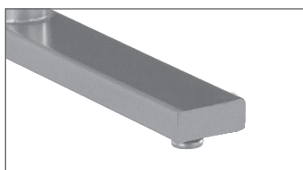
ERG offers over 1000 standard laminate choices from Nevamar, Wilsonart, Formica and Pionite. Wood veneer is available in transparent stain colors - custom stain matching available.

OPTIONS

- CODE: FLIP-X - Flip-Top per X-base (not available for 42" top)
- CODE: FLIP-T - Flip-Top for two T-legs
- CODE: RP - Painted Foot-ring for bar height
- CODE: STH - Special Table Height (any table height other than 29" or bar height)
- CODE: CAS3 - 3" Mobile Casters
- CODE: GD - Ganging
- CODE: ULW - Ultra Lightweight Top
- CODE: RAD - 3" Radius Corners for 3MM Edge
- CODE: FTBH – Flip top support bar for rectangular bar height tables (Maximum table top size 30x72)



BASE DETAIL



GLIDE
DETAIL



CASTER
DETAIL



FLIP-TOP
DETAIL

MODEL / DESCRIPTION / LIST PRICING

TURNER | CAFÉ | ROUND



Model Number	Table Top Size	Shpg. Wght.	Base Spread	LAMINATE TOP ASSORTED EDGES							VENEER TOP	
				GRP 1	GRP 2	GRP 3	GRP 4	GRP 5	GRP 6	GRP 7	GRP 8	GRP 9
TU24D	24" Dia.	32	22"- X	\$649	\$659	\$740	\$809	\$946	\$1059	\$1197	\$1692	\$1942
TU30D	30" Dia.	43	26"- X	\$716	\$732	\$838	\$929	\$1111	\$1262	\$1444	\$1927	\$2148
TU36D	36" Dia.	53	32"- X	\$884	\$903	\$1029	\$1140	\$1360	\$1543	\$1763	\$2371	\$2649
TU42D	42" Dia.	72	32"- X	\$1027	\$1051	\$1218	\$1360	\$1647	\$1886	\$2171	\$2812	\$3081

TURNER | CAFÉ | SQUARE



Model Number	Table Top Size	Shpg. Wght.	Base Spread	LAMINATE TOP ASSORTED EDGES							VENEER TOP	
				GRP 1	GRP 2	GRP 3	GRP 4	GRP 5	GRP 6	GRP 7	GRP 8	GRP 9
TU24S	24" Sq.	40	22"- X	\$656	\$669	\$752	\$823	\$965	\$1083	\$1226	\$1719	\$1966
TU2430S	24x30 Sq.	49	22"- X	\$698	\$711	\$807	\$889	\$1056	\$1196	\$1361	\$1853	\$2088
TU30S	30" Sq.	54	26"- X	\$720	\$737	\$843	\$933	\$1115	\$1267	\$1449	\$1940	\$2165
TU36S	36" Sq.	67	32"- X	\$896	\$913	\$1046	\$1159	\$1385	\$1574	\$1801	\$2406	\$2684

TURNER | CAFÉ | RECTANGLE



Model Number	Table Top Size	Shpg. Wght.	Base Spread	LAMINATE TOP ASSORTED EDGES							VENEER TOP	
				GRP 1	GRP 2	GRP 3	GRP 4	GRP 5	GRP 6	GRP 7	GRP 8	GRP 9
TU2448	24x48 Sq.	70	2-22"- T	\$819	\$838	\$961	\$1070	\$1283	\$1462	\$1675	\$2217	\$2458
TU2460	24x60 Sq.	79	2-22"- T	\$861	\$881	\$1021	\$1141	\$1381	\$1579	\$1819	\$2359	\$2587
TU3048	30x48 Sq.	84	2-22"- T	\$867	\$886	\$1028	\$1149	\$1391	\$1592	\$1836	\$2376	\$2601
TU3060	30x60 Sq.	90	2-22"- T	\$918	\$941	\$1100	\$1237	\$1509	\$1736	\$2009	\$2546	\$2756

TURNER | CAFÉ | BAR HEIGHT



Model Number	Table Top Size	Shpg. Wght.	Base Spread	LAMINATE TOP ASSORTED EDGES							VENEER TOP	
				GRP 1	GRP 2	GRP 3	GRP 4	GRP 5	GRP 6	GRP 7	GRP 8	GRP 9
TUH24D	24" Dia.	40	22"- X	\$812	\$824	\$904	\$971	\$1110	\$1223	\$1360	\$2050	\$2429
TUH30D	30" Dia.	53	26"- X	\$880	\$896	\$1001	\$1092	\$1274	\$1425	\$1608	\$2288	\$2636
TUH36D	36" Dia.	63	32"- X	\$1037	\$1054	\$1183	\$1293	\$1513	\$1696	\$1915	\$2704	\$3104
TUH36S	36" Sq.	67	32"- X	\$1102	\$1121	\$1252	\$1365	\$1591	\$1781	\$2007	\$2860	\$3299

Note: FTBH option is required with STH option when ordering rectangle flip-top tables over 29" table height.

OPTIONS

Add upcharge to list price and code to model number

RP	Painted Foot-ring for Bar Height	\$110
STH	Special Table Height (other than 29" or bar height)	\$150 per base
CAS3	3" Mobile Casters (2 Casters per leg)	\$25 each
GD	Ganging per table	\$95
FLIP-X	Flip-Top per X-base (up to 42" top maximum)	\$125

FLIP-T	Flip-Top for two T-legs	\$358
ULW	Ultra Lightweight Top	\$190
RAD	3" Radius Corners for 3MM Edge	\$200 per table
FTBH	All t-base bar height tables with flip top	\$300



T-LEG TRAINING TABLE



T-LEG TRAINING TABLE WITH FLIP-TOP

ORDERING INFORMATION

- | | |
|-----------------|-------------------------------|
| 1) Series Name | 6) Laminate Selection and No. |
| 2) Model Number | 7) Edge Style Code and Color |
| 3) Size | 8) Wood Stain Color |
| 4) Quantity | 9) Optional Items |
| 5) Frame Color | |

TURNER TRAINING BASE SPECIFICATIONS

Turner T Base

Table Height	Table height is 29" to 30" depending on table top specified.
Column	2" round 14 gauge steel tubing (T-base)
Base	1" x 2" 14 gauge steel straight rectangular tubing 16" 22", 26" spreads with metal welded end caps.
Plate	8" x 8" square 12 gauge stamped steel 2" x 4" 12 gauge stamped steel (Flip-Top or Folding).
Glides	Manually adjustable zinc glides
Assembly	Top plate is welded to the vertical column and the vertical column is welded to the horizontal base plate. No tie rod assembly. Base mounts to tabletop with 1/4-20 x 1" machine screws into metal inserts in top. Stretcher steel bars are used on tops over 72" long.
Finish	Choice of standard powder coat colors – See "Color Selections" brochure.

Flip-Top Mechanism

Aluminum die-cast top plate and aluminum housing with single handle cable release.

Folding Mechanism

Nylon injection molded housing, cast aluminum pivot and metal locking slider. Rigid, taper locking design is activated by single lever that also locks in folded position.

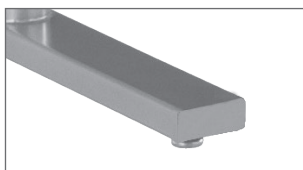
TABLE TOP SPECIFICATIONS

Table Tops

Table top core is CARB Phase I & Phase II Compliant. Laminate, wood veneer and phenolic backing are glued with water based adhesives.

Ultra-Lightweight Table Tops

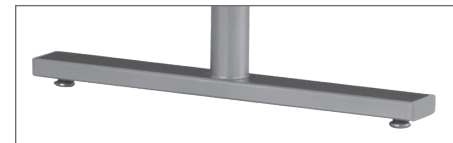
Ultra-lightweight tables have an exceptionally strong manufactured MDF top made from 100% recovered and recycled wood fiber with at least 25% post-industrial recycled fiber; the balance consisting of recovered waste fiber. Ultra-light tables are 18% lighter than standard tables.



GLIDE
DETAIL



CASTER
DETAIL



LEG DETAIL



FLIP-TOP
DETAIL

FINISHES

Laminate/Veneer Selections

ERG offers over 1000 standard laminate choices from Nevamar, Wilsonart, Formica and Pionite. Wood veneer is available in transparent stain colors - custom stain matching available.

Edge Selections:

ERG offers a wide variety of table top edge materials including PVC, wood, aluminum and resin/urethane.

Special Edge Note: When ganging or butting tables together, ERG recommends using 3MM flat edge or flat wood edge. Square tables using PVC T-MOLD edge will have a 2" radius on all corners. Table Bases and Legs

OPTIONS

- CODE: FLIP-T - Flip-Top per table
- CODE: ASB - Anti-Sag Bar for tables under 72"
- CODE: FOLD - Lightweight Folding Leg Mechanism per table
- CODE: STH - Special Table Height (any table height other than 29")
- CODE: ULW - Ultra-lightweight table top
- CODE: CAS3 - 3" Mobile Casters
- CODE: GD - Ganging per table
- CODE: RAD - 3" Radius Corners for 3MM Edge
- CODE: FTBH - Flip top support bar for rectangular bar height tables
(Maximum table top size 30x72)
- TABLE ACCESSORIES - Modesty Panels, Bridges, Grommets, Wire Management, Power & Communication Options, Table Dollies - see accessories online under the 'Products' tab

Note: When ordering modesty panel, table and panel must have 3MM edge.

MODEL / DESCRIPTION / LIST PRICING

TURNER | RECTANGLE

Model Number	Table Top Size	Shpg. Wght.	Base Spread	LAMINATE TOP ASSORTED EDGES							VENEER TOP	
				GRP 1	GRP 2	GRP 3	GRP 4	GRP 5	GRP 6	GRP 7	GRP 8	GRP 9
TU1836	18 X 36	54	2-16"- T	\$719	\$734	\$824	\$900	\$1054	\$1184	\$1337	\$1882	\$2158
TU1848	18 X 48	61	2-16"- T	\$754	\$768	\$871	\$957	\$1133	\$1277	\$1451	\$1995	\$2260
TU1860	18 X 60	68	2-16"- T	\$787	\$803	\$918	\$1015	\$1209	\$1370	\$1565	\$2107	\$2359
TU1872	18 X 72	75	2-16"- T	\$930	\$947	\$1073	\$1180	\$1394	\$1574	\$1788	\$2459	\$2785
TU1884	18 X 84	81	2-16"- T	\$984	\$1004	\$1150	\$1274	\$1522	\$1728	\$1975	\$2643	\$2952
TU1896	18 X 96	88	2-16"- T	\$1045	\$1067	\$1223	\$1357	\$1625	\$1849	\$2116	\$2815	\$3135
TU2436	24 X 36	61	2-22"- T	\$777	\$794	\$904	\$997	\$1186	\$1342	\$1533	\$2075	\$2330
TU2448	24 X 48	70	2-22"- T	\$819	\$838	\$961	\$1070	\$1283	\$1462	\$1675	\$2217	\$2458
TU2460	24 X 60	79	2-22"- T	\$861	\$881	\$1021	\$1141	\$1381	\$1579	\$1819	\$2359	\$2587
TU2472	24 X 72	88	2-22"- T	\$1014	\$1033	\$1189	\$1323	\$1587	\$1807	\$2072	\$2741	\$3039
TU2484	24 X 84	97	2-22"- T	\$1077	\$1103	\$1279	\$1430	\$1734	\$1986	\$2290	\$2956	\$3232
TU2496	24 X 96	106	2-22"- T	\$1146	\$1173	\$1365	\$1529	\$1858	\$2132	\$2459	\$3158	\$3441
TU3036	30 X 36	68	2-22"- T	\$815	\$833	\$957	\$1062	\$1274	\$1451	\$1663	\$2204	\$2446
TU3048	30 X 48	84	2-22"- T	\$867	\$886	\$1028	\$1149	\$1391	\$1592	\$1836	\$2376	\$2601
TU3060	30 X 60	90	2-22"- T	\$918	\$941	\$1100	\$1237	\$1509	\$1736	\$2009	\$2546	\$2756
TU3072	30 X 72	102	2-22"- T	\$1078	\$1103	\$1280	\$1432	\$1735	\$1988	\$2291	\$2957	\$3235
TU3084	30 X 84	113	2-26"- T	\$1151	\$1180	\$1383	\$1555	\$1902	\$2192	\$2541	\$3202	\$3454
TU3096	30 X 96	124	2-26"- T	\$1230	\$1260	\$1480	\$1670	\$2047	\$2362	\$2741	\$3434	\$3690
TU3648	36 X 48	88	2-26"- T	\$925	\$948	\$1110	\$1247	\$1525	\$1756	\$2033	\$2570	\$2776
TU3660	36 X 60	102	2-26"- T	\$984	\$1010	\$1194	\$1351	\$1663	\$1924	\$2236	\$2771	\$2957
TU3672	36 X 72	115	2-26"- T	\$1153	\$1183	\$1386	\$1560	\$1909	\$2200	\$2548	\$3212	\$3462
TU3684	36 X 84	129	2-26"- T	\$1236	\$1268	\$1500	\$1699	\$2097	\$2429	\$2826	\$3486	\$3710
TU3696	36 X 96	142	2-26"- T	\$1323	\$1358	\$1612	\$1829	\$2262	\$2624	\$3057	\$3746	\$3972

TURNER | SECTIONAL | HALF ROUND

Model Number	Table Top Size	Shpg. Wght.	Base Spread	LAMINATE TOP ASSORTED EDGES							VENEER TOP	
				GRP 1	GRP 2	GRP 3	GRP 4	GRP 5	GRP 6	GRP 7	GRP 8	GRP 9
TUHR2448	24 X 48	70	2-16T	\$1098	\$1128	\$1353	\$1541	\$1923	\$2239	\$2620	\$3150	\$3299
TUHR3060	30 X 60	90	2-22T	\$1187	\$1223	\$1477	\$1695	\$2129	\$2493	\$2927	\$3453	\$3570
TUHR3672	36 X 72	115	2-26T	\$1415	\$1456	\$1753	\$2006	\$2510	\$2932	\$3437	\$4090	\$4253

Note: FTBH option is required with STH option when ordering rectangle flip-top tables over 29" table height.

OPTIONS

Add upcharge to list price and code to model number

FLIP-T	Flip-Top for two t-legs	\$358
ASB	Anti-Sag Bar for tables under 72"	\$80
FOLD	Lightweight Folding Leg Mechanism per table	\$298
STH	Special Table Height (other than 29")	\$150 per leg
ULW	Ultra-lightweight table top	\$190

CAS3	3" Mobile Casters (2 Casters per leg)	\$25 each
GD	Ganging per table	\$95
RAD	3" Radius Corners for 3MM Edge	\$200 per table
FTBH	All t-base bar height tables with flip top	\$300