

**ABBY**

Abby collection of café and training tables offers the ability to sit-and-stand at your table while you work. The options include flip tops, casters and radius corners. With its adjustable height and modern design, this high-tech look is a perfect fit for any mobile training space.



ROUND CAFÉ TABLE



TRAINING TABLE

**ORDERING INFORMATION**

- 1) Series Name
- 2) Model Number
- 3) Size
- 4) Quantity
- 5) Powder Coat Frame Color
- 6) Laminate Selection and No.
- 7) Edge Style Code and Color
- 8) Optional Items

**BASE SPECIFICATIONS**

**Table Height:** Optional adjustable height varies depending on adjustment method specified. Pin or Pneumatic adjustment available on X-Base or T-Base tables.

**Column:** 3" square 14 gauge steel tubing welded to base and top plate

**X-Base:** 1.25", 14 gauge round tubular steel and .1875" flat plate steel

**T-Base:** Fully welded steel legs with modern design

**Top Plate:** 8" x 8" plate welded to column

**Glides:** 2" adjustable black plastic glides

**Assembly:** Top plate is welded to the vertical column and the vertical column is welded to the horizontal base. No tie rod assembly. Base mounts to tabletop with ¼-20 x 1" machine screws into metal inserts in top.

**STANDARD BASE FINISHES**

**X-Base & T-Base: Standard Powder Coat**

- ERG Brushed Aluminum
- ERG Argento Metallic

**TABLE TOP SPECIFICATIONS**

**Table Tops**

Table top core is CARB Phase I & Phase II Compliant. Laminate, wood veneer and phenolic backing are glued with water based adhesives.

**COLOR / EDGE SELECTIONS**

**Laminate/Veneer Selections**

ERG offers over 1000 standard laminate choices from Nevamar, Wilsonart, Formica and Pionite. Wood veneer is available in transparent stain colors - custom stain matching available for an upcharge.

**Edge Selections**

ERG offers a wide variety of table top edge materials including PVC, wood, aluminum and resin/urethane. Special Edge Note: When ganging or butting tables together, ERG recommends using 3MM flat edge or flat wood edge. Square tables using **T-MOLD** edge will have a 3" radius on all corners.

**OPTIONS**

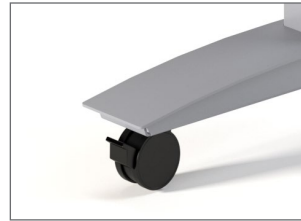
- CODE: FLIP-X - Flip Top per X-base (can not be used with height adjustable tables)
- CODE: FLIP-T - Flip Top for two T-Legs
- CODE: CAS2 - 2" Locking Casters - Black
- CODE: DCL - C-Legs instead of T-Legs  
(Adjustable height options not available on C-Legs)
- CODE: GD3 - Flat Ganging Device for Café & Training Tables
- CODE: RAD - 3" Radius Corners for 3MM Edge
- CODE: ASB - Anti-Sag Bar for Tables Under 72"
- CODE: PINLT - Pin Height Adjustment for T-Legs
- CODE: PINLA - Pin Height Adjustment for X-Base
- CODE: PNEUX - Pneumatic Height Adjustment for X-Base
- CODE: HCA - Hand Crank Height Adjustment for T-Legs
- CODE: EPLA - Electric Height Adjustment for T-Legs



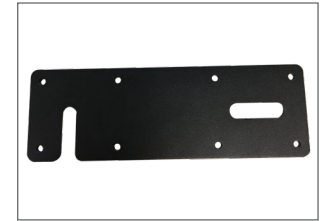
FLIP TOP FOR X BASE



FLIP TOP FOR TWO T-LEGS



2" MOBILE CASTERS



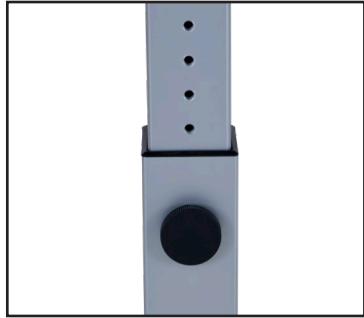
FLAT GANGING DEVICE

**Notes:**

**Flip-Top Mechanism**

Durable all-steel construction with a spring-loaded release handle and a safety catch to maintain flipped-up position. **All flip-top tables must have casters.**

**PIN HEIGHT ADJUSTMENT OPTION**



PIN HEIGHT ADJUSTMENT  
DETAIL



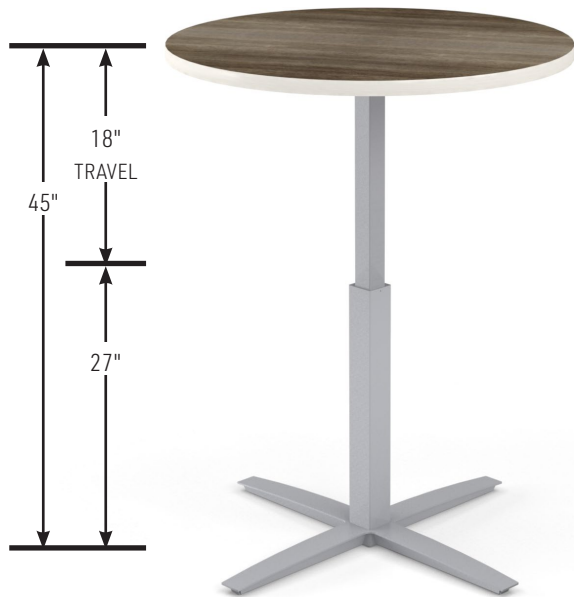
CAFÉ TABLE WITH OPTIONAL  
PIN HEIGHT ADJUSTMENT



NOTE: Pneumatic / Flip can not be used on same table

NOTE: HEIGHT INCLUDES 1.25" TABLE TOP.  
CASTERS WILL ADD 2" TO HEIGHT.

**PNEUMATIC HEIGHT ADJUSTMENT OPTION**



CAFÉ TABLE WITH OPTIONAL  
PNEUMATIC HEIGHT ADJUSTMENT



PNEUMATIC HEIGHT ADJUSTMENT  
LEVER DETAIL

NOTE: HEIGHT INCLUDES 1.25" TABLE TOP.  
CASTERS WILL ADD 2" TO HEIGHT.

NOTE: Pneumatic / Flip can not be used on same table

**HAND CRANK HEIGHT ADJUSTMENT OPTION**

NOTE: THE HAND CRANK OPTION IS NOT COMPATIBLE WITH THE FLIP TOP OPTION.



TRAINING TABLE WITH OPTIONAL HAND CRANK HEIGHT ADJUSTMENT

NOTE: HEIGHT INCLUDES 1.25" TABLE TOP

**ELECTRIC HEIGHT ADJUSTMENT OPTION**



NOTE: HEIGHT INCLUDES 1.25" TABLE TOP

TRAINING TABLE WITH OPTIONAL ELECTRIC HEIGHT ADJUSTMENT AND SNAP ON WIRE MANAGEMENT



ELECTRIC UP / DOWN CONTROL DETAIL



SQUARE CAFÉ TABLE

**MODEL / DESCRIPTION / LIST PRICING**

**ABBY|X-BASECAFÉ|ROUNDTOP**



ROUND

Model Number	Table Top Size	Base Spread	Table Height	Shpg. Wght.	LAMINATE TOP ASSORTED EDGES							VENEER TOP	
					GRP1	GRP2	GRP3	GRP4	GRP5	GRP6	GRP7	GRP8	GRP9
AB24D	24" Dia.	23"-X	29"	32	\$1404	\$1444	\$1591	\$1849	\$1868	\$2091	\$2355	\$3402	\$3953
AB30D	30" Dia.	29"-X	29"	43	\$1463	\$1504	\$1657	\$1926	\$1946	\$2178	\$2451	\$3543	\$4120
AB36D	36" Dia.	35"-X	29"	53	\$1649	\$1695	\$1882	\$2219	\$2239	\$2519	\$2851	\$4035	\$4648
AB42D	42" Dia.	35"-X	29"	72	\$1782	\$1840	\$2072	\$2500	\$2520	\$2862	\$3273	\$4448	\$5013

**ABBY | X-BASE CAFÉ | SQUARE TOP**



SQUARE

Model Number	Table Top Size	Base Spread	Table Height	Shpg. Wght.	LAMINATE TOP ASSORTED EDGES							VENEER TOP	
					GRP 1	GRP 2	GRP 3	GRP 4	GRP 5	GRP 6	GRP 7	GRP 8	GRP 9
AB24S	24" Sq.	23"- X	29"	40	\$1404	\$1444	\$1591	\$1849	\$1868	\$2091	\$2355	\$3402	\$3953
AB2430S	24" x 30"	29"- X	29"	49	\$1389	\$1422	\$1559	\$1787	\$1806	\$2010	\$2255	\$3327	\$3910
AB30S	30" Sq.	29"- X	29"	54	\$1463	\$1504	\$1657	\$1926	\$1946	\$2178	\$2451	\$3543	\$4120
AB36S	36" Sq.	35"- X	29"	67	\$1664	\$1717	\$1908	\$2256	\$2276	\$2563	\$2908	\$4089	\$4692
AB42S	42" Sq.	35"- X	29"	90	\$1691	\$1747	\$1970	\$2382	\$2401	\$2733	\$3127	\$4229	\$4757

NOTE: Flip-top can only be ordered with casters

NOTE: Flip-top X- base tables with casters in bar & counter height max 36" D or 36" S

NOTE: Pneumatic / Flip can not be used on same table

NOTE: AB24D and AB24S cannot be offered with the pin height

**OPTIONS**

Add upcharge to list price and code to model number

FLIP-X	Flip-Top per X-base (up to 42" top maximum)	\$211	per table
CAS2	2" Locking Casters - Black	\$29	ea.
GD3	Flat Ganging Device for Café & Training Tables	\$150	per pair
RAD	3" Radius Corners for 3MM Edge	\$272	per table

PINLA	Pin Height Adjust (X-Base)	\$224	per table
PNEUX	Pneumatic Height Adjust (X-Base, Max 36D/36S)	\$853	per table



**MODEL / DESCRIPTION / LIST PRICING**

**ABBY|TRAINING|T-LEGS|RECTANGLETOP**

**RECTANGLE**

Model Number	Table Top Size	Table Height	Base Spread	Shpg. Wght.	LAMINATE TOP ASSORTED EDGES								VENEER TOP	
					GRP1	GRP2	GRP3	GRP4	GRP5	GRP6	GRP7	GRP8	GRP9	
AB2448	24X48	29"	23"-T	70	\$1934	\$2036	\$2214	\$2511	\$2531	\$2800	\$3120	\$4680	\$5535	
AB2460	24X60	29"	23"-T	79	\$2022	\$2136	\$2338	\$2694	\$2714	\$3017	\$3381	\$4960	\$5798	
AB2472	24X72	29"	23"-T	88	\$2137	\$2258	\$2490	\$2908	\$2927	\$3275	\$3694	\$5292	\$6123	
AB2484	24X84	29"	23"-T	97	\$2409	\$2544	\$2806	\$3275	\$3295	\$3689	\$4157	\$5958	\$6899	
AB3048	30X48	29"	29"-T	79	\$2052	\$2163	\$2367	\$2715	\$2735	\$3037	\$3396	\$5012	\$5882	
AB3060	30X60	29"	29"-T	90	\$2169	\$2293	\$2529	\$2951	\$2970	\$3320	\$3742	\$5370	\$6216	
AB3072	30X72	29"	29"-T	102	\$2277	\$2411	\$2675	\$3157	\$3176	\$3566	\$4036	\$5688	\$6530	
AB3084	30X84	29"	29"-T	113	\$2631	\$2791	\$3105	\$3694	\$3714	\$4186	\$4753	\$6612	\$7542	

NOTE: Flip-top can only be ordered with casters

NOTE: Fliptop tables with casters in counter & bar height available in depth ranges 24"-36" only  
Max Length up 72" - Not available with C-legs

NOTE: Pneumatic / Flip can not be used on same table

NOTE: Casters will be 1.5" on X-Base with Flip Top

**OPTIONS**

Add upcharge to list price and code to model number

FLIP-T	Flip-Top for two T-legs	\$487	per table
ASB	Anti-Sag Bar for tables under 72"	\$109	per table
CAS2	2" Locking Casters - Black	\$29	ea.
DCL	C-Legs instead of T-Legs	\$82	per table
GD3	Flat Ganging Device for Café & Training Tables	\$150	per pair

RAD	3" Radius Corners for 3 MM Edge	\$272	per table
PINLT	Pin Height Adjust (T-Legs)	\$387	per table
HCA	Hand Crank Height Adjust (T-Legs)	\$735	per table
EPLA	Electric Height Adjust (T-Legs)	\$1476	per table