

ABBY

Abby collection of café and training tables offers the ability to sit-and-stand at your table while you work. The options include flip tops, casters and radius corners. With its adjustable height and modern design, this high-tech look is a perfect fit for any mobile training space.



ROUND CAFÉ TABLE



TRAINING TABLE

ORDERING INFORMATION

- 1) Series Name
- 2) Model Number
- 3) Size
- 4) Quantity
- 5) Powder Coat Frame Color
- 6) Laminate Selection and No.
- 7) Edge Style Code and Color
- 8) Optional Items

BASE SPECIFICATIONS

Table Height: Optional adjustable height varies depending on adjustment method specified. Pin or Pneumatic adjustment available on X-Base or T-Base tables.

Column: 3" square 14 gauge steel tubing welded to base and top plate

X-Base: 1.25", 14 gauge round tubular steel and .1875" flat plate steel

T-Base: Fully welded steel legs with modern design

Top Plate: 8" x 8" plate welded to column

Glides: 2" adjustable black plastic glides

Assembly: Top plate is welded to the vertical column and the vertical column is welded to the horizontal base. No tie rod assembly. Base mounts to tabletop with 1/4"-20 x 1" machine screws into metal inserts in top.

STANDARD BASE FINISHES

X-Base & T-Base: Standard Powder Coat

- ERG Brushed Aluminum
- ERG Argento Metallic

TABLE TOP SPECIFICATIONS

Table Tops

Table top core is CARB Phase I & Phase II Compliant. Laminate, wood veneer and phenolic backing are glued with water based adhesives.

COLOR / EDGE SELECTIONS

Laminate/Veneer Selections

ERG offers over 1000 standard laminate choices from Nevamar, Wilsonart, Formica and Pionite. Wood veneer is available in transparent stain colors - custom stain matching available for an upcharge.

Edge Selections

ERG offers a wide variety of table top edge materials including PVC, wood, aluminum and resin/urethane. Special Edge Note: When ganging or butting tables together, ERG recommends using 3MM flat edge or flat wood edge. Square tables using T-MOLD edge will have a 3" radius on all corners.

OPTIONS

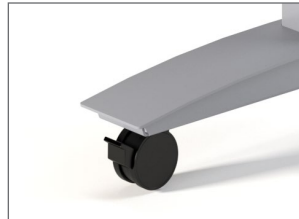
- CODE: FLIP-X - Flip Top per X-base (can not be used with height adjustable tables)
- CODE: FLIP-T - Flip Top for two T-Legs
- CODE: CAS2 - 2" Locking Casters - Black
- CODE: DCL - C-Legs instead of T-Legs
(Adjustable height options not available on C-Legs)
- CODE: GD3 - Flat Ganging Device for Café & Training Tables
- CODE: RAD - 3" Radius Corners for 3MM Edge
- CODE: ASB - Anti-Sag Bar for Tables Under 72"
- CODE: PINLT - Pin Height Adjustment for T-Legs
- CODE: PINLA - Pin Height Adjustment for X-Base
- CODE: PNEUX - Pneumatic Height Adjustment for X-Base
- CODE: HCA - Hand Crank Height Adjustment for T-Legs
- CODE: EPLA - Electric Height Adjustment for T-Legs



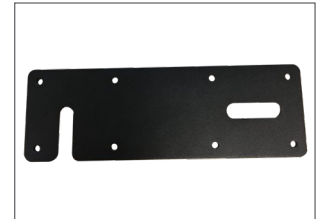
FLIP TOP FOR X BASE



FLIP TOP FOR TWO T-LEGS



2" MOBILE CASTERS



FLAT GANGING DEVICE

Notes:

Flip-Top Mechanism

Durable all-steel construction with a spring-loaded release handle and a safety catch to maintain flipped-up position. **All flip-top tables must have casters.**

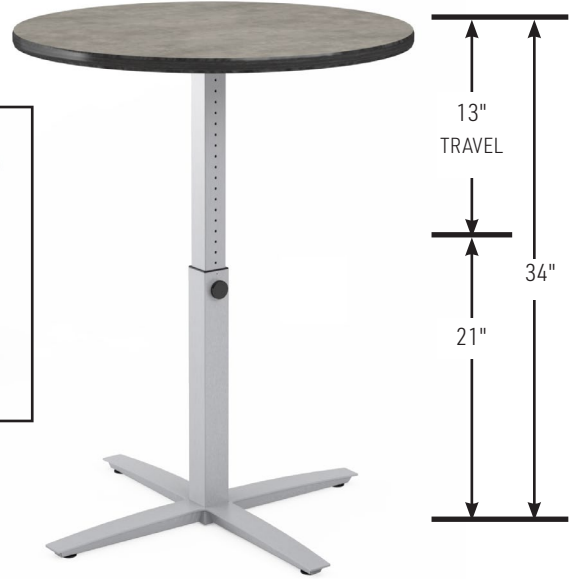
PIN HEIGHT ADJUSTMENT OPTION



PIN HEIGHT ADJUSTMENT
DETAIL



CAFÉ TABLE WITH OPTIONAL
PIN HEIGHT ADJUSTMENT



NOTE: Pneumatic / Flip can not be used on same table

NOTE: HEIGHT INCLUDES 1.25" TABLE TOP.
CASTERS WILL ADD 2" TO HEIGHT.

PNEUMATIC HEIGHT ADJUSTMENT OPTION



CAFÉ TABLE WITH OPTIONAL
PNEUMATIC HEIGHT ADJUSTMENT



PNEUMATIC HEIGHT ADJUSTMENT
LEVER DETAIL

NOTE: HEIGHT INCLUDES 1.25" TABLE TOP.
CASTERS WILL ADD 2" TO HEIGHT.

NOTE: Pneumatic / Flip can not be used on same table

HAND CRANK HEIGHT ADJUSTMENT OPTION

NOTE: THE HAND CRANK OPTION IS NOT COMPATIBLE WITH THE FLIP TOP OPTION.



TRAINING TABLE WITH OPTIONAL HAND CRANK HEIGHT ADJUSTMENT

NOTE: HEIGHT INCLUDES 1.25" TABLE TOP

ELECTRIC HEIGHT ADJUSTMENT OPTION



NOTE: HEIGHT INCLUDES 1.25" TABLE TOP

TRAINING TABLE WITH OPTIONAL ELECTRIC HEIGHT ADJUSTMENT AND SNAP ON WIRE MANAGEMENT



ELECTRIC UP / DOWN CONTROL DETAIL



SQUARE CAFÉ TABLE

MODEL / DESCRIPTION / LIST PRICING

ABBY|X-BASECAFÉ|ROUNDTOP



ROUND

Model Number	Table Top Size	Base Spread	Table Height	Shpg. Wght.	LAMINATE TOP ASSORTED EDGES							VENEER TOP	
					GRP1	GRP2	GRP3	GRP4	GRP5	GRP6	GRP7	GRP8	GRP9
AB24D	24" Dia.	23"-X	29"	32	\$1516	\$1560	\$1718	\$1997	\$2017	\$2258	\$2543	\$3674	\$4269
AB30D	30" Dia.	29"-X	29"	43	\$1580	\$1624	\$1790	\$2080	\$2102	\$2352	\$2647	\$3826	\$4450
AB36D	36" Dia.	35"-X	29"	53	\$1781	\$1831	\$2033	\$2397	\$2418	\$2721	\$3079	\$4358	\$5020
AB42D	42" Dia.	35"-X	29"	72	\$1925	\$1987	\$2238	\$2700	\$2722	\$3091	\$3535	\$4804	\$5414

ABBY | X-BASE CAFÉ | SQUARE TOP



SQUARE

Model Number	Table Top Size	Base Spread	Table Height	Shpg. Wght.	LAMINATE TOP ASSORTED EDGES							VENEER TOP	
					GRP 1	GRP 2	GRP 3	GRP 4	GRP 5	GRP 6	GRP 7	GRP 8	GRP 9
AB24S	24" Sq.	23"- X	29"	40	\$1516	\$1560	\$1718	\$1997	\$2017	\$2258	\$2543	\$3674	\$4269
AB2430S	24" x 30"	29"- X	29"	49	\$1500	\$1536	\$1684	\$1930	\$1950	\$2171	\$2435	\$3593	\$4223
AB30S	30" Sq.	29"- X	29"	54	\$1580	\$1624	\$1790	\$2080	\$2102	\$2352	\$2647	\$3826	\$4450
AB36S	36" Sq.	35"- X	29"	67	\$1797	\$1854	\$2061	\$2436	\$2458	\$2768	\$3141	\$4416	\$5067
AB42S	42" Sq.	35"- X	29"	90	\$1826	\$1887	\$2128	\$2573	\$2593	\$2952	\$3377	\$4567	\$5138

NOTE: Flip-top can only be ordered with casters

NOTE: Flip-top X- base tables with casters in bar & counter height max 36" D or 36" S

NOTE: Pneumatic / Flip can not be used on same table

NOTE: AB24D and AB24S cannot be offered with the pin height

OPTIONS

Add upcharge to list price and code to model number

FLIP-X	Flip-Top per X-base (up to 42" top maximum)	\$219	per table
CAS2	2" Locking Casters - Black	\$30	ea.
GD3	Flat Ganging Device for Café & Training Tables	\$156	per pair
RAD	3" Radius Corners for 3MM Edge	\$283	per table

PINLA	Pin Height Adjust (X-Base)	\$233	per table
PNEUX	Pneumatic Height Adjust (X-Base, Max 36D/36S)	\$887	per table



MODEL / DESCRIPTION / LIST PRICING

ABBY|TRAINING|T-LEGS|RECTANGLETOP

RECTANGLE

Model Number	Table Top Size	Table Height	Base Spread	Shpg. Wght.	LAMINATE TOP ASSORTED EDGES								VENEER TOP	
					GRP1	GRP2	GRP3	GRP4	GRP5	GRP6	GRP7	GRP8	GRP9	
AB2448	24X48	29"	23"-T	70	\$2089	\$2199	\$2391	\$2712	\$2733	\$3024	\$3370	\$5054	\$5978	
AB2460	24X60	29"	23"-T	79	\$2184	\$2307	\$2525	\$2910	\$2931	\$3258	\$3651	\$5357	\$6262	
AB2472	24X72	29"	23"-T	88	\$2308	\$2439	\$2689	\$3141	\$3161	\$3537	\$3990	\$5715	\$6613	
AB2484	24X84	29"	23"-T	97	\$2602	\$2748	\$3030	\$3537	\$3559	\$3984	\$4490	\$6435	\$7451	
AB3048	30X48	29"	29"-T	79	\$2216	\$2336	\$2556	\$2932	\$2954	\$3280	\$3668	\$5413	\$6353	
AB3060	30X60	29"	29"-T	90	\$2343	\$2476	\$2731	\$3187	\$3208	\$3586	\$4041	\$5800	\$6713	
AB3072	30X72	29"	29"-T	102	\$2459	\$2604	\$2889	\$3410	\$3430	\$3851	\$4359	\$6143	\$7052	
AB3084	30X84	29"	29"-T	113	\$2841	\$3014	\$3353	\$3990	\$4011	\$4521	\$5133	\$7141	\$8145	

NOTE: Flip-top can only be ordered with casters

NOTE: Fliptop tables with casters in counter & bar height available in depth ranges 24"-36" only
Max Length up 72" - Not available with C-legs

NOTE: Pneumatic / Flip can not be used on same table

NOTE: Casters will be 1.5" on X-Base with Flip Top

OPTIONS

Add upcharge to list price and code to model number

FLIP-T	Flip-Top for two T-legs	\$506	per table
ASB	Anti-Sag Bar for tables under 72"	\$113	per table
CAS2	2" Locking Casters - Black	\$30	ea.
DCL	C-Legs instead of T-Legs	\$85	per table
GD3	Flat Ganging Device for Café & Training Tables	\$156	per pair

RAD	3" Radius Corners for 3 MM Edge	\$283	per table
PINLT	Pin Height Adjust (T-Legs)	\$402	per table
HCA	Hand Crank Height Adjust (T-Legs)	\$764	per table
EPLA	Electric Height Adjust (T-Legs)	\$1535	per table