



CAPRI

Capri is the perfect portable tablet table for casual work. Take this simple table and move around your environment for easy transporting anywhere. It offers six classic tabletop shapes and two base shapes, to suit the need of a casual rest stop.



ROUNDED ENDS METAL BASE
WITH CAP102 TOP



RECTANGLE METAL BASE WITH
CAP105 TOP

ORDERING INFORMATION

- | | |
|-----------------|------------------|
| 1) Series Name | 4) Frame Finish |
| 2) Model Number | 5) Top Selection |
| 3) Quantity | |

BASE SPECIFICATIONS

Frame

The Capri features a fully welded 1.25" dia. steel tube column with a solid steel base. Base is available in two shapes - rectangle and rounded ends.

Glides

Black Vinyl Glides

STANDARD BASE FINISHES

Rectangle Metal Base: Standard Powder Coat

Rounded Ends Metal Base: Standard Powder Coat

TABLE TOP SPECIFICATIONS

Table Tops

Table tops offered for the Capri include 0.75" Laminate/Veneer with exposed multi-ply edge or 0.5" Solid Surface.

Table Shapes

Tables are available in 6 shapes (3 per base).

See dimensions on following pages for all table top sizes.

COLOR / EDGE SELECTIONS

Veneer

Real wood, real character. We select our standard Rift Cut White Oak veneer for it's warm, natural appearance and distinctive grain. No sameness here - each piece shows variation in color and grain, highlighting the authenticity of real wood. Our transparent stains preserve the grain's depth and a zero-sheen top coat creates a smooth natural matte finish.

Laminate

Standard laminate top with exposed multi-ply edge available in:

Wilsonart Black 1595-60

Formica Brite White 459-58

Formica Swede Rift Oak 8676-26

Wilsonart Florence Walnut 7993-38

Edge

Exposed Multi-ply Edge

Solid Surface

Stock solid surface top is available in:

Corian Bone & Glacier White

Other Laminates and surfaces available with minimum quantities.

OPTIONS

- CODE: LAM5 - Non-standard laminate for 5 or less tablets
see options for upcharge
- CODE: SS5 - Non-standard Solid Surface top for 5 or less tablets



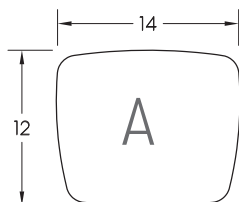
ROUNDED ENDS METAL BASE



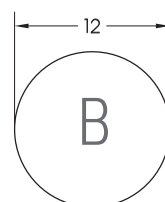
ROUNDED ENDS METAL BASE
WITH CAP101 TOP

MODEL / DESCRIPTION / LIST PRICING

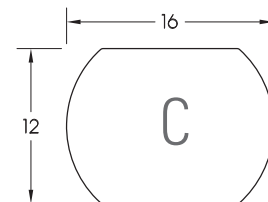
	Model Number	Model Description	Table Height	Shipping Weight	MULTI-PLY LAMINATE TOP	veneER TOP	SOLID SURFACE TOP
					EDGE 6F	EDGE 8F	+SS
	CAP101	Pull-Up	26"	28 lbs.	\$1116	\$1237	\$1924
	CAP102	Pull-Up	26"	28 lbs.	\$1116	\$1237	\$1924
	CAP103	Pull-Up	26"	28 lbs.	\$1116	\$1237	\$1924



ALMOST SQUARE



ROUND

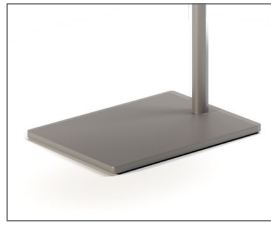


ROUNDED ENDS

OPTIONS

Add upcharge to list price and code to model number

LAM5	Non-standard laminate (5 tablets or less)	\$599	ea. tablet	SS5	Non-standard Solid Surface (5 tablets or less)	Call For Quote
------	---	-------	------------	-----	--	----------------

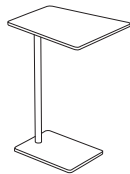


RECTANGLE METAL BASE

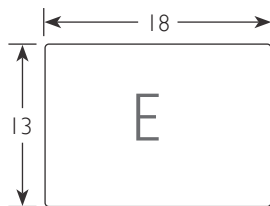


RECTANGLE METAL BASE WITH
CAP104 TOP

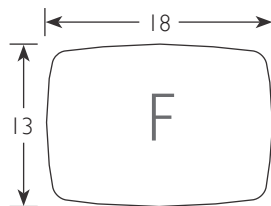
MODEL / DESCRIPTION / LIST PRICING



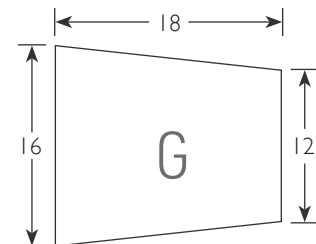
Model Number	Model Description	Table Height	Shipping Weight	MULTI-PLY LAMINATE TOP	VENEER TOP	SOLID SURFACE TOP
				EDGE 6F	EDGE 8F	+SS
CAP104	Pull-Up	26"	28 lbs.	\$1116	\$1237	\$1924
CAP105	Pull-Up	26"	28 lbs.	\$1116	\$1237	\$1924
CAP106	Pull-Up	26"	28 lbs.	\$1116	\$1237	\$1924



RECTANGLE



ALMOST
RECTANGLE



TRAPEZOID

OPTIONS

Add upcharge to list price and code to model number

LAM5	Non-standard laminate (5 tablets or less)	\$599	ea. tablet	SS5	Non-standard Solid Surface (5 tablets or less)	Call For Quote
------	---	-------	------------	-----	--	----------------