

DAYLEN

Designed by Gemma Bernal

Say hello to the Daylen collection! This trendy set includes a cozy lounge chair, ottomans, and upholstered tables. Daylen is all about comfort and style with its soft, rounded designs. The armless lounge chair can be a standout piece on its own or mix and match with other items for a bold statement. Perfect for offices and campus hangouts, Daylen seamlessly combines practicality and beauty to create welcoming spaces for both work and play.



SINGLE LOUNGE



OTTOMAN



OTTOMAN W/LAMINATE TOP

ORDERING INFORMATION

To Order Please Specify:

- 1) Series Name
- 2) Model Number
- 3) Quantity
- 4) Fabric Grade and Number
- 5) Optional Items

GENERAL SPECIFICATIONS

Upholstery/Foam

All foam is fully bonded to frame. Seat cushions are 4" graded high resiliency (H.R.) block foam with back 3" (H.R.) foam, covered entirely with special bonded polyester fiber to protect final upholstery.

Graded-In & COM Fabric Testing

Due to the complexity of the upholstery process, please submit your Graded-in/COM for testing. A 10"x10" sample is required. **ALL FABRIC MUST BE PRE APPROVED.** Please see Approved Fabrics link under product webpage images.

Frame

Multi-ply hardwood
Tongue and groove construction nailed and glued

Glides

Nylon glides

Pull Handles

Spinney Beck Belting Leather, bolted into the frame with a single top stitch

Casters

2" Concealed self locking caster, casters lock when in use

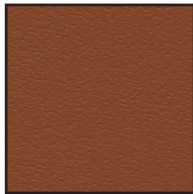
OPTIONS

- CODE: FR - CAL 133 (TB 133) Fire Retardant
- CODE: MB - Moisture Barrier (1"-59"width)
- CODE: 2FO - Two Fabric Option
- CODE: PHNDL-D - Leather Pull Handle
- CODE: CAS2-CSL - 2" Concealed self locking caster

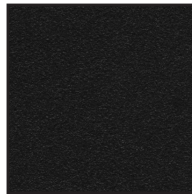
PULL HANDLE: LEATHER COLOR OPTIONS



CREAM



COGNAC



BLACK

PULL HANDLE: BUTTON OPTIONS



OYSTER



NICKEL



GILT

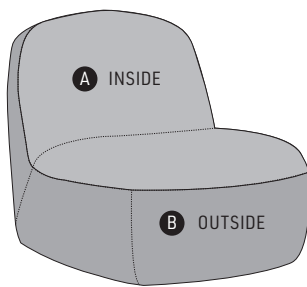


BLACK MATTE



PULL HANDLE SHOWN IN
COGNAC LEATHER & GILT BUTTONS

FABRIC OPTIONS



2 FABRIC OPTION

DISCLAIMERS

DUE TO THE CURVES OF THIS CHAIR, IT MAY CAUSE WRINKLING IN THE UPHOLSTERY.

DIMENSIONS	Single Seat
Seat Height:	17.5"
Seat Depth:	21.5"
Overall Depth:	38"
Overall Width:	29"
Overall Height:	32"
Qty./Wt. per carton:	1 ea./54 lbs.



LOUNGE SEAT SHOWN WITH 2FO
FABRIC

MODEL / DESCRIPTION / LIST PRICING



2569 Club Lounge

COM Yardage Total: 4.5 Yds / Outside: 3 Yds / Inside: 1.5 Yds

COM	GR1	GR2	GR3	GR4	GR5	GR6	GR7	GR8	GR9	GR10	LEA
\$2592	\$2957	\$3097	\$3237	\$3397	\$3512	\$3692	\$3882	\$4002	\$4182	\$4362	\$4477

OPTIONS

Add upcharge to list price and code to model number

FR	CAL 133 (TB 133) Fire Retardant per yard	\$118	/yd.
MB	Moisture Barrier (1"-59"width)	\$164	ea.
2FO	Two Fabric Option	\$131	per unit

PHNDL-D	Leather Pull Handle	\$150	list
CAS2-CSL	2" Concealed self locking caster	\$43	ea.

DIMENSIONS	24" Ottoman	30" Ottoman	36" Ottoman
Overall Depth:	24"	30"	36"
Overall Width:	24"	30"	36"
Overall Height:	18"	18"	18"
Qty./Wt. per carton:	1 ea./19 lbs.	1 ea./24 lbs.	1 ea./29 lbs.

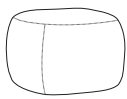


24" OTTOMAN



36" OTTOMAN

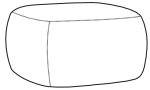
MODEL / DESCRIPTION / LIST PRICING



2571 24" Ottoman

COM Yardage Total: 2 Yds / Top: .75 Yds / Side: 1.25 Yds

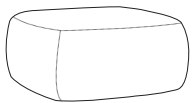
COM	GR1	GR2	GR3	GR4	GR5	GR6	GR7	GR8	GR9	GR10	LEA
\$1488	\$1568	\$1648	\$1718	\$1778	\$1828	\$1888	\$1953	\$2008	\$2138	\$2268	\$2458



2573 30" Ottoman

COM Yardage Total: 2.75 Yds / Top: 1 Yds / Side: 1.75 Yds

COM	GR1	GR2	GR3	GR4	GR5	GR6	GR7	GR8	GR9	GR10	LEA
\$1762	\$1852	\$1932	\$2002	\$2062	\$2140	\$2200	\$2295	\$2385	\$2515	\$2645	\$2985



2575 36" Ottoman

COM Yardage Total: 3.75 Yds / Top: 1.5 Yds / Side: 2.25 Yds

COM	GR1	GR2	GR3	GR4	GR5	GR6	GR7	GR8	GR9	GR10	LEA
\$2370	\$2510	\$2630	\$2750	\$2890	\$2940	\$3000	\$3065	\$3120	\$3250	\$3640	\$3830

OPTIONS

Add upcharge to list price and code to model number

FR	CAL 133 (TB 133) Fire Retardant per yard	\$118	/yd.
MB	Moisture Barrier (1"-59"width)	\$164	ea.

2FO	Two Fabric Option	\$131	per unit
-----	-------------------	-------	----------

DIMENSIONS	24" Ottoman w/Lam Top	30" Ottoman w/Lam Top	36" Ottoman w/Lam Top
Table Top Width:	20"	25.5"	31"
Overall Depth:	24"	30"	36"
Overall Width:	24"	30"	36"
Overall Height:	17"	17"	17"
Qty./Wt. per carton:	1 ea./28 lbs.	1 ea./41 lbs.	1 ea./50 lbs.

LAMINATE TOP NOTE:
 • TOPS ARE 3/4" LAMINATE
 • STD WITH 6F MULTI-PLY

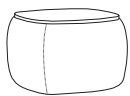


24" OTTOMAN
W/LAMINATE TOP



36" OTTOMAN
W/LAMINATE TOP

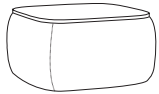
MODEL / DESCRIPTION / LIST PRICING



2577 24" Ottoman With Laminate Top

COM Yardage Total: Sides: 1.25 Yds

COM	GR1	GR2	GR3	GR4	GR5	GR6	GR7	GR8	GR9	GR10	LEA
\$2078	\$2158	\$2238	\$2308	\$2368	\$2418	\$2478	\$2543	\$2598	\$2728	\$2858	\$3048



2579 30" Ottoman With Laminate Top

COM Yardage Total: Sides: 1.75 Yds

COM	GR1	GR2	GR3	GR4	GR5	GR6	GR7	GR8	GR9	GR10	LEA
\$2452	\$2542	\$2622	\$2692	\$2752	\$2830	\$2890	\$2985	\$3075	\$3205	\$3335	\$3675



2581 36" Ottoman With Laminate Top

COM Yardage Total: Sides: 2.25 Yds

COM	GR1	GR2	GR3	GR4	GR5	GR6	GR7	GR8	GR9	GR10	LEA
\$3140	\$3280	\$3400	\$3520	\$3660	\$3710	\$3770	\$3835	\$3890	\$4020	\$4410	\$4600

OPTIONS

Add upcharge to list price and code to model number

FR	CAL 133 (TB 133) Fire Retardant per yard	\$118	/yd.
----	--	-------	------

MB	Moisture Barrier (1"-59"width)	\$164	ea.
----	--------------------------------	-------	-----