

**DAYLEN**

*Designed by Gemma Bernal*

Say hello to the Daylen collection! This trendy set includes a cozy lounge chair, ottomans, and upholstered tables. Daylen is all about comfort and style with its soft, rounded designs. The armless lounge chair can be a standout piece on its own or mix and match with other items for a bold statement. Perfect for offices and campus hangouts, Daylen seamlessly combines practicality and beauty to create welcoming spaces for both work and play.



SINGLE LOUNGE



OTTOMAN



OTTOMAN W/LAMINATE TOP

**ORDERING INFORMATION**

**To Order Please Specify:**

- 1) Series Name
- 2) Model Number
- 3) Quantity
- 4) Fabric Grade and Number
- 5) Optional Items

**GENERAL SPECIFICATIONS**

**Upholstery/Foam**

All foam is fully bonded to frame. Seat cushions are 4" graded high resiliency (H.R.) block foam with back 3" (H.R.) foam, covered entirely with special bonded polyester fiber to protect final upholstery.

**Graded-In & COM Fabric Testing**

Due to the complexity of the upholstery process, please submit your Graded-in/COM for testing. A 10"x10" sample is required. **ALL FABRIC MUST BE PRE APPROVED.** Please see Approved Fabrics link under product webpage images.

**Frame**

Multi-ply hardwood  
Tongue and groove construction nailed and glued

**Glides**

Nylon glides

**Pull Handles**

Spinney Beck Belting Leather, bolted into the frame with a single top stitch

**Casters**

2" Concealed self locking caster, casters lock when in use

**OPTIONS**

---

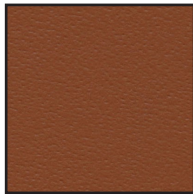
- CODE: FR - CAL 133 (TB 133) Fire Retardant
- CODE: MB - Moisture Barrier (1"-59"width)
- CODE: 2FO - Two Fabric Option
- CODE: PHNDL-D - Leather Pull Handle
- CODE: CAS2-CSL - 2" Concealed self locking caster

**PULL HANDLE: LEATHER COLOR OPTIONS**

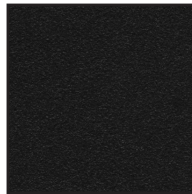
---



CREAM



COGNAC



BLACK

**PULL HANDLE: BUTTON OPTIONS**

---



OYSTER



NICKEL



GILT



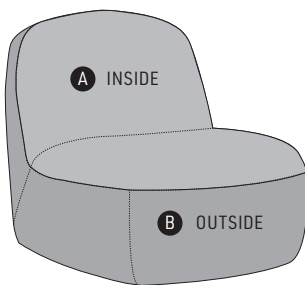
BLACK MATTE



PULL HANDLE SHOWN IN  
COGNAC LEATHER & GILT BUTTONS

**FABRIC OPTIONS**

---



2 FABRIC OPTION

**DISCLAIMERS**

---

DUE TO THE CURVES OF THIS CHAIR, IT MAY CAUSE WRINKLING IN THE UPHOLSTERY.

DIMENSIONS	Single Seat
Seat Height:	17.5"
Seat Depth:	21.5"
Overall Depth:	38"
Overall Width:	29"
Overall Height:	32"
Qty./Wt. per carton:	1 ea./54 lbs.



LOUNGE SEAT SHOWN WITH 2FO  
FABRIC

**MODEL / DESCRIPTION / LIST PRICING**



**2569** Club Lounge

COM Yardage Total: 4.5 Yds / Outside: 3 Yds / Inside: 1.5 Yds

COM	GR1	GR2	GR3	GR4	GR5	GR6	GR7	GR8	GR9	GR10	LEA
\$2592	\$2957	\$3097	\$3237	\$3397	\$3512	\$3692	\$3882	\$4002	\$4182	\$4362	\$4477

**OPTIONS**

Add upcharge to list price and code to model number

FR	CAL 133 (TB 133) Fire Retardant per yard	\$123	/yd.
MB	Moisture Barrier (1"-59"width)	\$171	ea.
2FO	Two Fabric Option	\$136	per unit

PHNDL-D	Leather Pull Handle	\$150	list
CAS2-CSL	2" Concealed self locking caster	\$43	ea.

DIMENSIONS	24" Ottoman	30" Ottoman	36" Ottoman
Overall Depth:	24"	30"	36"
Overall Width:	24"	30"	36"
Overall Height:	18"	18"	18"
Qty./Wt. per carton:	1 ea./19 lbs.	1 ea./24 lbs.	1 ea./29 lbs.

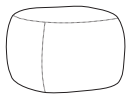


24" OTTOMAN



36" OTTOMAN

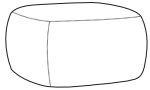
**MODEL / DESCRIPTION / LIST PRICING**



**2571** 24" Ottoman

COM Yardage Total: 2 Yds / Top: .75 Yds / Side: 1.25 Yds

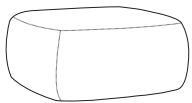
COM	GR1	GR2	GR3	GR4	GR5	GR6	GR7	GR8	GR9	GR10	LEA
\$1488	\$1568	\$1648	\$1718	\$1778	\$1828	\$1888	\$1953	\$2008	\$2138	\$2268	\$2458



**2573** 30" Ottoman

COM Yardage Total: 2.75 Yds / Top: 1 Yds / Side: 1.75 Yds

COM	GR1	GR2	GR3	GR4	GR5	GR6	GR7	GR8	GR9	GR10	LEA
\$1762	\$1852	\$1932	\$2002	\$2062	\$2140	\$2200	\$2295	\$2385	\$2515	\$2645	\$2985



**2575** 36" Ottoman

COM Yardage Total: 3.75 Yds / Top: 1.5 Yds / Side: 2.25 Yds

COM	GR1	GR2	GR3	GR4	GR5	GR6	GR7	GR8	GR9	GR10	LEA
\$2370	\$2510	\$2630	\$2750	\$2890	\$2940	\$3000	\$3065	\$3120	\$3250	\$3640	\$3830

**OPTIONS**

Add upcharge to list price and code to model number

FR	CAL 133 (TB 133) Fire Retardant per yard	\$123	/yd.
MB	Moisture Barrier (1"-59"width)	\$171	ea.

2FO	Two Fabric Option	\$136	per unit
-----	-------------------	-------	----------

DIMENSIONS	24" Ottoman w/Lam Top	30" Ottoman w/Lam Top	36" Ottoman w/Lam Top
Table Top Width:	20"	25.5"	31"
Overall Depth:	24"	30"	36"
Overall Width:	24"	30"	36"
Overall Height:	17"	17"	17"
Qty./Wt. per carton:	1 ea./28 lbs.	1 ea./41 lbs.	1 ea./50 lbs.

**LAMINATE TOP NOTE:**  
 • TOPS ARE 3/4" LAMINATE  
 • STD WITH 6F MULTI-PLY

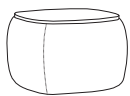


24" OTTOMAN  
W/LAMINATE TOP



36" OTTOMAN  
W/LAMINATE TOP

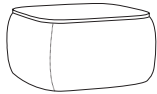
**MODEL / DESCRIPTION / LIST PRICING**



**2577** 24" Ottoman With Laminate Top

COM Yardage Total: Sides: 1.25 Yds

COM	GR1	GR2	GR3	GR4	GR5	GR6	GR7	GR8	GR9	GR10	LEA
\$2078	\$2158	\$2238	\$2308	\$2368	\$2418	\$2478	\$2543	\$2598	\$2728	\$2858	\$3048



**2579** 30" Ottoman With Laminate Top

COM Yardage Total: Sides: 1.75 Yds

COM	GR1	GR2	GR3	GR4	GR5	GR6	GR7	GR8	GR9	GR10	LEA
\$2452	\$2542	\$2622	\$2692	\$2752	\$2830	\$2890	\$2985	\$3075	\$3205	\$3335	\$3675



**2581** 36" Ottoman With Laminate Top

COM Yardage Total: Sides: 2.25 Yds

COM	GR1	GR2	GR3	GR4	GR5	GR6	GR7	GR8	GR9	GR10	LEA
\$3140	\$3280	\$3400	\$3520	\$3660	\$3710	\$3770	\$3835	\$3890	\$4020	\$4410	\$4600

**OPTIONS**

Add upcharge to list price and code to model number

FR	CAL 133 (TB 133) Fire Retardant per yard	\$123	/yd.
----	--	-------	------

MB	Moisture Barrier (1"-59"width)	\$171	ea.
----	--------------------------------	-------	-----