

**DIXON**

Dixon has four tabletop shapes along with round base shape, and offered in varied heights to accommodate any design with purpose. Whether it is a personal pull up table or a coffee table, it looks great in any simple lounge area needing that extra support.



PULL UP TABLE WITH ROUND TOP AND BASE, SHOWN WITH KNIFE EDGE



OCCASIONAL TABLE WITH ROUND TOP AND BASE

**ORDER INFORMATION**

- |                 |                               |
|-----------------|-------------------------------|
| 1) Series Name  | 6) Laminate Selection and No. |
| 2) Model Number | 7) Edge Style Code and Color  |
| 3) Size         | 8) Wood Species               |
| 4) Quantity     | 9) Wood Stain Color           |
| 5) Base Shape   | 10) Optional Items            |

**BASE SPECIFICATIONS**

**Column:** 2" diameter polished chrome.  
**Base:** One round shape:  
 RDB - 15" diameter round  
**Glides:** Nylon glides  
**Assembly:** Base mounts to tabletop with 1/4"-20 x 1" machine screws into metal inserts in top.  
 NO WOOD SCREWS ARE USED.

**STANDARD BASE FINISHES**

**Metal Base:** Polished Chrome

**OPTIONAL BASE FINISHES**

**Metal Base:** Standard Powder Coat

**TABLE TOP SPECIFICATIONS**

**Table Tops**

Table top core is CARB Phase I & Phase II Compliant. Laminate, wood veneer and phenolic backing are glued with water based adhesives. Also available in solid surface and acrylic.

Shapes available in round, elliptical, square, rectangle, almost square and almost rectangle.

**COLOR / EDGE SELECTIONS**

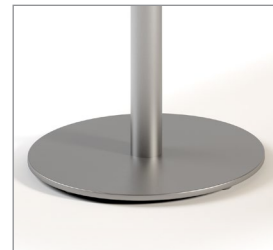
**Laminate/Veneer Selections**

ERG offers over 1000 standard laminate choices from Nevamar, Wilsonart, Formica and Pionite. Wood veneer is available in transparent stain colors - custom stain matching available for an upcharge.

**OPTIONS**

- CODE: SF - Powder Coat Finish

**BASE SHAPE**



15" ROUND - RDB



ROUND TOP AND BASE SHOWN WITH  
6J KNIFE EDGE W/POLAR STAIN

**MODEL / DESCRIPTION / LIST PRICING**

**DIXON | PULL UP | ROUND TOP**



Model Number	Table Top Size	Table Height	Shpg. Weight	LAMINATE TOP EDGE 2B	LAMINATE TOP EDGE 3A	LAMINATE TOP EDGE 6-J/6Q	VENEER TOP EDGE 8G
DXLR16	16" dia.	26"	35 lbs.	\$1042	\$1199	\$1640	\$1643
DXLR18	18" dia.	26"	40 lbs.	\$1057	\$1217	\$1645	\$1664
DXLR24	24" dia.	26"	45 lbs.	\$1183	\$1362	\$1806	\$1819

**DIXON | PULL UP | ALMOST SQUARE TOP**



Model Number	Table Top Size	Table Height	Shpg. Weight	LAMINATE TOP EDGE 2B	LAMINATE TOP EDGE 3A	LAMINATE TOP EDGE 6-J/6Q	VENEER TOP EDGE 8G
DXLR16AS	16"X16"	26"	35 lbs.	\$1198	\$1378	\$1885	\$1890
DXLR18AS	18"X18"	26"	40 lbs.	\$1216	\$1397	\$1898	\$1912
DXLR24AS	24"X24"	26"	45 lbs.	\$1361	\$1567	\$2057	\$2092

Call for pricing on other edge profiles and KrystalCast® or solid surface tops.

**OPTIONS**

Add upcharge to list price and code to model number

SF	Powder Coat Finish	\$82
----	--------------------	------



ROUND TOP AND ROUND BASE

**MODEL / DESCRIPTION / LIST PRICING**

**DIXON | OCCASIONAL | ROUND TOP**



Model Number	Table Top Size	Table Height	Shpg. Weight	LAMINATE TOP EDGE 2B	LAMINATE TOP EDGE 3A	LAMINATE TOP EDGE 6-J/6Q	VENEER TOP EDGE 8G
DXOR16	16" dia.	18"	35 lbs.	\$1119	\$1288	\$1633	\$1760
DXOR18	18" dia.	18"	40 lbs.	\$1135	\$1306	\$1643	\$1779
DXOR24	24" dia.	18"	45 lbs.	\$1277	\$1470	\$1809	\$1915

**DIXON | OCCASIONAL | ALMOST SQUARE TOP**



Model Number	Table Top Size	Table Height	Shpg. Weight	LAMINATE TOP EDGE 2B	LAMINATE TOP EDGE 3A	LAMINATE TOP EDGE 6-J/6Q	VENEER TOP EDGE 8G
DXOR16AS	16" x 16"	18"	35 lbs.	\$1288	\$1484	\$1881	\$2023
DXOR18AS	18" x 18"	18"	40 lbs.	\$1305	\$1502	\$1903	\$2044
DXOR24AS	24" x 24"	18"	45 lbs.	\$1468	\$1689	\$2080	\$2203

Call for pricing on other edge profiles and KrystalCast® or solid surface tops.

**OPTIONS**

Add upcharge to list price and code to model number

SF	Powder Coat Finish	\$82
----	--------------------	------