

# VERONA



**ERG**  
INTERNATIONAL

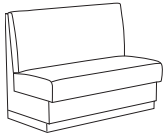




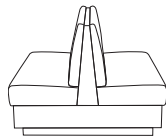


# VERONA

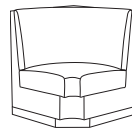
The Verona Banquette is a versatile seating solution that combines style and functionality, making it ideal for both dining and perimeter seating areas. Its substantial laminate or veneer surround base, complete with a plinth, adds a sleek and modern touch to any space. Available in both standard and bar height versions, it can adapt to various settings. Customization options, including a clean-out feature, metal legs, or a recessed plinth, ensure it can be tailored to fit the unique design and spatial needs of any environment. Whether for restaurants, lounges, or collaborative spaces, the Verona Banquette delivers comfort and visual appeal.



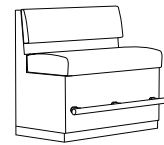
banquette



back-to-back banquette



corner banquette

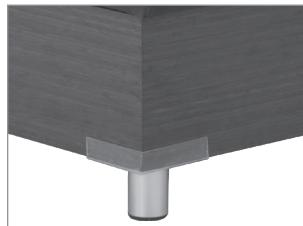


bar height banquette  
with footrest

## BASE OPTIONS



optional recessed plinth base  
available, on one or two sides.



metal leg option



Clean out option



2 fabric option

**ERG**  
INTERNATIONAL

[www.ERGinternational.com](http://www.ERGinternational.com)