

VERONA

The Verona Banquette is designed with a substantial laminate or veneer surround on the base with a plinth and makes the perfect choice for your perimeter seating or dining needs. Seats and backs can be upholstered with matching fabrics, or choose an optional two tone or vinyl and fabric combination to match any color scheme.



BACK TO BACK VERONA

ORDERING INFORMATION

- | | |
|----------------------------|---------------------------|
| 1) Series Name | 5) Contrasting Fabrics |
| 2) Model Number | 6) Laminate Selection |
| 3) Quantity | 7) Veneer Species & Stain |
| 4) Fabric Grade and Number | 8) Optional Items |

SOFT SEATING	WEIGHT LIMIT
1 Seat	500 lbs.
2 Seat	1000 lbs.
3 Seat	1500 lbs.



STANDARD BANQUETTE COMES WITH A FLUSH PLINTH BASE ON SIDES FOR GANGING, AND RECESSED FRONT.

GENERAL SPECIFICATIONS

Upholstery / Foam

Seat and back are covered in choice of fabric, vinyl, crypton, leather or COM. ERG uses only water based glues and adhesives in our upholstery process. All foam is fully bonded to frame. Seat cushions are 3" graded high resiliency (H.R.) block foam with back 2" (H.R.) foam, covered entirely with special bonded polyester fiber to protect final upholstery. Contrasting fabrics are available, see options for pricing.

Frame Construction

The Verona frame is made of multi-ply hardwood and finished with your choice of laminates or optional wood veneer. Cushions are supported by no-sag springs. The Verona back cushion is removable and the seat frame is constructed of multi-ply hardwood and is removable.

Base Details

Plinth Base: The standard recessed front base is available in a choice of laminate or unfinished so that you can add your own cove base or carpet. Note: when plinth base is ganged, there will be a 1/2" gap between plinth bases.

Anchoring

Verona dining benches are easy to anchor to the floor. Hardware for securing the unit to the floor is not included

Note:

Please allow extra fabric for repeat design.



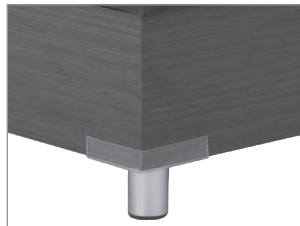
STANDARD GANGED PLINTH BASE, WITH 1/2" GAP BETWEEN BASES

OPTIONS

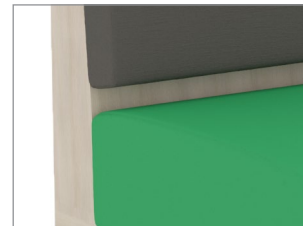
- CODE: FR - CAL 133 (TB 133) Fire Retardant
- CODE: MB -Moisture Barrier (1"-59"width)
- CODE: MB60 -Moisture Barrier (60"and up)
- CODE: MBB -Moisture Barrier Back-to-Back (1"-59"width)
- CODE: MBB60 -Moisture Barrier Back-to-Back (60"and up)
- CODE: 2FO - Two Fabric Option
- CODE: USS - Under Seat Fully Lined Storage - not available on 72" width
- CODE: MTL - Metal Legs: - select color from standard finishes
- CODE: CO - Clean Out (1"-59"width)
- CODE: CO1 - Clean Out (60"and up)
- CODE: COB - Clean Out Back-to-Back (1"-59"width)
- CODE: CO1B - Clean Out Back-to-Back (60"and up)
- CODE: RB1 - Recessed Plinth Base (1 Side only)
- CODE: RB2 - Recessed Plinth Base (2 Sides)
- CODE: GBP - Ganging Bracket for Plinth Base
- CODE: UBL48 - Unfinished Back - Laminate 48" Unit
- CODE: UBV48 - Unfinished Back - Veneer 48" Unit
- CODE: UBL60 - Unfinished Back - Laminate 60" Unit
- CODE: UBV60 - Unfinished Back - Veneer 60" Unit
- CODE: UBL72 - Unfinished Back - Laminate 72" Unit
- CODE: UBV72 - Unfinished Back - Veneer 72" Unit



OPTIONAL RECESSED PLINTH BASE
AVAILABLE, ON ONE OR TWO SIDES.



METAL LEG OPTION



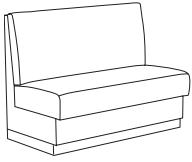
CLEAN OUT OPTION

DIMENSIONS	48" Wide Banquette	60" Wide Banquette	72" Wide Banquette
Seat Depth:	20"	20"	20"
Seat Height:	18"	18"	18"
Overall Width:	48"	60"	72"
Overall Depth:	27"	27"	27"
Overall Height:	36"	36"	36"
Qty./Wt.:	1 ea. 110 lbs	1 ea. 165 lbs	1 ea. 210 lbs



48" WIDE VERONA

MODEL / DESCRIPTION / LIST PRICING



650 48" Wide Banquette - Laminate Frame COM Yardage: Total: 4 Yds. / Back: 2 Yds. / Seat: 2 Yds.

COM	GR1	GR2	GR3	GR4	GR5	GR6	GR7	GR8	GR9	GR10	LEA
\$4916	\$5262	\$5473	\$5692	\$5919	\$6155	\$6400	\$6659	\$6925	\$7203	\$7489	\$8851

651 48" Wide Banquette - Wood Veneer Frame COM Yardage: Total: 4 Yds. / Back: 2 Yds. / Seat: 2 Yds.

COM	GR1	GR2	GR3	GR4	GR5	GR6	GR7	GR8	GR9	GR10	LEA
\$6883	\$7364	\$7661	\$7969	\$8286	\$8618	\$8961	\$9322	\$9693	\$10082	\$10483	\$12391

652 60" Wide Banquette - Laminate Frame COM Yardage: Total: 5 Yds. / Back: 2.5 Yds. / Seat: 2.5 Yds.

COM	GR1	GR2	GR3	GR4	GR5	GR6	GR7	GR8	GR9	GR10	LEA
\$7261	\$7769	\$8079	\$8403	\$8739	\$9086	\$9452	\$9830	\$10222	\$10632	\$11057	\$13069

653 60" Wide Banquette - Wood Veneer Frame COM Yardage: Total: 5 Yds. / Back: 2.5 Yds. / Seat: 2.5 Yds.

COM	GR1	GR2	GR3	GR4	GR5	GR6	GR7	GR8	GR9	GR10	LEA
\$10164	\$10876	\$11313	\$11767	\$12233	\$12725	\$13233	\$13764	\$14315	\$14886	\$15478	\$18297

654 72" Wide Banquette - Laminate Frame COM Yardage: Total: 6 Yds. / Back: 3 Yds. / Seat: 3 Yds.

COM	GR1	GR2	GR3	GR4	GR5	GR6	GR7	GR8	GR9	GR10	LEA
\$9835	\$10528	\$10948	\$11385	\$11840	\$12315	\$12805	\$13317	\$13849	\$14404	\$14981	\$17707

655 72" Wide Banquette - Wood Veneer Frame COM Yardage: Total: 6 Yds. / Back: 3 Yds. / Seat: 3 Yds.

COM	GR1	GR2	GR3	GR4	GR5	GR6	GR7	GR8	GR9	GR10	LEA
\$13767	\$14732	\$15321	\$15931	\$16570	\$17231	\$17922	\$18640	\$19385	\$20161	\$20969	\$24780

OPTIONS

Add upcharge to list price and code to model number

FR	CAL 133 (TB 133) Fire Retardant per yard	\$118	/yd.
MB	Moisture Barrier (1"-59"width)	\$164	ea.
MB60	Moisture Barrier (60"and up)	\$262	ea.
2FO	Two Fabric Option	\$131	
USS	Under Seat Fully Lined Storage - not available on 72" w	\$589	
MTL	Metal Legs - per unit		subtract \$50
CO	Clean Out (1"-59"width)	\$327	
CO1	Clean Out (60"and up)	\$503	
RB1	Recessed Base, 1 side	\$145	

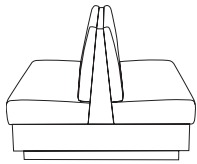
RB2	Recessed Base, 2 sides	\$287	
GBP	Ganging Bracket for Plinth Base	\$286	per pair
UBL48	Unfinished Back - Laminate Unit (48" width)		subtract \$200
UBV48	Unfinished Back - Veneer Unit (48" width)		subtract \$400
UBL60	Unfinished Back - Laminate Unit (60" width)		subtract \$225
UBV60	Unfinished Back - Veneer Unit (60" width)		subtract \$450
UBL72	Unfinished Back - Laminate Unit (72" width)		subtract \$250
UBV72	Unfinished Back - Veneer Unit (72" width)		subtract \$500

DIMENSIONS	48" Wide Banquette	60" Wide Banquette	72" Wide Banquette
Seat Depth:	20"	20"	20"
Seat Height:	18"	18"	18"
Overall Width:	48"	60"	72"
Overall Depth:	52"	52"	52"
Overall Height:	36"	36"	36"
Qty./Wt.:	1 ea./150 lbs.	1 ea./200 lbs.	1 ea./245 lbs.



BACK TO BACK VERONA

MODEL / DESCRIPTION / LIST PRICING



650-B2B 48" Wide Back to Back - Laminate Frame

COM Yardage: Total: 8 Yds. / Back: 4 Yds. / Seat: 4 Yds.

COM	GR1	GR2	GR3	GR4	GR5	GR6	GR7	GR8	GR9	GR10	LEA
\$9346	\$10000	\$10399	\$10816	\$11247	\$11698	\$12165	\$12652	\$13159	\$13684	\$14233	\$16822

651-B2B 48" Wide Back to Back - Wood Veneer Frame

COM Yardage: Total: 8 Yds. / Back: 4 Yds. / Seat: 4 Yds.

COM	GR1	GR2	GR3	GR4	GR5	GR6	GR7	GR8	GR9	GR10	LEA
\$13077	\$13994	\$14556	\$15138	\$15741	\$16372	\$17028	\$17709	\$18413	\$19152	\$19917	\$23542

652-B2B 60" Wide Back to Back - Laminate Frame

COM Yardage: Total: 10 Yds. / Back: 5 Yds. / Seat: 5 Yds.

COM	GR1	GR2	GR3	GR4	GR5	GR6	GR7	GR8	GR9	GR10	LEA
\$13793	\$14759	\$15350	\$15964	\$16602	\$17268	\$17956	\$18677	\$19420	\$20200	\$21007	\$24829

653-B2B 60" Wide Back to Back - Wood Veneer Frame

COM Yardage: Total: 10 Yds. / Back: 5 Yds. / Seat: 5 Yds.

COM	GR1	GR2	GR3	GR4	GR5	GR6	GR7	GR8	GR9	GR10	LEA
\$19307	\$20658	\$21484	\$22344	\$23236	\$24167	\$25134	\$26140	\$27185	\$28274	\$29403	\$34751

654-B2B 72" Wide Back to Back - Laminate Frame

COM Yardage: Total: 12 Yds. / Back: 6 Yds. / Seat: 6 Yds.

COM	GR1	GR2	GR3	GR4	GR5	GR6	GR7	GR8	GR9	GR10	LEA
\$18688	\$19996	\$20796	\$21628	\$22493	\$23394	\$24328	\$25302	\$26312	\$27367	\$28462	\$33639

655-B2B 72" Wide Back to Back - Wood Veneer Frame

COM Yardage: Total: 12 Yds. / Back: 6 Yds. / Seat: 6 Yds.

COM	GR1	GR2	GR3	GR4	GR5	GR6	GR7	GR8	GR9	GR10	LEA
\$26158	\$27988	\$29108	\$30274	\$31483	\$32743	\$34053	\$35415	\$36831	\$38303	\$39838	\$47083

OPTIONS

Add upcharge to list price and code to model number

FR	CAL 133 (TB 133) Fire Retardant per yard	\$118	/yd.
MBB	Moisture Barrier Back-to-Back (1"-59"width)	\$327	ea.
MBB60	Moisture Barrier Back-to-Back (60"and up)	\$522	ea.
2FO	Two Fabric Option	\$131	
USS	Under Seat Fully Lined Storage - not available on 72" w	\$589	
MTL	Metal Legs - per unit	subtract \$50	

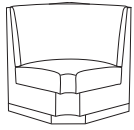
COB	Clean Out Back-to-Back (1"-59"width)	\$654	
CO1B	Clean Out Back-to-Back (60"and up)	\$1,007	
RB1	Recessed Base, 1 side	\$145	
RB2	Recessed Base, 2 sides	\$287	
GBP	Ganging Bracket for Plinth Base	\$286	per pair

DIMENSIONS	90° Corner Banquettes
Seat Depth:	18.5"
Seat Width:	18.5"
Seat Height:	18"
Overall Width:	30"
Overall Depth:	30"
Overall Height:	36"
Qty./Wt.:	1 ea./150 lbs.



VERONA CORNER UNIT

MODEL / DESCRIPTION / LIST PRICING

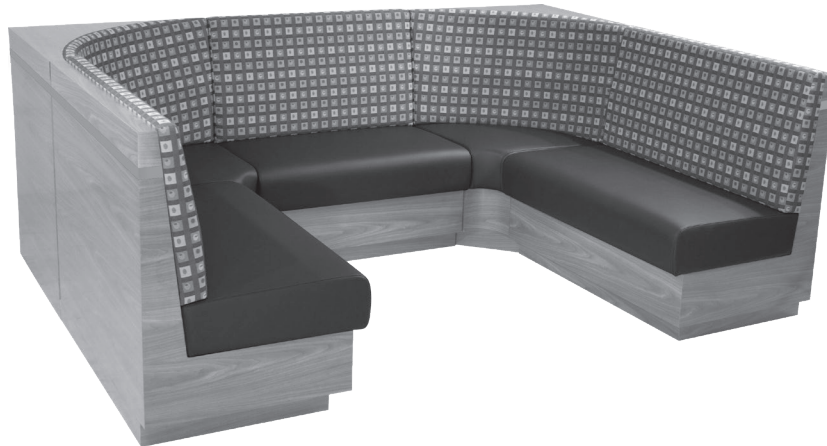


660 Verona 90° Corner Unit - Laminate Frame COM Yardage: Total: 6.5 Yds. / Back: 4.5 Yds. / Seat: 2 Yds.

COM	GR1	GR2	GR3	GR4	GR5	GR6	GR7	GR8	GR9	GR10	LEA
\$4451	\$4762	\$4953	\$5152	\$5356	\$5572	\$5793	\$6027	\$6267	\$6518	\$6781	\$8013

661 Verona 90° Corner Unit - Wood Veneer Frame COM Yardage: Total: 6.5 Yds. / Back: 4.5 Yds. / Seat: 2 Yds.

COM	GR1	GR2	GR3	GR4	GR5	GR6	GR7	GR8	GR9	GR10	LEA
\$6677	\$7144	\$7427	\$7723	\$8034	\$8356	\$8692	\$9039	\$9401	\$9777	\$10169	\$12017



VERONA "U-SHAPE" CONFIGURATION SHOWN WITH
RECESSED PLINTH BASE ON ONE END

OPTIONS

Add upcharge to list price and code to model number

FR	CAL 133 (TB 133) Fire Retardant per yard	\$118	/yd.
MB	Moisture Barrier (1"-59"width)	\$164	ea.
2FO	Two Fabric Option	\$131	
MTL	Metal Legs - per unit	subtract \$50	
CO	Clean Out (1"-59"width)	\$327	

RB1	Recessed Base, 1 side	\$145	
RB2	Recessed Base, 2 sides	\$287	
GBP	Ganging Bracket for Plinth Base	\$286	per pair