

# ERG Graded in Fabric

---

Main Line Flax / Synergy

**ERG Graded in Fabric**  
**Main Line Flax**

Photographic fabric scans are not color accurate. Always request actual fabric samples before ordering.



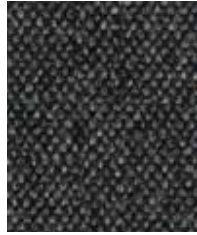
**Upminster**  
MLF20



**Archway**  
MLF02



**Camden**  
MLF26



**Temple**  
MLF16



**Kensington**  
MLF07



**Lambeth**  
MLF08



**Morden**  
MLF12



**Bank**  
MLF23



**Stockwell**  
MLF15



**Tooting**  
MLF17



**Goldhawk**  
MLF31



**Finsbury**  
MLF30



**Tufnell**  
MLF18



**Farringdon**  
MLF29



**Greenford**  
MLF32



**Newbury**  
MLF10



**Bethnal**  
MLF25



**Stanmore**  
MLF37



**Pimlico**  
MLF34



**Russell**  
MLF38



**Brompton**  
MLF35



**Waterloo**  
MLF21



**Westminster**  
MLF22



**Charing**  
MLF27



**Highgate**  
MLF33



**Victoria**  
MLF19



**Tower**  
MLF36



**Barbican**  
MLF03



**Aldgate**  
MLF01



**Parsons**  
MLF14



**Wembley**  
MLF11



**Northfields**  
MLF40



**Edgware**  
MLF28

**ERG Graded in Fabric**  
**Synergy**

Photographic fabric scans are not color accurate. Always request actual fabric samples before ordering.



**Serendipity**  
LDS08



**Partner**  
LDS16



**Mix**  
LDS17



**Compound**  
LDS25



**Wed**  
LDS34



**Level**  
LDS20



**Affix**  
LDS32



**Linea**  
LDS37



**Collective**  
LDS39



**Bracket**  
LDS23



**Regard**  
LDS54



**Pact**  
LDS53



**Comply**  
LDS52



**League**  
LDS50



**Couple**  
LDS41



**Kinship**  
LDS56



**Support**  
LDS55



**Engage**  
LDS57



**Family**  
LDS58



**Group**  
LDS59



**Accord**  
LDS60



**Venture**  
LDS05



**Fellowship**  
LDS66



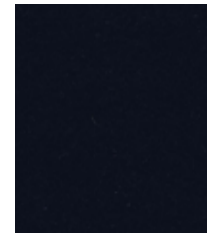
**Warmth**  
LDS67



**Collaborate**  
LDS68



**Alike**  
LDS62



**Sync**  
LDS69



**Affinity**  
LDS74



**Work**  
LDS73



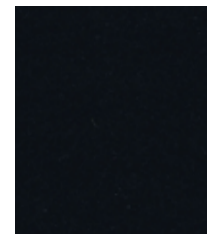
**Global**  
LDS86



**Values**  
LDS87



**Process**  
LDS88



**Seek**  
LDS27

# Technical information



EN

## Composition

**Synergy:** 95% Pure New Wool, 5% Nylon

**Main Line Flax:** 70% Pure New Wool, 30% Flax

## Environmental

**Synergy/Main Line Flax:** Certified to the

EU Ecolabel

**Main Line Flax:** Rapidly renewable and compostable Made from wool and bast fiber

## Width

54 inches minimum

## Weight

**Synergy:** 11<sup>3/4</sup> oz/sq yd ±5% (17<sup>3/4</sup> oz/running yd)

**Main Line Flax:** 13oz/sq yd ±5% (19<sup>1/4</sup> oz/running yd ±5%)

## \*Abrasion Resistance

**Synergy:** ASTM D4966 Martindale method, Heavy Duty Upholstery independently certified to ≥100,000 cycles.

**Main Line Flax:** ASTM D4157 Wyzenbeek method,

Heavy Duty Upholstery independently certified to 100,000 double rubs.

Covered by a full and comprehensive 10 year guarantee

(full details available)

## Flammability

California Technical Bulletin 117 - 2013

NFPA 260 + UFAC - Class 1

BS 7176 Low Hazard

**Main Line Flax:**

ASTM E84 Class 1 or A (Adhered)

ASTM E84 Class 2 or B (Un-adhered)

**Synergy:** ASTM E84 Class 2 or B (Adhered)

ASTM E84 Class 2 or B (Un-adhered)

**Optional please specify when ordering:**

**Synergy:** ASTM E84 Class 1 or A (Adhered) when FR treated

*Note: Flammability performance is dependent on components used.*

## Light Fastness

AATCC-16 (40 hours) Class 4

## Color Fastness to Crocking

AATCC-8 (Dry: 4, Wet: 3)

## Cleaning code

W/S

Clean with a water-based cleaning agent or solvent: Depending on the stain, you can use a dry-cleaning solvent, the foam of a mild detergent, or upholstery shampoo.

\*Camira recognizes that the number of Martindale cycles/Wyzenbeek double rubs do not reflect the actual wear performance of fabrics. We're so confident in the durability of our products that we provide a robust 10 year guarantee (full details available). This product is externally certified, details of which are on our website and available from our customer services team.

Multiple factors affect fabric durability and appearance retention, including end-user application and correct maintenance. Results above 100,000 cycles/double rubs have not been shown to be a reliable indicator of increased fabric lifespan.

Batch to batch variations in shade may occur within commercial tolerances. We reserve the right to alter technical specifications without notice. The Unregistered Design Rights and the Copyright in all designs are the exclusive property of Camira Fabrics Limited.

ERG International

361 Bernoulli Circle

Oxnard, CA, 93030, USA

Tel: 805-981-9978

Toll Free: 1-800-446-1186

Fax: 805-981-9878

Email: [sales@erginternational.com](mailto:sales@erginternational.com)

[www.erginternational.com](http://www.erginternational.com)

For additional information or sample requests visit:

[www.camirafabrics.com](http://www.camirafabrics.com)

Samples can also be requested by email at:

[memos@camirafabrics.com](mailto:memos@camirafabrics.com)

**ERG**  
INTERNATIONAL

**camira**