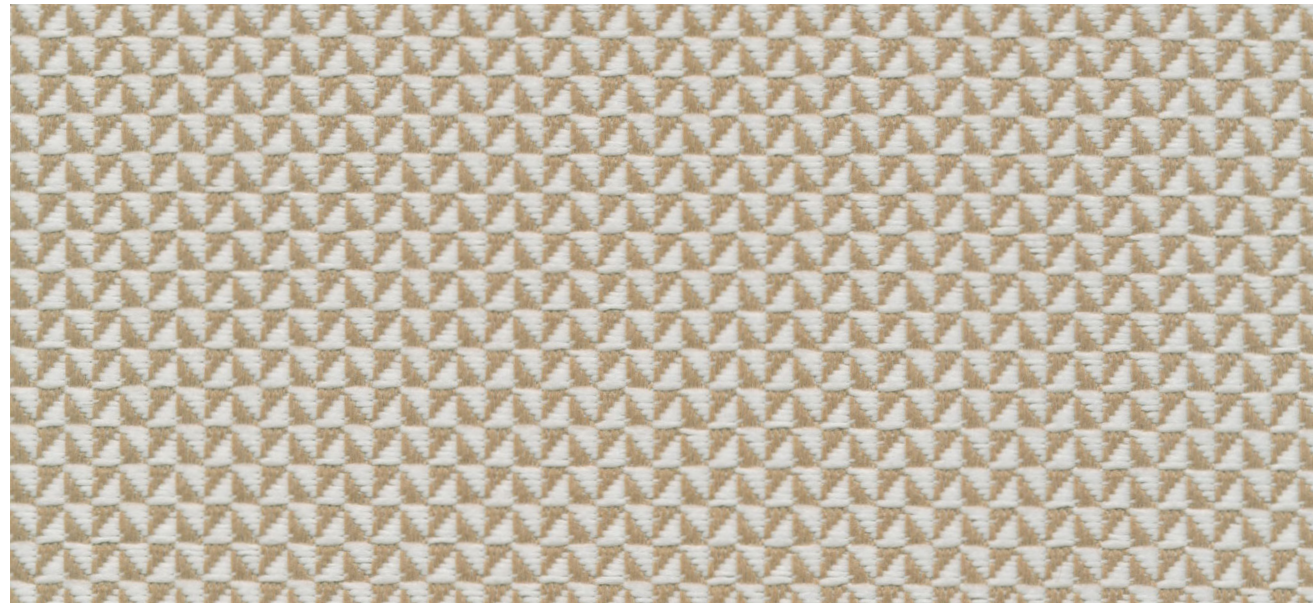


Concortex

GRADED - IN FABRIC

ERG
INTERNATIONAL

A P E X



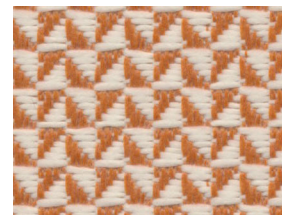
Raffia



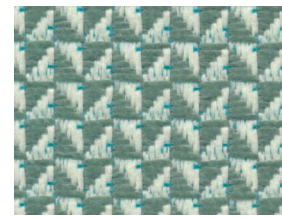
Pristine



Raffia



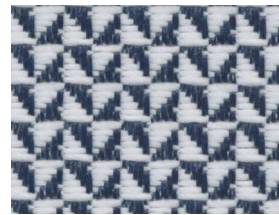
Ginger



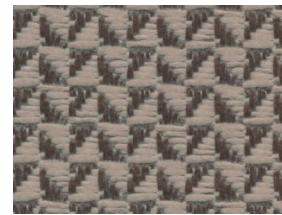
Surf



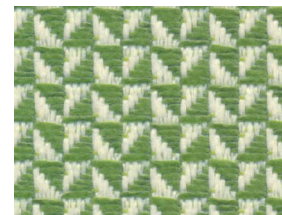
Poppy



Marina



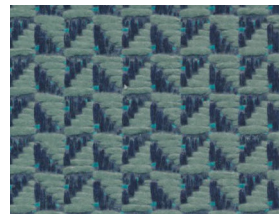
Pinecone



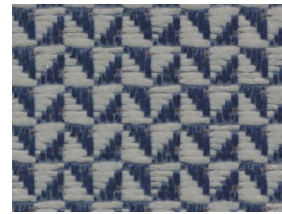
Lime



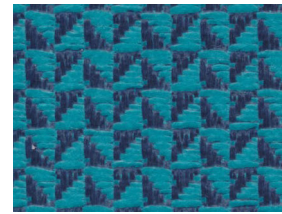
Brick



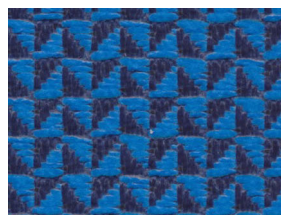
Bluejay



Inkstone

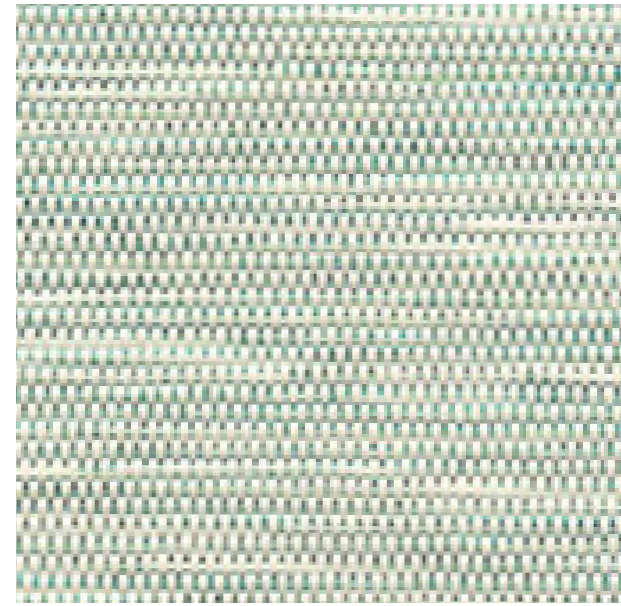


Aegean

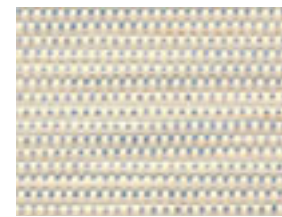


Deep Sea

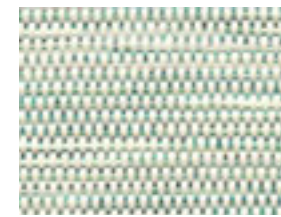
F L U X



Splash



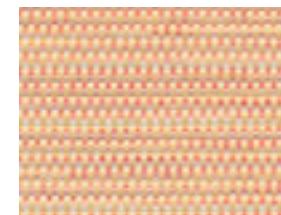
Mist



Splash



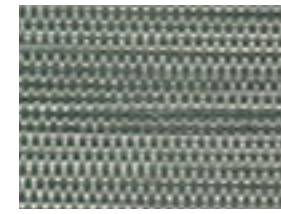
Fog



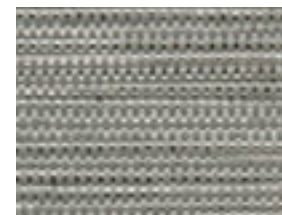
Coral



Wicker

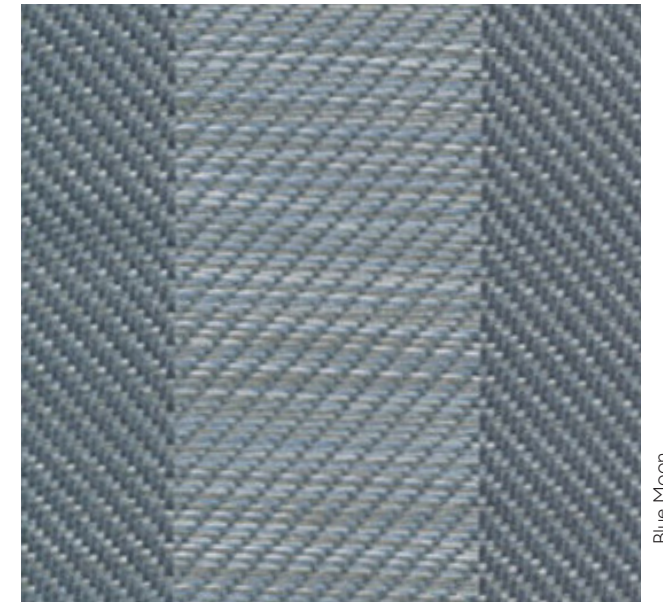


Tortoise



Smoke

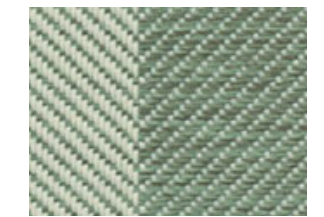
P A R A L L E L



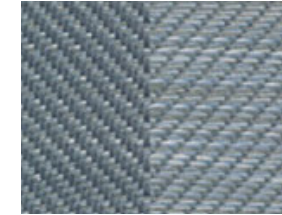
Blue Moon



Birch



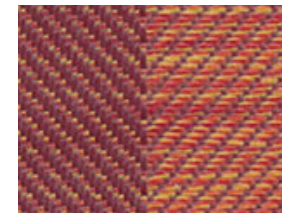
Wintergreen



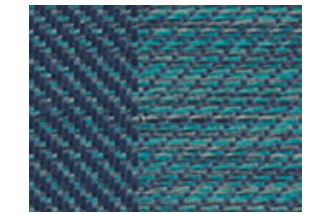
Blue Moon



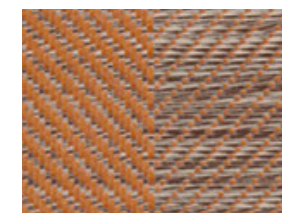
Flaxen



Habanero



Gulfstream



Bittersweet

A P E X • F L U X • P A R A L L E L

Application: Upholstery
Content: 88% Polyester, 12% Tekloom® TPE
Backing: Acrylic
Finish: Graffiti-Free®
Width: 54"
Repeat: Apex : 0.275" H, 0.196" V
 Flux : N/A
 Parallel : 2.375" H, 0.125" V
Abrasion: 1,000,000+ Double Rubs (ASTM D4157 Wyzenbeek)
Hydrolysis: 10+ weeks (ISO 1419)
Flammability: CA Bulletin 117-2013; UFAC/NFPA-260; IMO A652 (16) 8.2
Cleaning: W/S, Bleach (10:1)
Environmental: DMF Free, PVC/Phthalate Free, No added FR /Anti-Bacterial,
 Complies with Healthier Hospitals & Cal 01350

tekloom#

A woven textile chemically bonded with the durable components of a coated fabric to create a high-performance fused textile.



 ACT® Registered Certification Marks

ERG
INTERNATIONAL

361 N. Bernoulli Circle
 Oxnard, CA 93030 www.erginter-
 national.com - 800.446.1186 Phone
 805.981.9978 - Fax 805.981.9878