

## High Performance Color by Design

**DESIGNTEX**

**Value products ideal for  
high traffic/high abuse environments**

Quick Ship Program

Nanotechnology Stain Resistant Finish  
Compatible with Disinfectants  
95,000+ Abrasion

**ERG**  
INTERNATIONAL



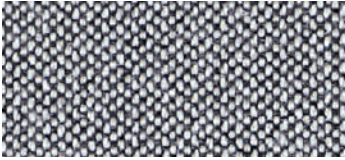
**Gridley Penguin**  
4148-101



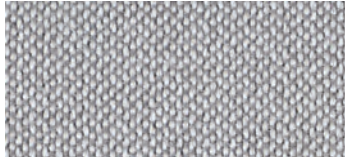
**Woolish Gull**  
3973-801



**Woolish Sky**  
3973-403



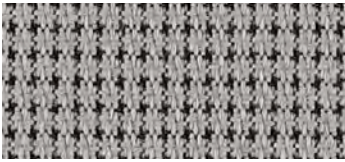
**Rocket Osprey**  
2693-804



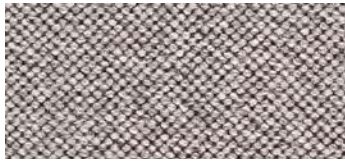
**Rocket Grey**  
2693-803



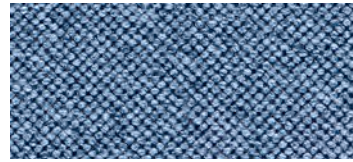
**Gridley Sky**  
4148-401



**Gridley Smoke**  
4148-801



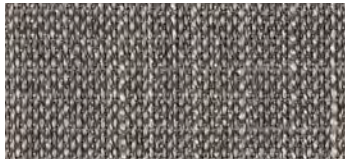
**Woolish Mica**  
3973-803



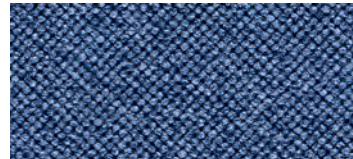
**Woolish Denim**  
3973-406



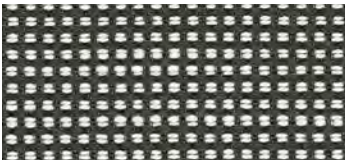
**Woolish Osprey**  
3973-804



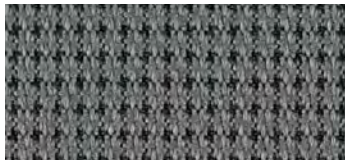
**Ulster Upholstery Pewter**  
3957-803



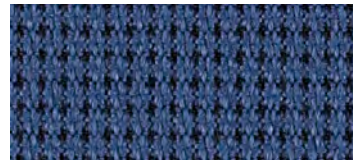
**Woolish Delft**  
3973-408



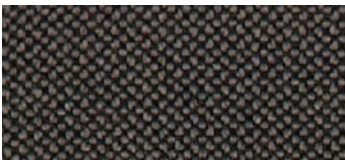
**Mark Ink**  
3946-803



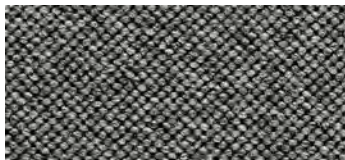
**Gridley Charcoal**  
4148-802



**Gridley Navy**  
4148-402



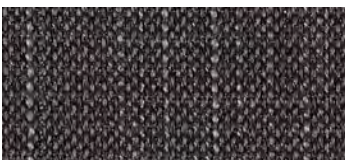
**Rocket Graphite**  
2693-801



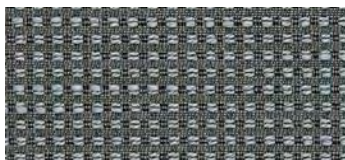
**Woolish Charcoal**  
3973-805



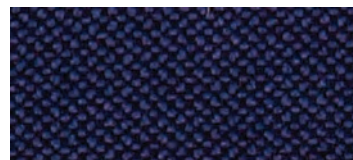
**Woolish Cadet**  
3973-409



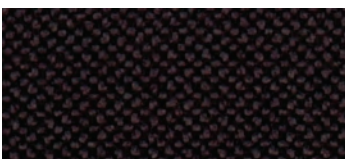
**Ulster Upholstery Steel**  
3957-804



**Mark Slate**  
3946-802



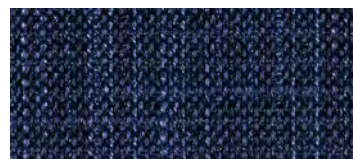
**Rocket Navy**  
2693-404



**Rocket Ink**  
2693-802

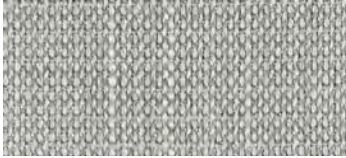


**Woolish Bluestone**  
3973-405

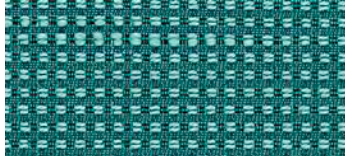


**Ulster Upholstery Navy**  
3957-404





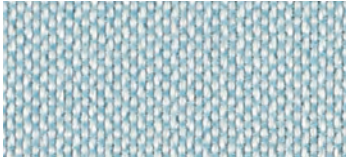
**Ulster Upholstery** Glacier  
3957-401



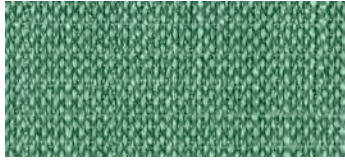
**Mark** Canal  
3946-403



**Mark** Honeycomb  
3946-201



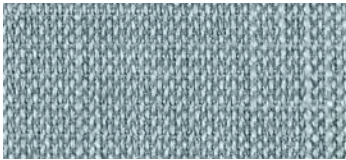
**Rocket** Sea Salt  
2693-406



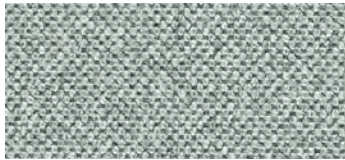
**Ulster Upholstery** Sea  
3957-503



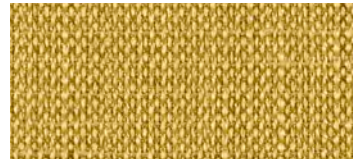
**Woolish** Wheat  
3973-201



**Ulster Upholstery** Sky  
3957-402



**Woolish** Sage  
3973-503



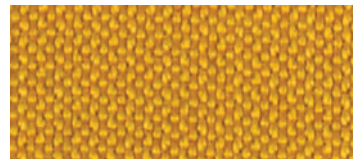
**Ulster Upholstery** Yellow  
3957-201



**Gridley** Teal  
4148-502



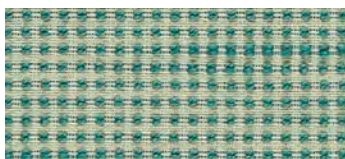
**Rocket** Olivine  
2693-507



**Rocket** Gold  
2693-201



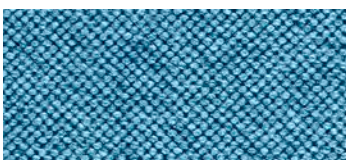
**Rocket** Caribbean  
2693-505



**Mark** Mint  
3946-502



**Woolish** Canary  
3973-202



**Woolish** Pool  
3973-404



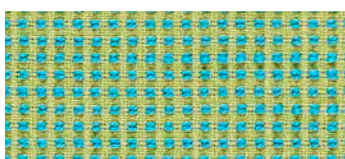
**Ulster Upholstery** Fern  
3957-502



**Mark** Verbena  
3946-501



**Gridley** Blue Green  
4148-503



**Mark** Parakeet  
3946-503



**Ulster Upholstery** Sage  
3957-501



**Mark** Indigo  
3946-405



**Gridley** Frog  
4148-501

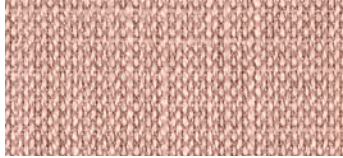


**Woolish** Avocado  
3973-501





**Woolish Quartz**  
3973-301



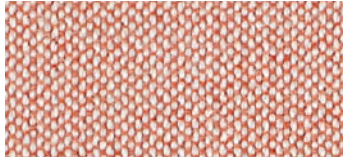
**Ulster Upholstery Blush**  
3957-301



**Rocket Linen**  
2693-105



**Mark Bellini**  
3946-701



**Rocket Rose Quartz**  
2693-304



**Mark Shoji**  
3946-101



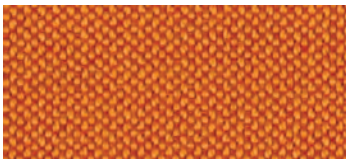
**Mark Surge**  
3946-703



**Mark Persimmon**  
3946-702



**Woolish Pink Salt**  
3973-701



**Rocket Carotene**  
2693-701



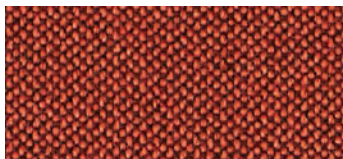
**Ulster Upholstery Orange**  
3957-701



**Woolish Red Rock**  
3946-702



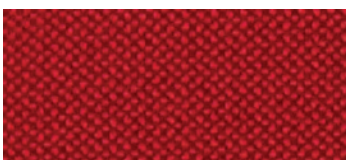
**Gridley Persimmon**  
4148-701



**Rocket Terracotta**  
2693-703



**Gridley Brick**  
4148-702



**Rocket Flame**  
2693-301



**Mark Ignite**  
3946-301



**Ulster Upholstery Terracotta**  
3957-304



**Woolish Tomato**  
3973-302



**Ulster Upholstery Red**  
3957-303



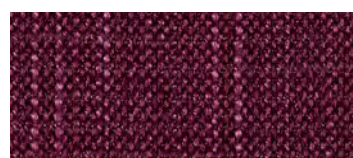
**Woolish Beet**  
3973-303



**Gridley Fire Engine**  
4148-301



**Rocket Ruby**  
2693-302



**Ulster Upholstery Plum**  
3957-601

# High Performance Color by Design

Style Name	Style #	Content	Finish	Cleaning	Width	Repeat	Abrasion	Multi-Use	Recycled Content
Gridley	4148	85% Polyester (Postconsumer Recycled), 15% Polyester	Nanotechnology Stain Resistant	WS	54 inches (137 cm)	None	100,000 Wyzenbeek double rubs (CD)	•	•
Mark	3946	78% Polyester, 22% Nylon (Solution Dyed)	Nanotechnology Stain Resistant	WS Bleach (10:1)	57 inches (145 cm)	None	100,000 Wyzenbeek double rubs (CD)		
Rocket	2693	72% Polyester (Postconsumer Recycled), 28% Polyester	Nanotechnology Stain Resistant	WS	54 inches (137 cm)	None	100,000 Wyzenbeek double rubs (CD)	•	•
Ulster Upholstery	3957	100% Polyester	Nanotechnology Stain Resistant	WS	55 inches (140 cm)	None	95,000 Wyzenbeek double rubs (CD)		
Woolish	3973	85% Polyester (Postconsumer Recycled), 15% Polyester	Nanotechnology Stain Resistant	WS	54 inches (137 cm)	None	400,000 Wyzenbeek double rubs (CD)	•	•

Meets or exceeds these ACT performance standards:



Additional colorways available  
For samples please call 800.221.1540

### Nanotechnology Stain Resistant Finish

A stain resistant finish that, thanks to the light-weight nature of nanotechnology, preserves a fabric's feel. The finish also allows any bleach-treatable fabric to remain bleach cleanable. Ask your representative about our nanotechnology stain resistant finish providers.

### Cleaning Codes

**BC** Bleach cleanable with a 4:1 or 10:1 water-to-bleach dilution for the lifetime of the product.

**WS** Clean only with water-based or solvent-based cleaner. Do not saturate.

For regular maintenance of coated fabrics, always rinse the cleaned and/or disinfected area(s) with fresh water. Wipe dry and repeat if necessary.

### Bleach and Disinfectant Testing

All products have been tested with bleach (sodium hypochlorite) and/or a variety of disinfectants (alcohol, hydrogen peroxide, quaternary ammonium). Scan the QR code below for specific test results.

### Abrasion

Abrasion has been tested with the Wyzenbeek method using either cotton duck (CD) or wire screen (WS) as the abradant, or the Martindale method using worsted wool as the abradant. ACT guidelines require at least 30,000 Wyzenbeek double rubs or 40,000 Martindale cycles for woven upholsteries, or 50,000 Wyzenbeek double rubs for coated upholsteries in heavy duty single-shift application. Multiple factors affect fabric durability and appearance retention, including end-user application and proper maintenance. Wyzenbeek results above 100,000 double rubs have not been shown to be an indicator of increased lifespan.

### Quick Ship Program

Colors on this card are part of the Quick Ship Program. Orders up to 50 yards ship the next business day.



361 North Bernoulli Circle  
Oxnard, CA 93030  
800.446.1186 Phone  
sales@erginternational.com  
www.erginternational.com

Scan code with smartphone camera for additional resources and product information



Healthcare by Design

**DESIGNTEX**

**Ideal for healthcare or other  
high traffic/high abuse environments**

Quick Ship Program

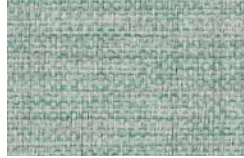
100,000 Abrasion  
Bleach Treatable  
Stain Resistant

**ERG**  
INTERNATIONAL

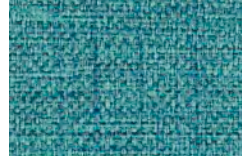




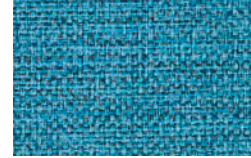
**Trove Salt Water**  
3839-104



**Patina**  
3839-401



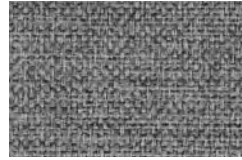
**Bayou**  
3839-402



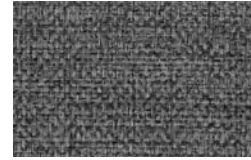
**Starlight**  
3839-403



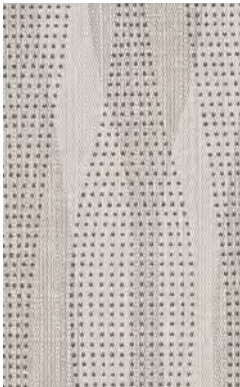
**Seraph**  
3839-102



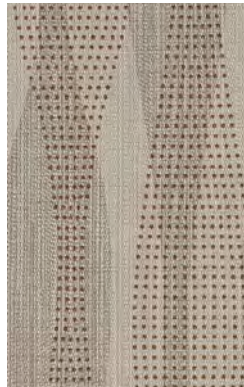
**Shadow**  
3839-801



**Charcoal**  
3839-802



**Current Mist**  
3599-801



**Seashell**  
3599-101



**Aqua**  
3599-401



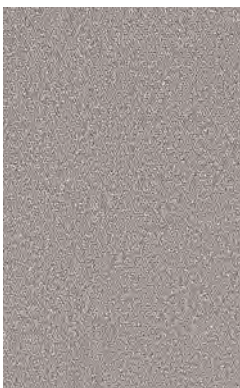
**Navy**  
3599-403



**Queue Concrete**  
3811-802



**Tidal**  
3811-401



**Luster Shield**  
3701-801



**Affinity**  
3701-804



**Arena**  
3701-102



**Lime**  
3701-501



**Lagoon**  
3701-402



**Freshwater**  
3701-403



**Plum**  
3701-601



**Cityscape**  
3701-802



**Taupe**  
3701-103



**Apple**  
3701-502



**Cove**  
3701-401



**Dive**  
3701-404

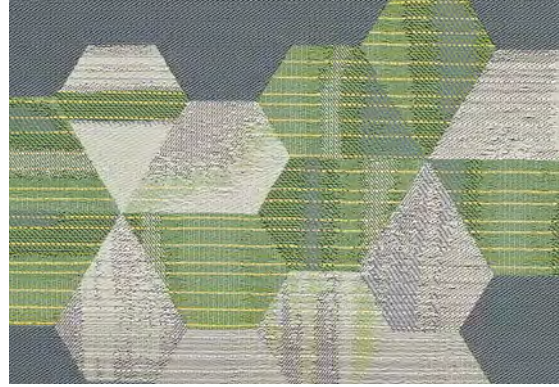


**Print**  
3701-803





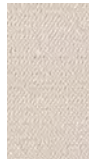
**Ink Serene**  
3773-402



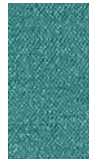
**Alloy**  
3773-801



**Rise Sky**  
3809-401



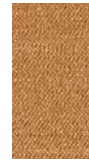
**Cloud**  
3809-802



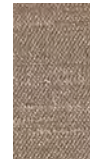
**Turquoise**  
3809-402



**True Blue**  
3809-404



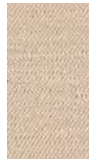
**Chamois**  
3809-201



**Nickel**  
3809-102



**Steel**  
3809-803



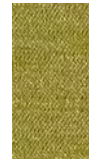
**Mica**  
3809-101



**Pool**  
3809-403



**Clematis**  
3809-601



**Chartreuse**  
3809-501



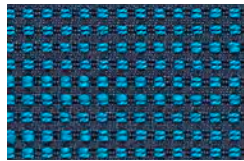
**Carob**  
3809-104



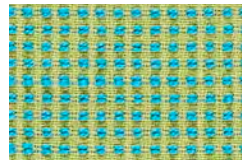
**Gunmetal**  
3809-804



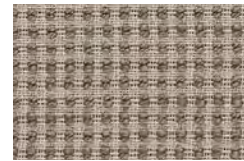
**Mark Shoji**  
3946-101



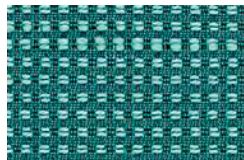
**Marea**  
3946-404



**Parakeet**  
3946-503



**Forge**  
3946-102



**Canal**  
3946-403



**Verbena**  
3946-501



**Slate**  
3946-802



**Leap Arctic**  
3600-101



**Tide Pool**  
3600-402



**Lily Pad**  
3600-502



**Steel**  
3600-801



# Healthcare by Design

Style Name	Style #	Content	Finish	Cleaning	Width	Repeat	Abrasion	Healthier Hospitals	Ink Resistant
Current	3599	100% Vinyl	Advanced Protective Topcoat	WS Bleach (10:1)	54 inches (137 cm)	V 6" x H 6.75"	100,000 Wyzenbeek double rubs (WS)		•
Ink	3773	76% Polyester, 17% Nylon (Solution Dyed), 7% Polyester (Postconsumer Recycled)	Nanotechnology Stain Resistant	WS Bleach (10:1)	56 inches (142 cm)	V 14" x H 15"	100,000 Wyzenbeek double rubs (CD)		
Leap	3600	100% Vinyl	Advanced Protective Topcoat	WS Bleach (10:1)	54 inches (137 cm)	V 9" x H 6.75"	100,000 Wyzenbeek double rubs (WS)		•
Luster	3701	100% Polyurethane (Polycarbonate Based)	Advanced Protective Topcoat	WS Bleach (4:1)	54 inches (137 cm)	None	100,000 Wyzenbeek double rubs (WS)	•	•
Mark	3946	78% Polyester, 22% Nylon (Solution Dyed)	Nanotechnology Stain Resistant	WS Bleach (10:1)	57 inches (145 cm)	None	100,000 Wyzenbeek double rubs (CD)		
Queue	3811	81% Polyester, 19% Nylon (Solution Dyed)	Nanotechnology Stain Resistant	WS Bleach (10:1)	57 inches (145 cm)	V 8.75" x H 14.75"	100,000 Wyzenbeek double rubs (CD)		
Rise	3809	100% Vinyl	Advanced Protective Topcoat	WS Bleach (10:1)	54 inches (137 cm)	None	100,000 Wyzenbeek double rubs (WS)		
Trove	3839	100% Vinyl	Advanced Protective Topcoat	WS Bleach (10:1)	54 inches (137 cm)	None	100,000 Wyzenbeek double rubs (CD)		

Meets or exceeds these ACT performance standards:



Additional colorways available  
For samples please call 800.221.1540

#### Advanced Protective Topcoat

Advanced Protective Topcoat is a PFOA-free, stain-resistant high-performance topcoat intended for all environments, including extreme-condition installations such as hospitality, healthcare, and education. This topcoat provides easier maintenance for the coated upholstery.

#### Nanotechnology Stain Resistant Finish

A stain resistant finish that, thanks to the light-weight nature of nanotechnology, preserves a fabric's feel. The finish also allows any bleach-treatable fabric to remain bleach cleanable. Ask your representative about our nanotechnology stain resistant finish providers.

#### Cleaning Codes

**Bleach** Treatable with a 4:1 or 10:1 water-to-bleach dilution for the lifetime of the product.

**WS** Clean only with water-based or solvent-based cleaner. Do not saturate.

For regular maintenance of coated fabrics, always rinse the cleaned and/or disinfected area(s) with fresh water. Wipe dry and repeat if necessary.

#### Bleach and Disinfectant Testing

All products have been tested with bleach (sodium hypochlorite) and/or a variety of disinfectants (alcohol, hydrogen peroxide, quaternary ammonium). Scan the QR code below for specific test results.

#### Abrasion

Abrasion has been tested with the Wyzenbeek method using either cotton duck (CD) or wire screen (WS) as the abrasant, or the Martindale method using worsted wool as the abrasant. ACT guidelines require at least 30,000 Wyzenbeek double rubs or 40,000 Martindale cycles for woven upholsteries, or 50,000 Wyzenbeek double rubs for coated upholsteries in heavy duty single-shift application. Multiple factors affect fabric durability and appearance retention, including end-user application and proper maintenance. Wyzenbeek results above 100,000 double rubs have not been shown to be an indicator of increased lifespan.

#### Quick Ship Program

Colors on this card are part of the Quick Ship Program. Orders up to 50 yards ship the next business day.



361 North Bernoulli Circle  
Oxnard, CA 93030  
800.446.1186 Phone  
sales@erginternational.com  
www.erginternational.com

Scan code with smartphone camera for additional resources and product information



# Healthier Hospitals by Design 1.0

**DESIGNTEX**

**Ideal for healthcare and other high abuse environments following these guidelines**

Quick Ship Program

100,000+ Abrasion

Bleach Cleanable

Compatible with Disinfectants

No Antimicrobials

No Flame Retardants

No Formaldehyde

No PFAS Stain Resistant Finishes

No PVC

**ERG**  
INTERNATIONAL

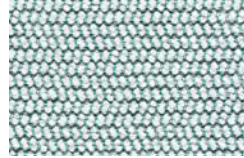




**Pause Canvas**  
3854-101



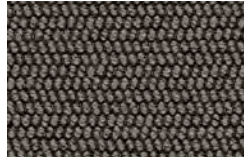
**Greige**  
3854-102



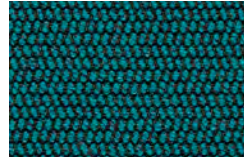
**Whitewater**  
3854-401



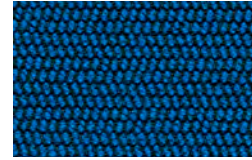
**Kelp**  
3854-501



**Forge**  
3854-801



**Turquoise**  
3854-403



**Cobalt**  
3854-404



**Dapple Shoji**  
3937-103



**Pewter**  
3937-802



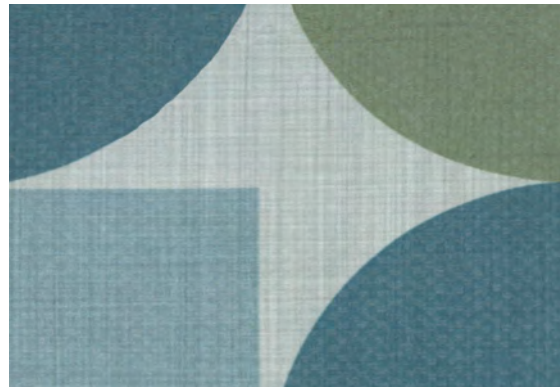
**Canal**  
3937-403



**Indigo**  
3937-405



**Sail Cocoon**  
3909-101



**Canal**  
3909-401



**Linnen Seraph**  
3921-802



**Malt**  
3921-803



**Bisque**  
3921-105



**Olive**  
3921-502



**Geyser**  
3921-401



**Salt Water**  
3921-404



**Stone**  
3921-804



**Seedling**  
3921-103



**Sundown**  
3921-701



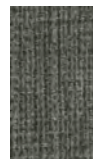
**Wasabi**  
3921-501



**Neptune**  
3921-403

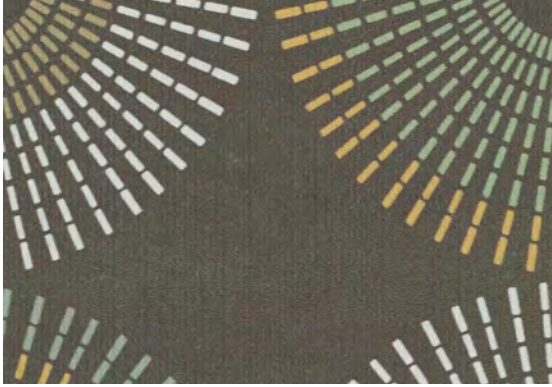


**Oceania**  
3921-406



**Charcoal**  
3921-805





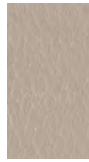
**Lumi Marsh**  
3901-102



**Forge**  
3901-802



**Silicone Element Mortar**  
3919-102



**Skyscraper**  
3919-104



**Chamomile**  
3919-202



**Apple**  
3919-502



**Isle**  
3919-403



**Slate**  
3919-406



**Saville**  
3919-808



**Alloy**  
3919-108



**Latte**  
3919-105



**Seastone**  
3919-806



**Azure**  
3919-404



**Amazon**  
3919-411



**Rolling Stone**  
3919-807



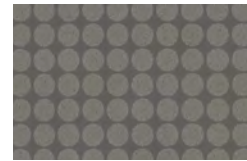
**Big Dot Moon**  
3525-801



**Sable**  
3525-101



**Lake**  
3525-401



**Smoke**  
3525-803



**Cactus**  
3525-501



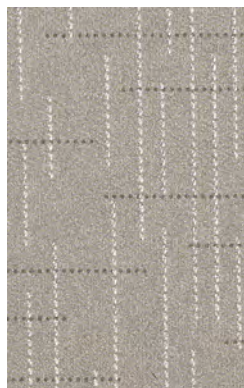
**Azure**  
3525-402



**Indigo**  
3525-403



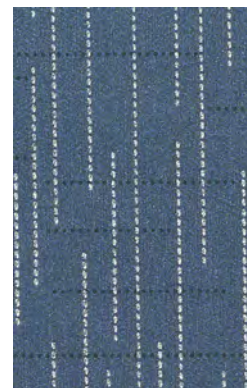
**Rainwater Sandstone**  
3837-101



**Nickel**  
3837-801

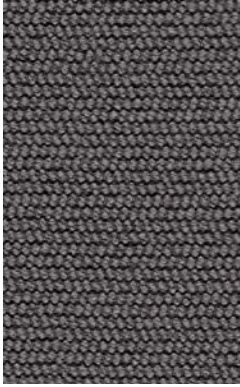


**Polaris**  
3837-401



**Indigo**  
3837-403





**Pause Stone**  
3854-802



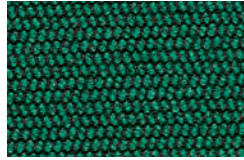
**Charcoal**  
3854-803



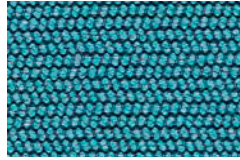
**Heat**  
3854-302



**Satsuma**  
3854-701



**Mallard**  
3854-502



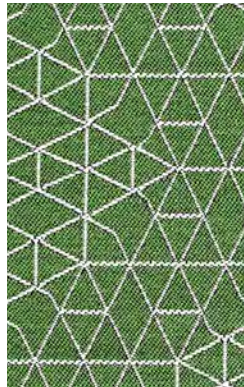
**Pool**  
3854-402



**Glow**  
3854-201



**Net Print**  
3869-803



**Topiary**  
3869-501



**Blueprint**  
3869-402



**Blaze**  
3869-301



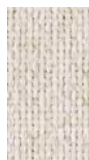
**Sail Blueprint**  
3909-402



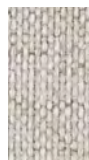
**Colorwheel**  
3909-901



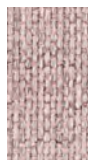
**Everywhere Texture Steel**  
4147-803



**Cream**  
4147-101



**Shell**  
4147-102



**Sweet**  
4147-301



**Yellow**  
4147-201



**Tangerine**  
4147-702



**Red**  
4147-303



**Smoke**  
4147-804



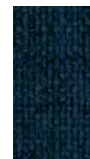
**Lime**  
4147-507



**Turf**  
4147-508



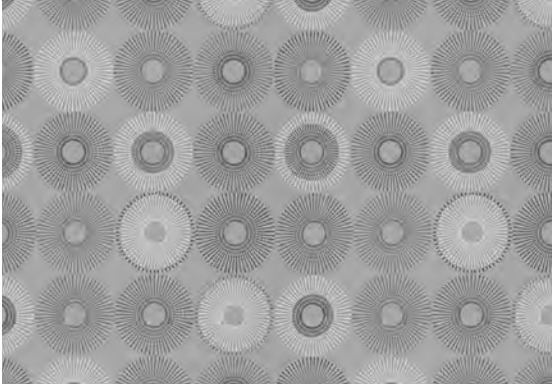
**True Blue**  
4147-410



**Nite**  
4147-412

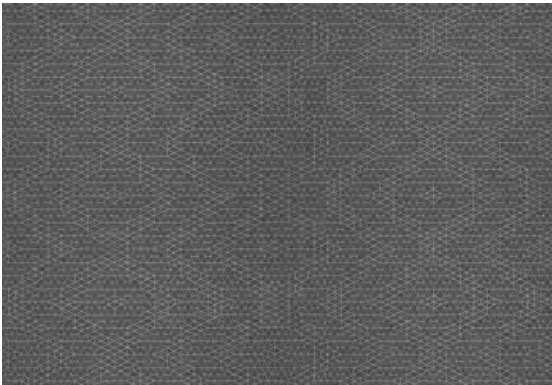


**Carbon**  
4147-806



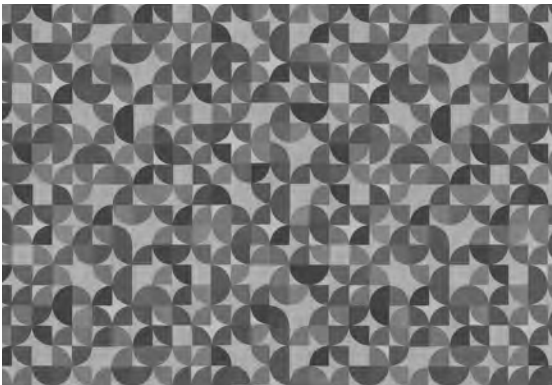
**Lumi 3901**

Repeat: V 13 inches × H 6.5 inches (V 33 cm × H 16.5 cm)



**Net 3869**

Repeat: V 9.25 inches × H 28 inches (V 23.5 cm × H 71.1 cm)



**Sail 3909**

Repeat: V 26.75 inches × H 26.25 inches (V 67.9 cm × H 66.7 cm)



# Healthier Hospitals by Design 1.0

Style Name	Style #	Content	Finish	Cleaning	Width	Repeat	Abrasion	Healthier Hospitals	Ink Resistant
Big Dot	3525	100% Polyurethane (Polycarbonate Based)	Advanced Protective Topcoat	WS Bleach (4:1)	54 inches (137 cm)	None	100,000 Wyzenbeek double rubs (WS)	•	•
Dapple	3937	100% Polyester	None	WS Bleach (10:1)	56 inches (142 cm)	None	100,000 Wyzenbeek double rubs (CD)	•	
Everywhere Texture	4147	100% Polyester	None	WS Bleach (4:1)	55 inches (140 cm)	None	100,000 Martindale cycles	•	
Linnen	3921	100% Polyurethane (Polycarbonate Based)	Advanced Protective Topcoat	WS Bleach (4:1)	54 inches (137 cm)	None	500,000 Wyzenbeek double rubs (CD)	•	•
Lumi	3901	100% Polyurethane (Polycarbonate Based)	Advanced Protective Topcoat	WS Bleach (10:1)	54 inches (137 cm)	V 13" x H 6.5"	800,000 Wyzenbeek double rubs (CD)	•	•
Net	3869	74% Polyester, 26% Acrylic	None	WS Bleach (10:1)	56 inches (142 cm)	V 9.25" x H 28"	100,000 Wyzenbeek double rubs (CD)	•	
Pause	3854	100% Polyester (Postconsumer Recycled, Solution Dyed)	None	WS Bleach (10:1)	54 inches (137 cm)	None	200,000 Wyzenbeek double rubs (CD)	•	
Rainwater	3837	100% Polyurethane (Polycarbonate Based)	Advanced Protective Topcoat	WS Bleach (4:1)	54 inches (137 cm)	None	100,000 Wyzenbeek double rubs (WS)	•	•
Sail	3909	100% Polyurethane (Polycarbonate Based)	Advanced Protective Topcoat	WS Bleach (10:1)	54 inches (137 cm)	V 26.75" x H 26.25"	800,000 Wyzenbeek double rubs (CD)	•	•
Silicone Element	3919	100% Silicone	None	WS Bleach (4:1)	55 inches (140 cm)	None	200,000 Wyzenbeek double rubs (WS)	•	•

Meets or exceeds these ACT performance standards:



Additional colorways available  
For samples please call 800.221.1540

#### Advanced Protective Topcoat

Advanced Protective Topcoat is a PFOA-free, stain-resistant high-performance topcoat intended for all environments, including extreme-condition installations such as hospitality, healthcare, and education. This topcoat provides easier maintenance for the coated upholstery.

#### Cleaning Codes

**BC** Bleach cleanable with a 4:1 or 10:1 water-to-bleach dilution for the lifetime of the product.

**WS** Clean only with water-based or solvent-based cleaner. Do not saturate.

For regular maintenance of coated fabrics, always rinse the cleaned and/or disinfected area(s) with fresh water. Wipe dry and repeat if necessary.

#### Bleach and Disinfectant Testing

All products have been tested with bleach (sodium hypochlorite) and/or a variety of disinfectants (alcohol, hydrogen peroxide, quaternary ammonium). Scan the QR code below for specific test results.

#### Abrasion

Abrasion has been tested with the Wyzenbeek method using either cotton duck (CD) or wire screen (WS) as the abrasant, or the Martindale method using worsted wool as the abrasant. ACT guidelines require at least 30,000 Wyzenbeek double rubs or 40,000 Martindale cycles for woven upholsteries, or 50,000 Wyzenbeek double rubs for coated upholsteries in heavy duty single-shift application. Multiple factors affect fabric durability and appearance retention, including end-user application and proper maintenance. Wyzenbeek results above 100,000 double rubs have not been shown to be an indicator of increased lifespan.

#### Quick Ship Program

Colors on this card are part of the Quick Ship Program. Orders up to 50 yards ship the next business day.



361 North Bernoulli Circle  
Oxnard, CA 93030  
800.446.1186 Phone  
sales@erginternational.com  
www.erginternational.com

Scan code with smartphone camera for additional resources and product information

