

GEOMETRA UPHOLSTERED W/TABLE TOPS

Geometra Upholstered Tables feature fully upholstered sides with laminate table tops standard. Available in shapes of circles, squares and triangles.



GEOMETRA SQUARE



GEOMETRA ROUND

ORDERING INFORMATION

- | | |
|--|----------------------------------|
| 1) Series Name | 6) Table Top Material and Finish |
| 2) Model Number | 7) 3MM Edge Selection |
| 3) Quantity | 8) Optional Items |
| 4) Fabric Grade and Number | |
| 5) Contrasting Fabric Grade and Number | |

GEOMETRA TABLE SPECIFICATIONS

Table Top

Table core is CARB Phase I & Phase II Compliant. Laminate, wood veneer and phenolic backing are glued with water based adhesives.

ERG offers over 1000 standard laminate choices from Nevamar, Wilsonart, Formica and Pionite with 3MM PVC edge.

Wood veneer, solid surface, 3form Chroma and stone table tops will be quoted upon request.

Frame

Frame assembly is constructed of solid and multi-ply hardwood milled on 4 sides to 1" thickness.

Glides

Tables come with factory installed, 2" nylon glides in black. Optional metal and wood legs are available.

Upholstery

Geometra can be upholstered in choice of fabric, vinyl, crypton, leather or Customers Own Material. Foam is bonded to all sides of hardwood frame. Two fabric design is available in square and circle occasional tables and three fabric design is available for triangular occasional tables.

NOTE: all adhesives used in ERG manufacturing are water based, non-toxic and 100% environmentally friendly.

SOFT SEATING	WEIGHT LIMIT
1 Seat	500 lbs.

OPTIONS

- CODE: FR - CAL 133 (TB 133) Fire Retardant - per yard
- CODE: WOD - Maple Wood Legs
- CODE: ML - Metal Legs
- CODE: 2FO - Two Fabric Option
- CODE: 3FO - Three Fabric Option
- CODE: SST - Solid Surface top
- CODE: E3A - Edge 3A 3MM PVC Woodtone
- CODE: E4B - Edge 4B Multi-Ply Wood Exposed Core
- TABLE ACCESSORIES - Wire Management, Power & Communication Options - See accessories online under 'Products' tab.

Note: Factory installed power/data available, See accessories online under 'Products' tab.



MAPLE WOOD LEGS



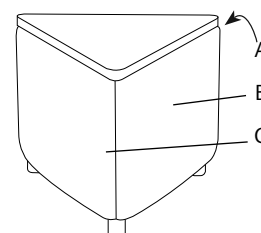
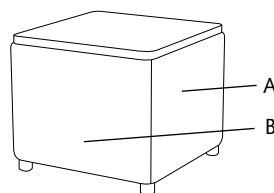
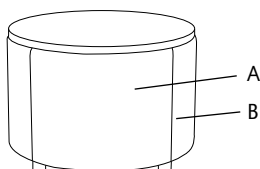
ELECTRICAL / DATA

TWO & THREE FABRIC DESIGN

Due to the geometric design options it is necessary to **include with your order a sketch/layout** to specify which fabric is to be used on each area of the Geometra. Use the callouts shown below to define fabric areas in your sketch.

Laminate Top Note:

Table tops are 3/4" laminate with multi-ply edge



Three Fabric Design for the triangle shape only

DIMENSIONS	Circle Table	Triangle Table	Square Table
Overall Depth:	24", 30", 36"	29"	24", 29"
Overall Width:	24", 30", 36"	29"	24", 29"
Overall Height:	18"	18"	18"
Qty./Wt.:	1 ea./39 lbs.	1 ea./45 lbs.	1 ea./65 lbs.



SQUARE GEOMETRA WITH LAMINATE TOP

Laminate Top Note:

- Tops are 3/4" laminate
- Std with 2B 3mm solid PVC
- Upcharge for these edges
 - 3A - 3mm Woodtone
 - 4B - Multi-Exposed core

MODEL / DESCRIPTION / LIST PRICING



580 24" Circle Table with Laminate Top (4 legs) COM Yardage: 1.5 Yds.

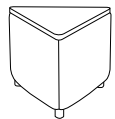
COM	GR1	GR2	GR3	GR4	GR5	GR6	GR7	GR8	GR9	GR10	LEA
\$1922	\$2057	\$2139	\$2224	\$2314	\$2405	\$2502	\$2602	\$2707	\$2816	\$2928	\$3460

582 30" Circle Table with Laminate Top (4 legs) COM Yardage: 1.75 Yds.

COM	GR1	GR2	GR3	GR4	GR5	GR6	GR7	GR8	GR9	GR10	LEA
\$2309	\$2470	\$2568	\$2671	\$2778	\$2889	\$3005	\$3125	\$3250	\$3380	\$3516	\$4155

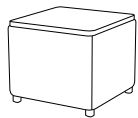
584 36" Circle Table with Laminate Top (4 legs) COM Yardage: 2.5 Yds.

COM	GR1	GR2	GR3	GR4	GR5	GR6	GR7	GR8	GR9	GR10	LEA
\$2644	\$2828	\$2940	\$3058	\$3181	\$3308	\$3441	\$3578	\$3722	\$3871	\$4026	\$4758



586 29" Triangle Table with Laminate Top (3 legs) COM Yardage: 2 Yds.

COM	GR1	GR2	GR3	GR4	GR5	GR6	GR7	GR8	GR9	GR10	LEA
\$2357	\$2522	\$2624	\$2727	\$2836	\$2951	\$3068	\$3191	\$3318	\$3450	\$3588	\$4243



588 24" Square Table with Laminate Top (4 legs) COM Yardage: 1.5 Yds.

COM	GR1	GR2	GR3	GR4	GR5	GR6	GR7	GR8	GR9	GR10	LEA
\$1882	\$2011	\$2091	\$2175	\$2264	\$2354	\$2448	\$2545	\$2647	\$2753	\$2863	\$3385

590 29" Square Table with Laminate Top (4 legs) COM Yardage: 2 Yds.

COM	GR1	GR2	GR3	GR4	GR5	GR6	GR7	GR8	GR9	GR10	LEA
\$2294	\$2454	\$2552	\$2654	\$2761	\$2872	\$2987	\$3106	\$3231	\$3359	\$3494	\$4130

OPTIONS

Add upcharge to list price and code to model number

FR	CAL 133 (TB 133) Fire Retardant - per yard	\$101	/yd.
WOD	Solid Maple Wood Legs	\$27	ea.
ML	Metal Legs	\$27	ea.
2FO	Two Fabric Option	\$110	

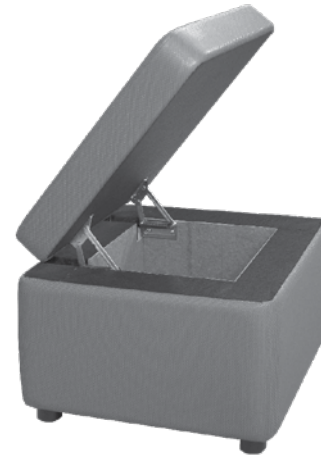
3FO	Three Fabric Option	\$166	
SST	Solid Surface top	Call	
E3A	3A PVC 3MM Woodtone Table Edge	\$90	
E4B	4B Exposed Multi-Ply Table Edge	\$164	

GEOMETRA

The Geometra decorative ottoman features seating in shapes of circles, squares and triangles. Two fabric design is standard for Geometra square and circle. Three fabrics design is standard for Geometra triangle.



36" GEOMETRA CIRCLE
WITH STANDARD 2 FABRIC DESIGN



SQUARE GEOMETRA
WITH OPTIONAL HINGED STORAGE

ORDERING INFORMATION

To Order Please Specify:

- | | |
|--------------------------------------|--|
| 1) Series Name | 6) Sketch for contrasting fabric placement |
| 2) Model Number | 7) Optional Items |
| 3) Quantity | |
| 4) Fabric Grade & Number | |
| 5) Contrasting Fabric Grade & Number | |

GEOMETRA GENERAL SPECIFICATIONS

Frame Construction

Frame assembly is constructed of multi-ply hardwood, with tongue and groove construction. No sag-springs are installed in seat along with interlocking helicoil springs to prevent sagging and provide additional seat support. Each modular unit consists of two individual components bolted together.

Upholstery

All foam is fully bonded to frame. Two fabric design is standard in square and circle ottomans and three fabric design is standard for triangle ottomans. Seat cushions are 4" graded high resiliency (H.R.) block foam, covered entirely with special bonded polyester fiber to protect final upholstery. ERG uses only water based glues and adhesives in our upholstery process. Seat and back are covered in choice of fabric, vinyl, crypton, leather or COM.

Glides

Benches come with factory installed, 2" nylon glides in black.

Warranty

ERG offers a lifetime warranty on all foam and frames.

COLORS / FINISHES

Contrasting Fabric

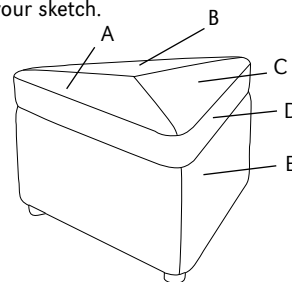
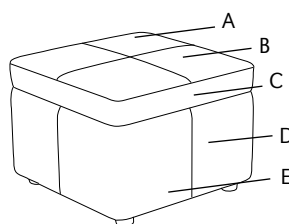
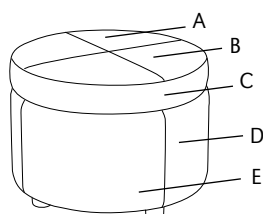
Contrasting fabric and designs are included in List Price.

OPTIONS

- CODE: FR - CAL 133 (TB 133) Fire Retardant per yard
- CODE: MB - Moisture Barrier (up to 60" overall width)
- CODE: HS - Hinged Storage
- CODE: SBH - Special Height
- CODE: WOD - Solid Maple Wood Legs
- CODE: 2FO - Two Fabric Option
- CODE: 3FO - Three Fabric Option

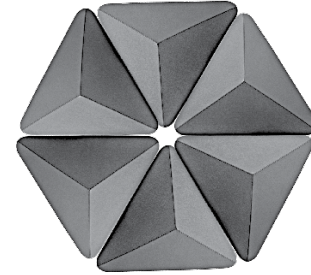
TWO & THREE FABRIC DESIGN

Due to the geometric design options it is necessary to include with your order a **sketch/layout** to specify which fabric is to be used on each area of the Geometra. Use the callouts shown below to define fabric areas in your sketch.



Three Fabric Design for the triangle shape only

DIMENSIONS	24" Circle	30" Circle	36" Circle	24" Square	29" Square	29" Side Triangle
Overall Width:	24"	30"	36"	24"	29"	29"
Overall Depth:	24"	30"	36"	24"	29"	29"
Seat Height:	18"	18"	18"	18"	18"	18"
Qty./Wt.:	1 ea./25 lbs.	1 ea./35 lbs.	1 ea./47 lbs.	1 ea./32 lbs.	1 ea./40 lbs.	1 ea./25 lbs.



SIX TRIANGLE CONFIGURATION

MODEL / DESCRIPTION / LIST PRICING

	570	Round - 24" diameter (4 legs)					COM Yardage: 2.5 Yds. / Seat: 1.5 Yds. each of two colors					
	COM	GR1	GR2	GR3	GR4	GR5	GR6	GR7	GR8	GR9	GR10	LEA
	\$1726	\$1845	\$1919	\$1997	\$2077	\$2159	\$2246	\$2335	\$2428	\$2527	\$2628	\$3106
	571	Round - 30" diameter (4 legs)					COM Yardage: 3 Yds. / Seat: 1.5 Yds. each of two colors					
	COM	GR1	GR2	GR3	GR4	GR5	GR6	GR7	GR8	GR9	GR10	LEA
	\$2079	\$2225	\$2315	\$2407	\$2503	\$2602	\$2708	\$2816	\$2928	\$3045	\$3167	\$3744
	572	Round - 36" diameter (4 legs)					COM Yardage: 4 Yds. / Seat: 2 Yds. each of two colors					
	COM	GR1	GR2	GR3	GR4	GR5	GR6	GR7	GR8	GR9	GR10	LEA
	\$2345	\$2510	\$2611	\$2715	\$2825	\$2937	\$3054	\$3177	\$3302	\$3434	\$3573	\$4222
	574	Triangle - 29" each side (3 legs)					COM Yardage: 2.5 Yds. / Seat: 1.25 Yds. each of two colors					
	COM	GR1	GR2	GR3	GR4	GR5	GR6	GR7	GR8	GR9	GR10	LEA
	\$2079	\$2225	\$2315	\$2407	\$2503	\$2602	\$2708	\$2816	\$2928	\$3045	\$3167	\$3744
	576	Square - 24" square (4 legs)					COM Yardage: 2.5 Yds. / Seat: 1.25 Yds. each of two colors					
	COM	GR1	GR2	GR3	GR4	GR5	GR6	GR7	GR8	GR9	GR10	LEA
	\$1683	\$1801	\$1873	\$1949	\$2026	\$2107	\$2193	\$2279	\$2371	\$2466	\$2564	\$3031
	578	Square - 29" square (4 legs)					COM Yardage: 3 Yds. / Seat: 1.5 Yds. each of two colors					
	COM	GR1	GR2	GR3	GR4	GR5	GR6	GR7	GR8	GR9	GR10	LEA
	\$2021	\$2161	\$2248	\$2337	\$2431	\$2530	\$2630	\$2736	\$2845	\$2960	\$3077	\$3637

OPTIONS

Add upcharge to list price and code to model number

FR	CAL 133 (TB 133) Fire Retardant - per yd.	\$101	/yd.
MB	Moisture Barrier (up to 60" overall width)	\$141	ea.
HS	Hinged Storage - per unit	\$506	
SBH	Special Height - per unit	\$332	

WOD	Solid Maple Wood Legs	\$27	ea.
2FO	Two Fabric Option	\$110	
3FO	Three Fabric Option	\$166	